

ONYX 22 Release Notes

- **Simplified Printer Installation, Backup, and Update Process.**

- Install printers from within RIP-Queue. *Image 1-A*
 - Printers created with localized names in version 21 or older must be imported into version 22 with the same operating system region and language settings.
- The printer appears automatically after downloading the driver.
- Printer driver version warning when a newer driver is available.
- The current driver versions and newest versions are listed in Printer Manager.
- *Image 1-B*
- One-click updates when newer driver versions are available. *Image 1-C*
 - Bidirectional printers will show the newest version available but must be updated outside of this application.
- Backups of printers and media profiles are created during upgrades and uninstallation. *Image 1-D*
- The New Printer dialog now links to Printer Manager. *Image 1-E*

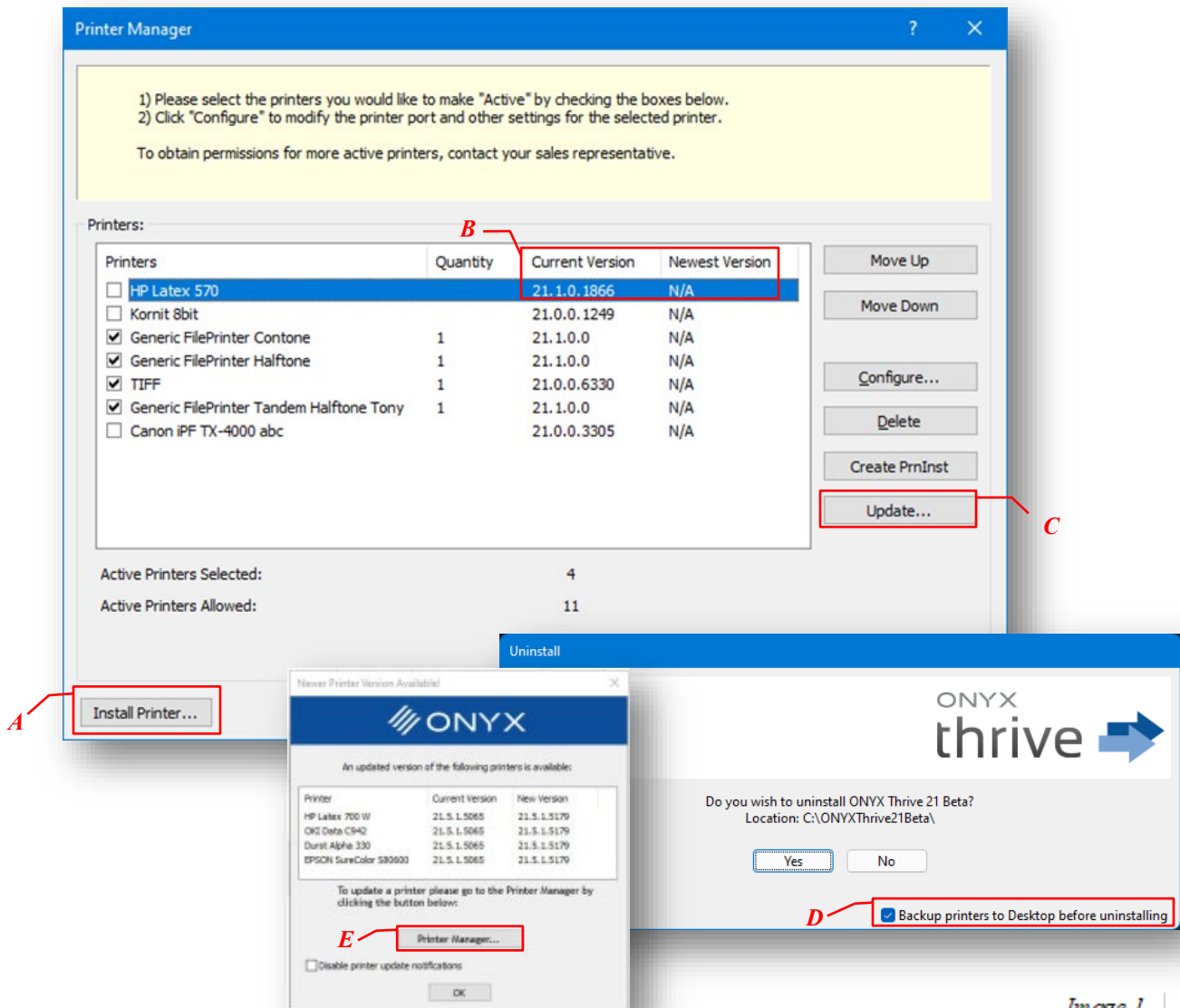


Image 1

- **Drag and Drop User Functionality in RIP-Queue**

- Image files can now be dragged from Windows File Explorer and dropped into RIP-Queue.
- After dropping files onto the queue, a settings window will be displayed that has options to apply to the image, such as Quick Sets, sizing rules, etc. *Image 2-A*
- Drag and Drop Input Tab added to Print Preview and Console Tab. A Quick Set tab has been added to the bottom-right corner of RIP Queue. A combo box allows for selecting a Quick Set for the current printer. Images can be dragged from an Explorer window and dropped onto the tab. These files will be opened with the selected Quick Set. *Image 2-B*

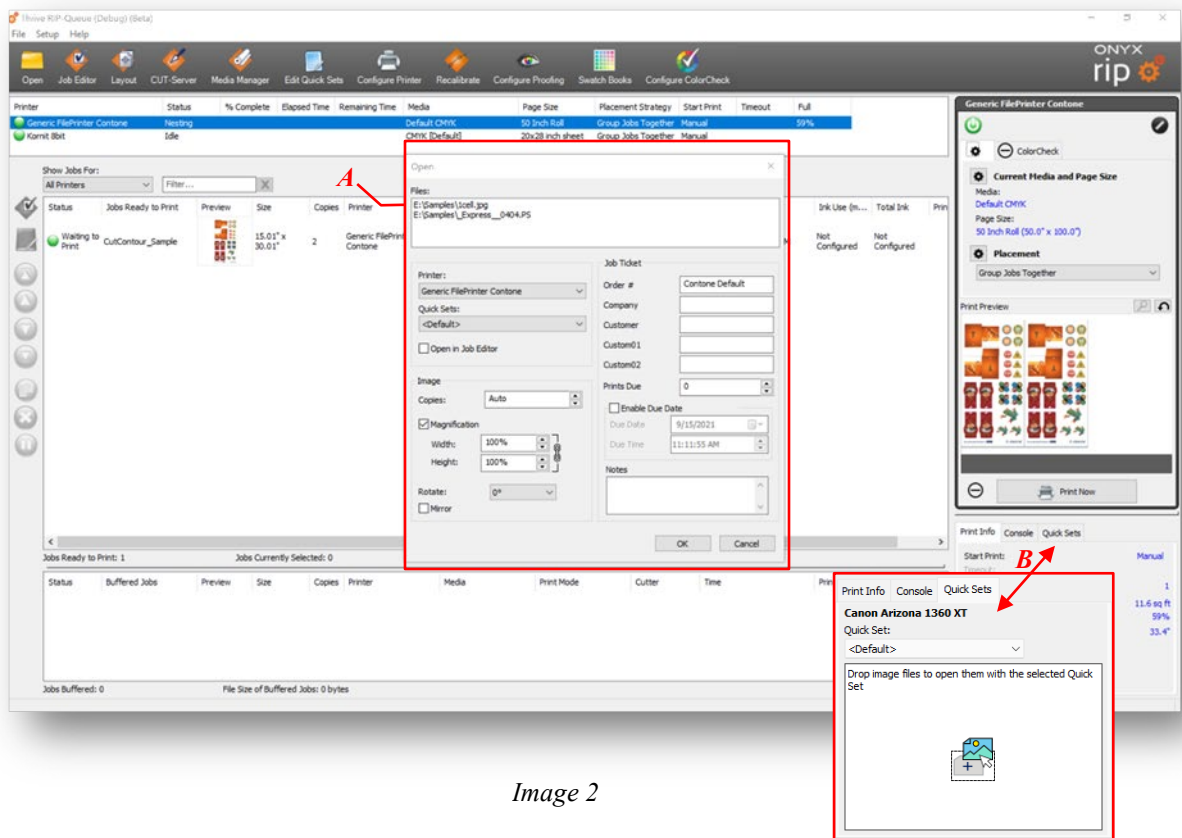
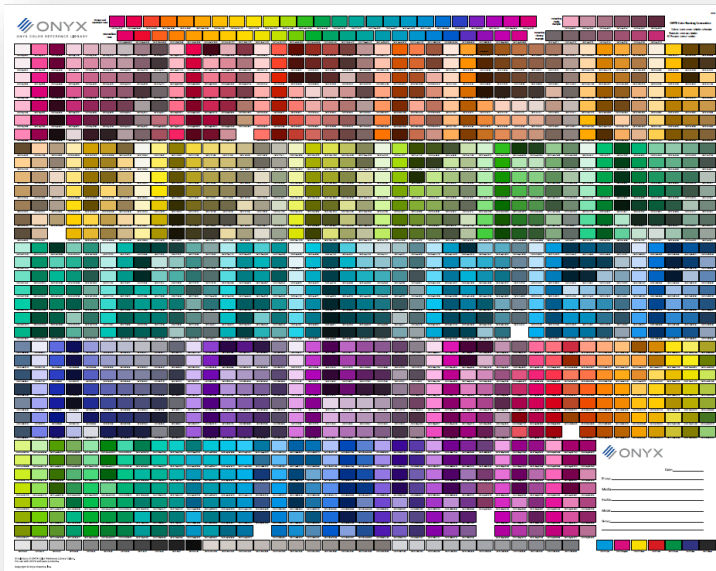


Image 2

- **ONYX Color Reference System**

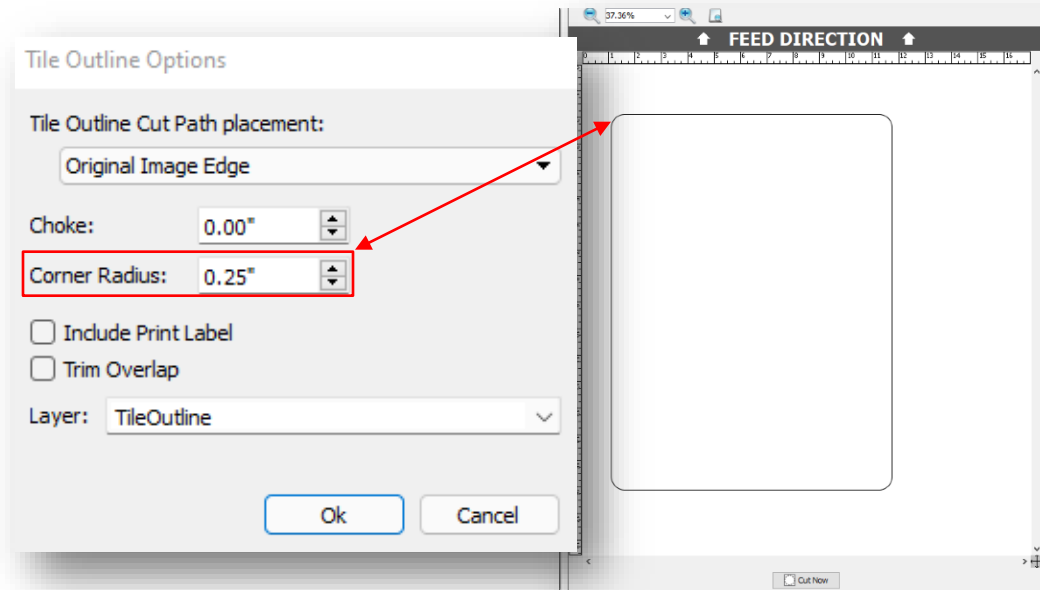
- ONYX Swatch library to assist in making color choices and setting expectations with customers.
- ASE Color Library for ADOBE Illustrator.
- XML Color Library for CorelDraw
- Poster and Booklet for printable color reference.
- Ability to print "Validated" ONYX Color Reference Library posters/booklets.
- Available in Samples Folder with PDF Guide.



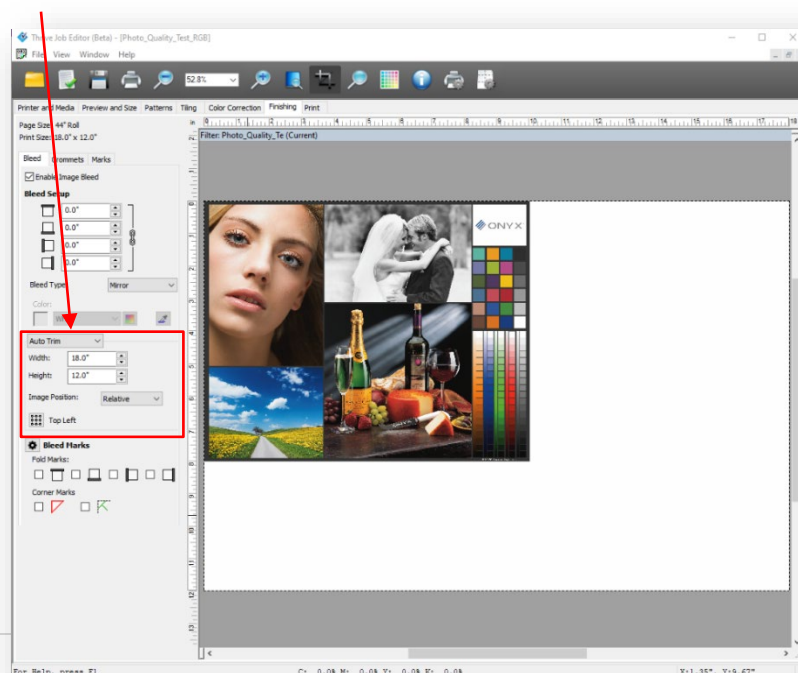
- **Smart File Name Job Submission**

- Metadata can be added to image file names. Any metadata in the file name will be applied to the job when the image is opened. Metadata in the filename has a higher priority than the Quick Set used to open the job.
- The following metadata is supported:
 - Copies (range 1 to 9999)
 - Magnification (range 1 to 10,000, in percentage)
 - Rotation (0, 90, 180, 270)
 - Order Number
 - Company Name
 - Customer Name
- Metadata in the file name begins with the string "_#JMD#_". The metadata options follow this token and are separated by semicolons. The metadata in the file name needs to follow the order listed above. If a particular item isn't required, then leave it blank.
- Examples:
 - Wine & Cheese_#JMD#_5.tif
 - This will open the file with five copies.
 - Wine & Cheese_#JMD#_5;110;90;;ABC Printing.tif

- This will open the file with five copies, 110% magnification, 90 degrees rotation, and 'ABC Printing' as the customer's name. Notice that the Order Number and Company Name are left blank.
- **Corner Radius Controls for Tile Outline Cut Path**
 - By default, tile outline cut paths are rectangles. The corners of these rectangles can now be rounded by specifying a "Corner Radius" in the Tile Outline Options dialog.

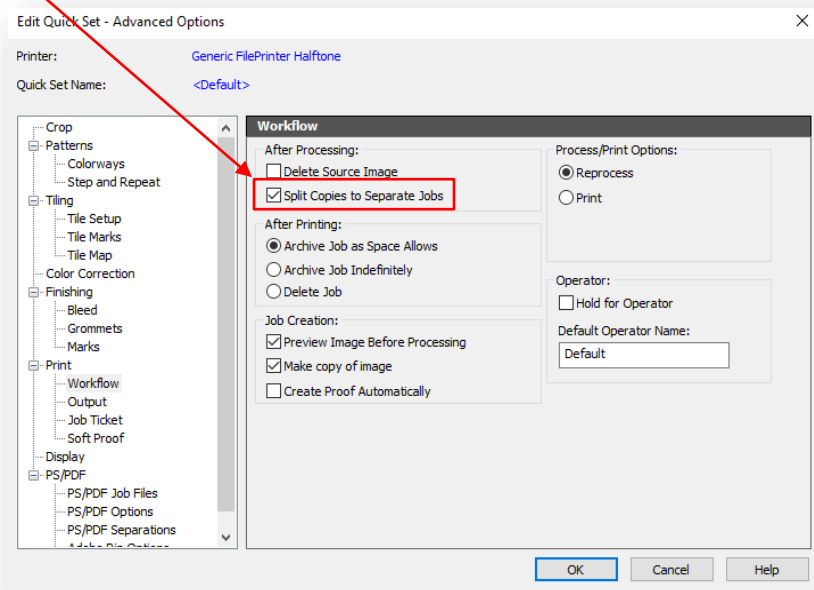


- **Enhanced tools for Nesting Control**
 - An Auto Trim feature has been added to Quick Sets, Job Properties, and Job Editor. When Bleed is enabled for a job, the trim can be specified as "Manual" (the default) or "Auto." When Auto Trim is chosen, the job width and height can be selected to create the material size (white space), and the image position can be specified. This helps place images in specific nested positions, such as when using

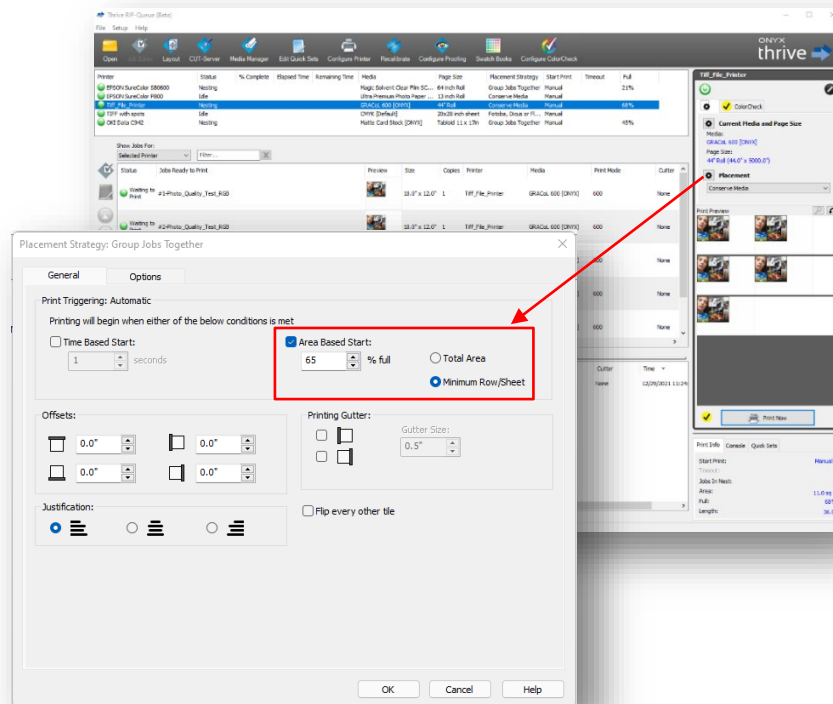


a jig.

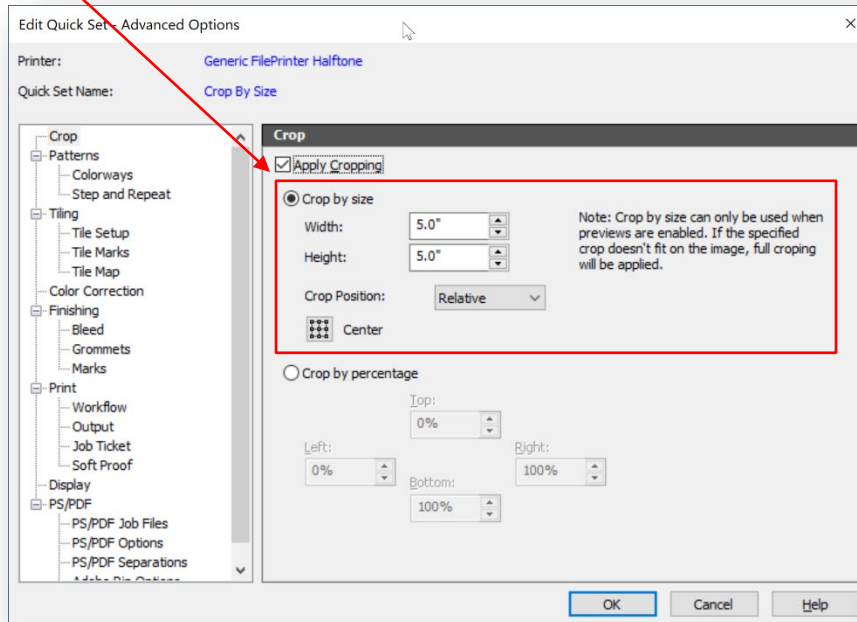
- When opening a job with multiple copies of itself, you now have the option to split that job with multiple copies into individual jobs for those copies. The option is available in Job Editor, Quick Sets, and Job Properties.



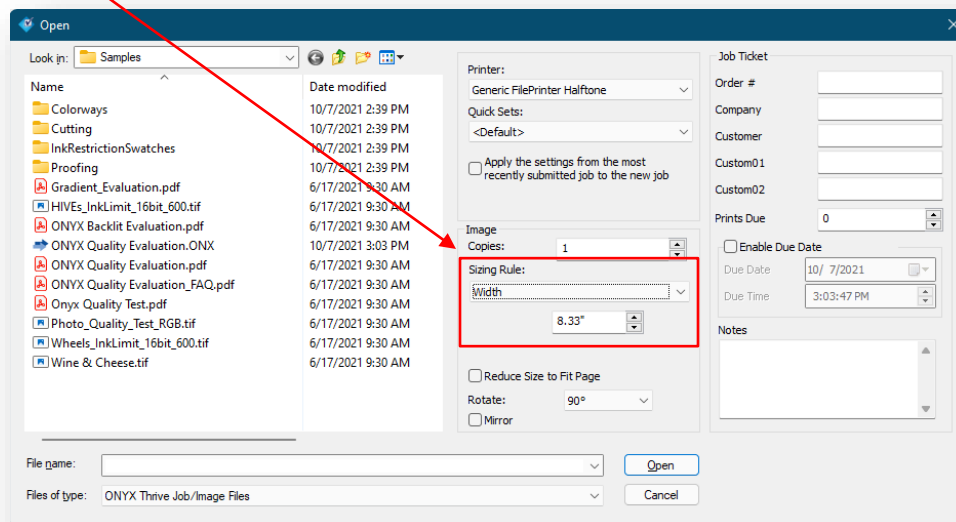
- Area-based print triggering controls for flatbed printing workflow automation. Use in combination with Split Copies to print jobs automatically based on percent full.



- Quick Set image cropping by size. Previously, cropping was done by setting the percentage of the image's top, bottom, left, and right sides to crop. Now, cropping can also be specified by setting the crop size and either an offset from the top-left corner of the image or a relative position within the image.

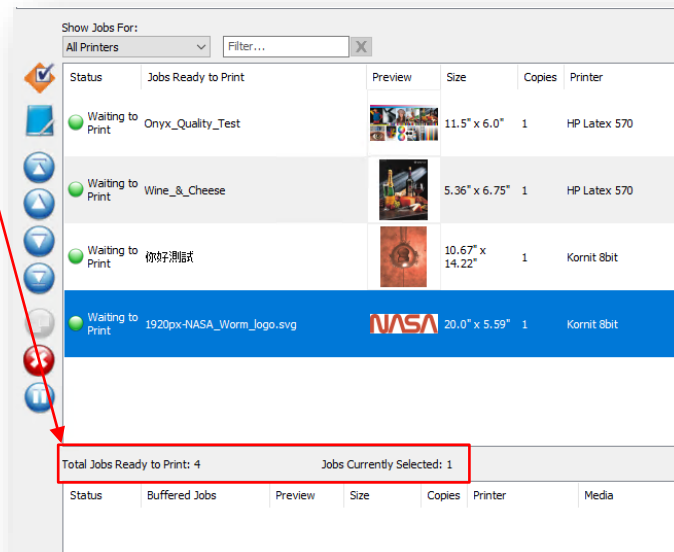


- Sizing Rules added to File Open window. Can now select from Image Size, Width, Height, Pixel Based Magnify, or Define by Quickset when opening a job in RIP-Queue or Job Editor.



- **Job Counter**

- Displays the total number of jobs ready to print for the selected queue. The number of currently selected jobs is also shown.

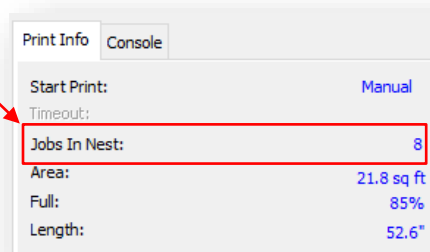


- Displays the total number of buffered jobs for the selected printer queue. The total file size of the buffered jobs is shown as well. If the file size of the buffered jobs is more than 10% of the entire disk space, then the percentage of disk space used by the buffered jobs is also displayed.

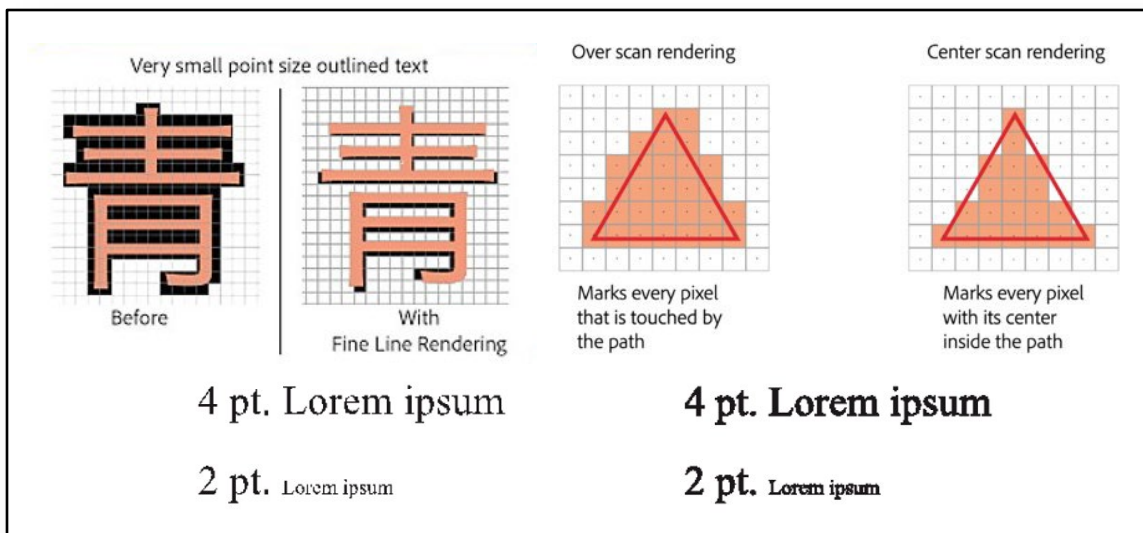
Status	Buffered Jobs	Preview	Size	Copies	Media	Print Mode	Cu...	File Size	Time
Archive	ONYX_Quality_Evaluation		87.5" x 115.0"	1	Default	720 dpi, Stochastic	None	832.5 M	8/12/2021 9:59:32 AM
Archive	ONYX_Backdit_Evaluation		96.25" x 126.5"	1	Default	720 dpi, Stochastic	None	1.0 G	8/12/2021 10:02:38 AM
Archive	ONYX_Backdit_Evaluation~1		96.25" x 126.5"	1	Default	720 dpi, Stochastic	None	1.0 G	8/12/2021 10:07:10 AM
Archive	Onyx_Quality_Test		72.0" x 138.0"	1	Default	720 dpi, Stochastic	None	889.9 M	8/12/2021 10:07:33 AM
Archive	HIVES_InkLimit_16bit_600		57.5" x 130.0"	1	Default	720 dpi, Stochastic	None	615.9 M	8/12/2021 10:10:42 AM
Archive	ONYX_Backdit_Evaluation~2		105.0" x 138.0"	1	Default	720 dpi, Stochastic	None	1.2 G	8/12/2021 10:14:31 AM
Archive	Wine_&_Cheese		85.8" x 108.08"	1	Default	720 dpi, Stochastic	None	1.6 G	8/12/2021 10:17:02 AM
Archive	Wheels_InkLimit_16bit_600		74.75" x 169.0"	1	Default	720 dpi, Stochastic	None	662.7 M	8/12/2021 10:18:19 AM
Archive	테스트_파일		87.5" x 115.0"	1	Default	720 dpi, Stochastic	None	876.1 M	8/12/2021 10:19:05 AM

Summary: Jobs Buffered: 9, File Size of Buffered Jobs: 8.5 G, Disk Space Used by Buffered Jobs: 11.61%

- Displays the count of jobs in the nest for the currently selected printer.



- **G7 Calibration Without Profiling**
 - Just as in Media Manager, an iterative G7 correction curve can be applied through ColorCheck if a G7 P2P swatch is printed and measured with no color management (the G7 Grayscale workflow).
 - An Apply Update button will be visible in the initial report after measuring the swatch. Clicking the button will apply an iterative G7 calibration curve to the mode.
 - A "G7 Correction Check" swatch is now installed and can be used to check how well the calibration/correction achieved the G7 aims.
- **D65 Light Source Measuring for Textile Printing**
 - When building or editing an ICC profile in media manager, profiles can now be created using a D65 illuminant with the Standard 10-degree observer by selecting the option in the Build Options window for ICC profiles.
 - Color Management according to textile industry standards.
- **APPE Update**
 - Using the latest Adobe PDF Print Engine - APPE 5.7.
 - Fine line rendering for a lighter and cleaner appearance.
 - Greater clarity of small point size text that has been outlined.



- **Additional Updates**
 - C:// default install location with the option to choose an alternate location.
 - Unique ICC profile name.
 - Fotoba updates. Improvements were made for length adjustment and better alignment. XLA Barcodes are no longer included with resolution adjustments.
 - Rip Queue Shut Down warning only shows when jobs are processing or printing.
 - The print mode is added to the printed job log.
 - The database default port value can now be changed in the General Settings dialog.
 - When generating a soft proof from a multi-page PDF, the option to soft

- proof all the pages in that multi-page PDF is now available.
 - Base linearization and calibration process added for existing CMYK contone modes.
 - Custom color controls for Grommets. The default color is white.
 - RIP-Queue's General Settings dialog UI has been updated to make it more consistent with other settings dialogs.
 - Changes to underlying architecture to allow for better flexibility and easier maintenance. Now allows for configuring printers without shutting everything down and for “printing as groups.”
- **New color devices.**
 - MYIRO-1 With Wi-Fi Connectivity Support. Updated information on how to set up WiFi Support has been added. Port options are not required for this device.
 - Barbieri Spectro LFPqb Textile Edition

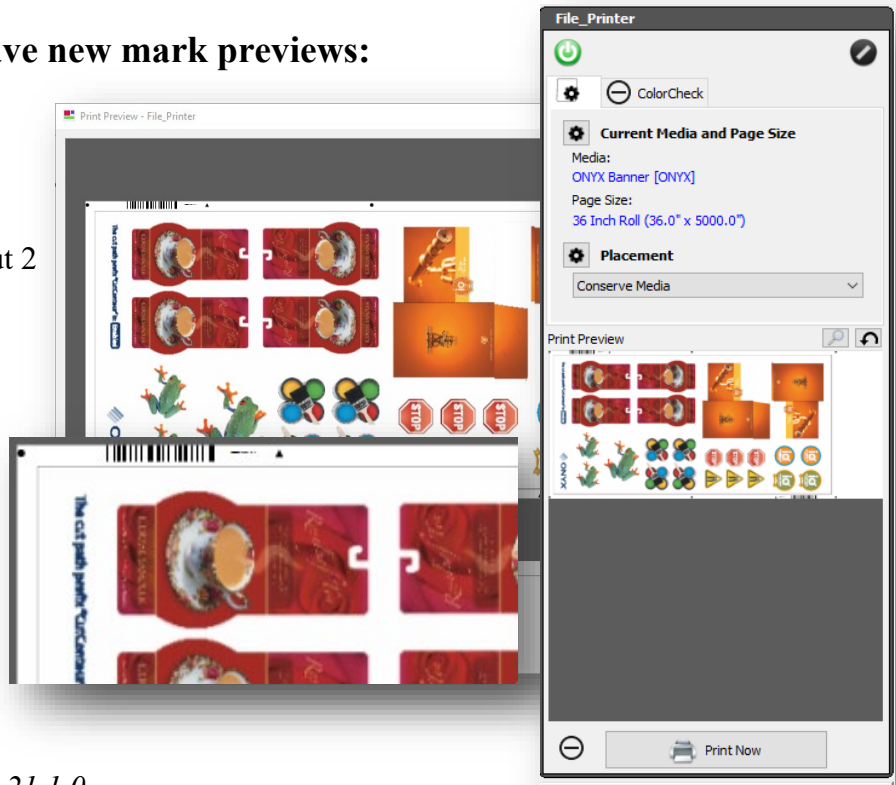
Hub 3.0 Release Notes

- Cleanup timestamps and times to be consistent and contain units/offsets.
- New Asynchronous HTTP/2 (Spring Webflux) endpoints for better scalability/performance.
- New MongoDB for Asynchronous retrieval and processing of reports and image previews/sources.
- Extended Job submission functionality with Clone support.
- Added Swagger Documentation to describe the endpoints within the code.
- Support for additional Sync vendor codes added to RMS.
- Improved search capability—reports field of match found. (jobName, orderNum)
- Upgraded to Angular 13
 - Modern Web Development Framework. (Typescript/Javascript/CSS)
 - NgRx/Store pattern for Page state storage and caching of previous requests.
 - Faster switching between pages with no switching back to a page with a blank view that must be loaded from a previously retrieved source.
 - Enhanced Responsiveness with Observable pattern connected via Store.
- Controller/Hub enhancements
 - New Demo mode option that generates based on a ‘seed’ local Thrive.
 - Speed improvements to startup and shutdown times.
 - Speed improvements of database restore and conversion.
 - RMS License support can easily use a license between Thrive and Hub.
- Beta Feedback Fixes
 - PDP API - Initial server populate speed improvements. (Previews)
 - HUB Calculations - German OS with Thrive generates ppr with invalid media waste.
- Incorporated new Hub 3.0 Translations.
- Resolved Spring4Shell Vulnerability.
- New supported types of Job Submissions through PDP. (PrintForward, SplitTileCopies, Splitcopies, MoveJobs)

Cutter Release Notes: Onyx 22

The following cutters have new mark previews:

- i-Cut
- MultiCam
- ZCC
- Eurosystems OptiScout 2
- Colex Sharpcut Pro
- Mimaki ID Cut Series
- HP Latex Plus
- Summa S One
- Summa S2
- Graphtec F9000
- Graphtec CE7000



Changes/Fixes Inclusive from 21.1.0
post 21.1.1 noted modifications in [blue](#).

COLEX:

SHARPCUT PRO

- [New cutter devices added](#)
- [Added Print Preview Cutter Marks in Rip-Queue](#)

EUROSYSTEMS:

OPTISCOUT

- Renamed OptiSCOUT cutter to "Eurosystems OptiScout" cutter
- [Correction to XML output formatting](#)
- [Corrections to adjustment of Horizontal Registration Mark placement](#)
- [Fixed device name capitalization error in Cut-Server/Layout Tool](#)
- [Corrections to job output XML formatting restricting the use of invalid characters](#)

OPTISCOUT 2

- New cutter device Added
 - Added Material Match functionality for Cut-Direct jobs
 - Added Support for the cutter in Layout Tool
 - [Added Print Preview Cutter Marks in Rip-Queue](#)
 - [QR Code Rotated 180 Degrees to suit controller workflows](#)
 - [When using barcodes, cut rotation options are disabled.](#)

- When switching barcodes, related settings will change automatically
- Added adjustable QR code sizes to suit device controller workflows
- Generation of QR codes was enhanced to work with non-square print resolutions
- Fixed Adjustment application of Horizontal Registration marks
- Fixed issue with driver sending only the last Material Match used
- Added Print Preview Cutter Marks in Rip-Queue

Generic DXF:

- Updated default output parameters

GRAPHTEC:

FC9000/CE7000 Series

- Drivers were optimized for accuracy of Intermediate mark detection using Data-Link
- Fixed UI for Roll Media selections, which now show correct options available
- Removed intermediate mark options for Roll Server - Pattern 1 due to accuracy issues.
 - Horizontal/Vertical/Both intermediate marks are an option with Roll Server - Pattern 2
- Removed segmentation correction option from CE7000, which this model does not support
- Added Cutter Device Option for generation of Large Barcodes in associated cut jobs.
- Added Connection Status (Stop Light) indicator for TCP/IP device connections in Cut-Server.
- Adjustments to Roll-Server connectivity to mitigate timeout conditions when using Device-Link.
- Added Print Preview Cutter Marks in Rip-Queue

I-CUT Vision:

- Fixed issue with Margin Settings adjustments / reset to default values
- Changed "I-Cut" cutter instance name to "i-cut Vision" *
- Updated I-Cut Marks and Barcode - added Direction Mark cutter option, correcting non-barcode workflows
- Updated No Barcode, with Text and Direction mark corrections *
- Added Print Preview Cutter Marks in Rip-Queue

MIMAKI:

CG FX Series

- Added "use device setting" option for cutter settings

ID_Cut Series Devices

- Introduction of ID_CUT barcodes on all sides to correlate with corner registration marks (Type1)
- Support for ID_CUT workflows on these Print/Cut devices: *CJV300plus*, *CJV330*, and *UCJV150/300*
- Support for ID_CUT workflows on these Cut-Only devices: *CF22*, *CG-FXII Plus*, *CG-AR*
- New MimakiTCP connection option has been added
- Added drivers to Layout Tool (Direct Cut only, No barcodes)
- Added Print Preview Cutter Marks in Rip-Queue

MULTICAM:

- Fixes for consistency of measurement unit used in output cut file.
- Added Print Preview Cutter Marks in Rip-Queue

PROTEK:

- Adjustments to the generation of Intermediate Registration Marks for Left/Right side placement

ROLAND:

VG / SG Series

- Correction of cutter device name in Cut-Server selection list
- Adjustments for correct second mark detection

RUK:

RUK

- New cutter device added

HP Latex Cutter Plus:

- Added Print Preview Cutter Marks in Rip-Queue
- Adjusted Cutter Mark sizes to prevent distortion of barcode with non-square resolution print modes **

SUMMA:

S2/S-One Series

- Added Supporting libraries for Summa S2 functionality
- Adjusted Y margin minimum value to correct value range
- Added Print Preview Cutter Marks in Rip-Queue **

F Series

- Adjustment of Intermediate Mark placement to suit Summa GoProduce workflows

VIVID:

VeloBlade

- New cutter device added

ZUND:

Touch & Cut

- Adjustments to Cut Job output for additional accuracy and registration mark detection

Zund Cut Center

- Added Print Preview Cutter Marks in Rip-Queue

New Devices:

COLEX

SharpCut Pro

EUROSYSTEMS Optiscout 2

ROLAND GR2 Series

RUK RUK

VIVID VeloBlade

Mimaki UCJV300

Mimaki CJV300 Plus

Mimaki ID Cut* Mimaki CJV330

Mimaki CF22

Mimaki CGFXII Plus

Mimaki CG-AR

Updated 6/09/22