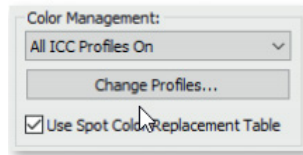




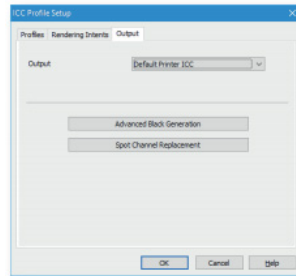
Color logic Setup using ONYX

How to map the Color-Logic spot separation (CL 4713 SILVER) to a spot ink channel in ONYX Thrive and ONYX RIP Software.

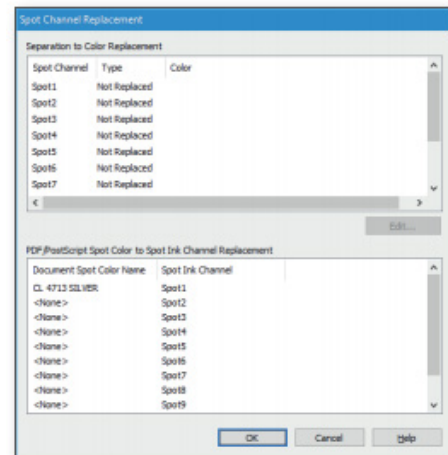
Step 1. In Job Editor, select the Printer and Media Tab, and click “Change Profiles...” button in the Color Management section.



Step 2. In the “ICC Profile Setup” window, click on the Output tab, and then the Spot Channel Replacement button.



Step 3. In the “PDF/PostScript Spot Color to Spot Ink Channel Replacement” section, click in the left column, and enter the spot separation name from your file that you want to map (CL 4713 SILVER) to a spot channel on the printer.

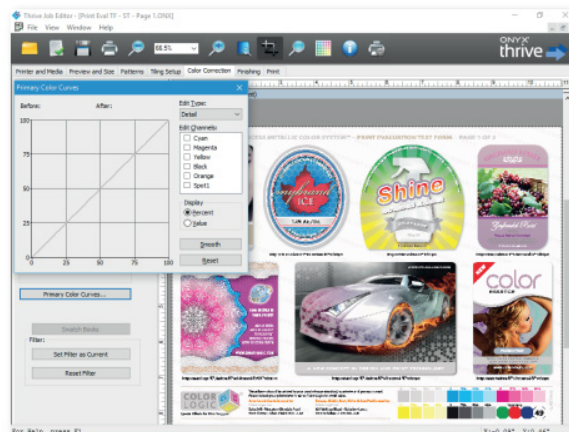


Step 4. Close out of all dialogs and click the Apply button on the Printer and Media tab to refresh the preview.

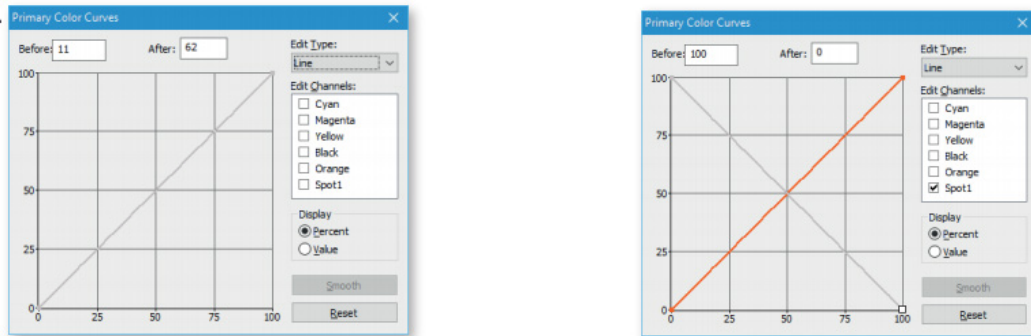
TIP: This setting can be automated by setting up the spot separation mapping in a Quick Set.

How to invert the Color-Logic spot separation (CL 4713 SILVER) to print with white ink. **Note:** This working procedure requires editing the Primary Color Curves in Job Editor.

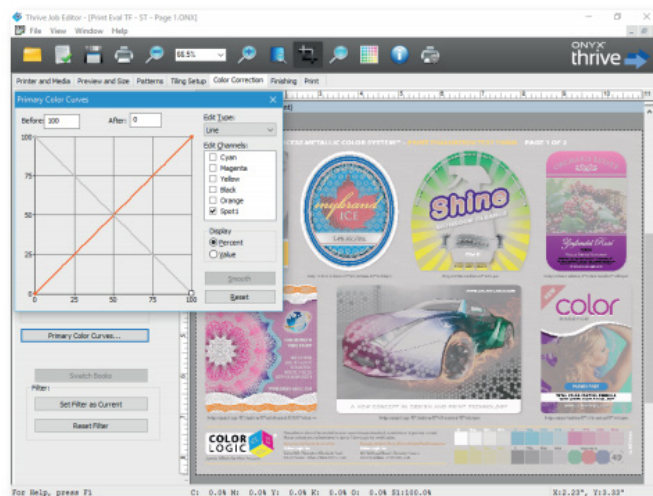
Step 1. In Job Editor, go to the Color Correction tab, and click on the Primary Color Curves button.



Step 2. Change “Edit Type:” to “Line” then under “Edit Channels:” select Spot1 (CL 4713 SILVER), then grab the handles and reverse the slope.

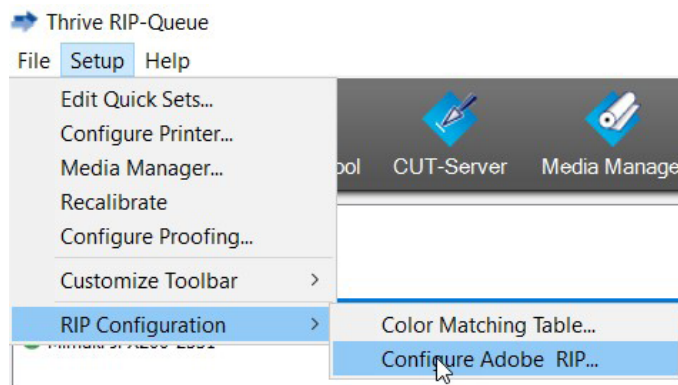


Step 4. Data for just the channel should now be inverted. **TIP:** This color correction setup can be exported as a color filter and added to a Quick Set for automation. (The Filter Manger can be found by selecting the Filter button on the Color Correction tab > then selecting the Manager button.)

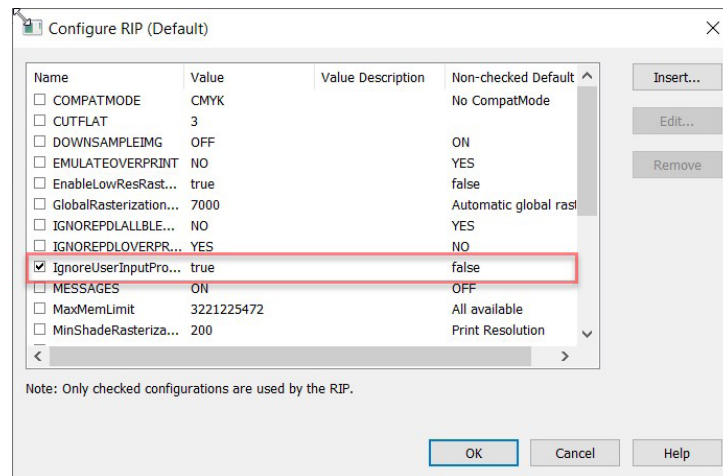


Configuring the ADOBE RIP setting to process the Color-Logic sample file. The appropriate ADOBE RIP settings can be made in three different placed depending on the desired workflow. The change can be made as the new default for all files, part of a Quick Set and applied to files with that Quick Set applied and per file via Job Editor.

Step 1. In RIP-Queue select Setup, RIP Configuration and Configure Adobe RIP

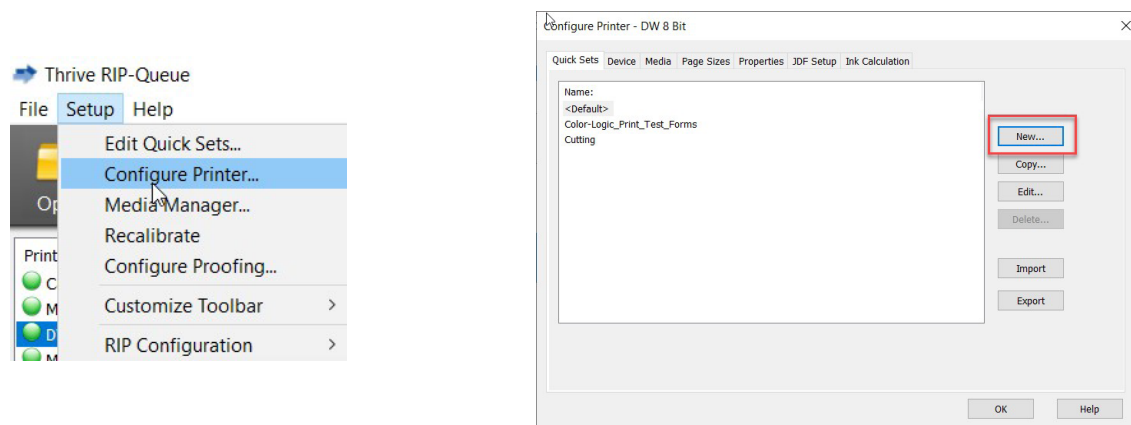


Step 2. From here, 2. Select and check the box next to IgnoreUserInputprofiles then click OK and exit.

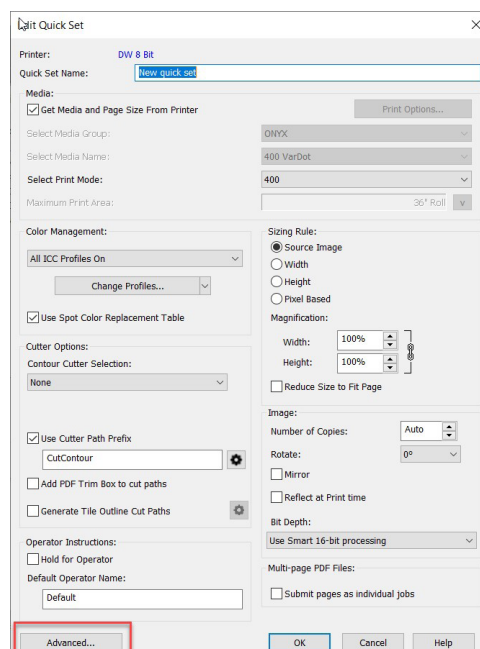


Making the change as part of a QuickSet:

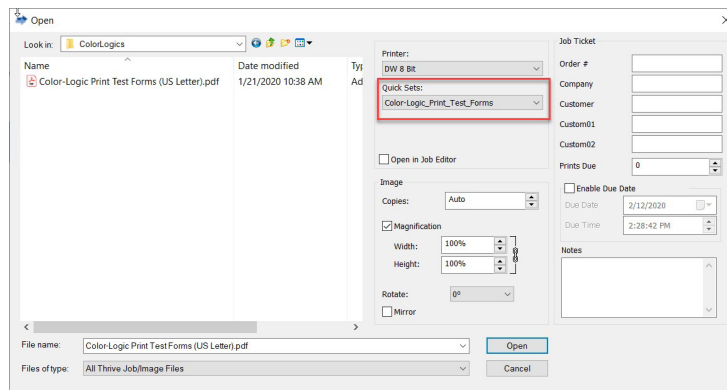
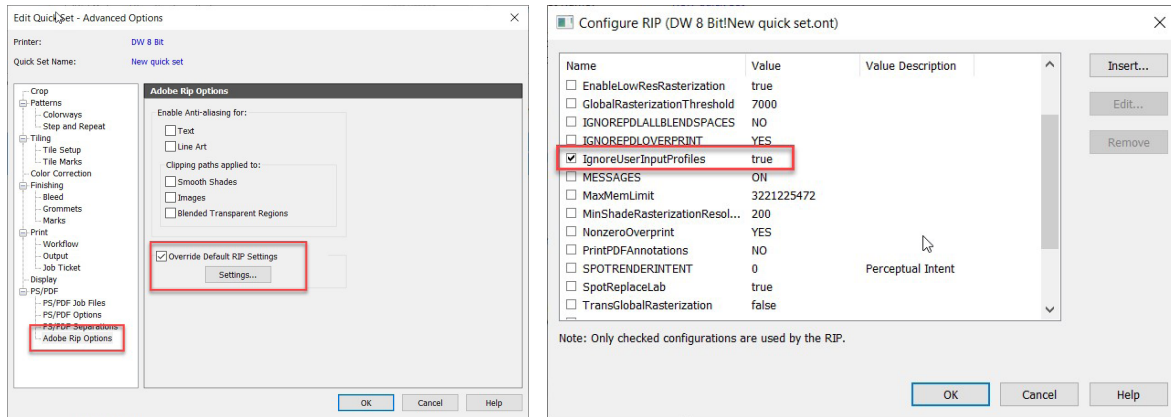
Step 1. Select Configure Printer then New in the Quick Sets tab.



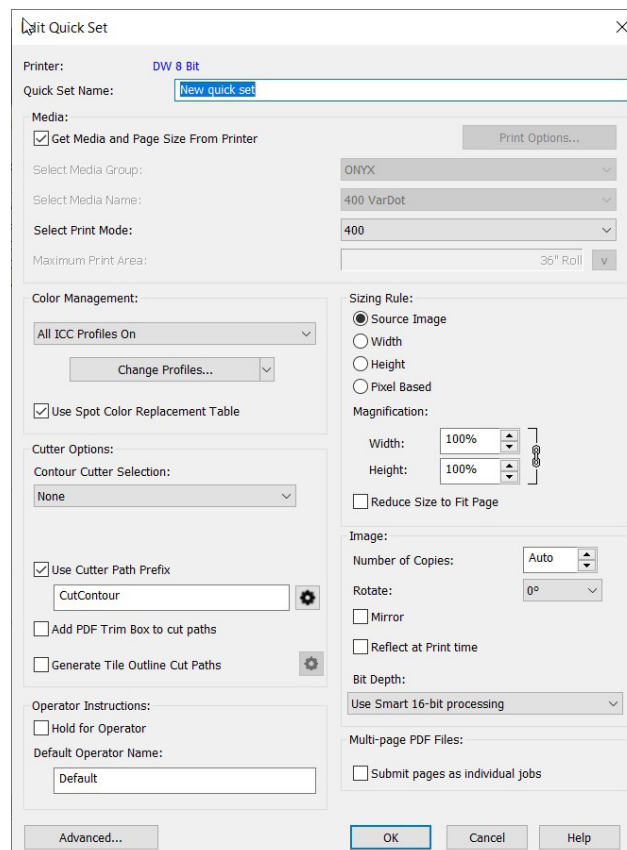
Step 2. Assign a name for the Quick Set e.g. Color-Logic_Print_Test_Forms.



Step 3. Select Advanced then ADOBE RIP Options and check the box next to Override Default RIP Settings and click the Settings Button and check the box next to IgnoreUserInputProfiles.

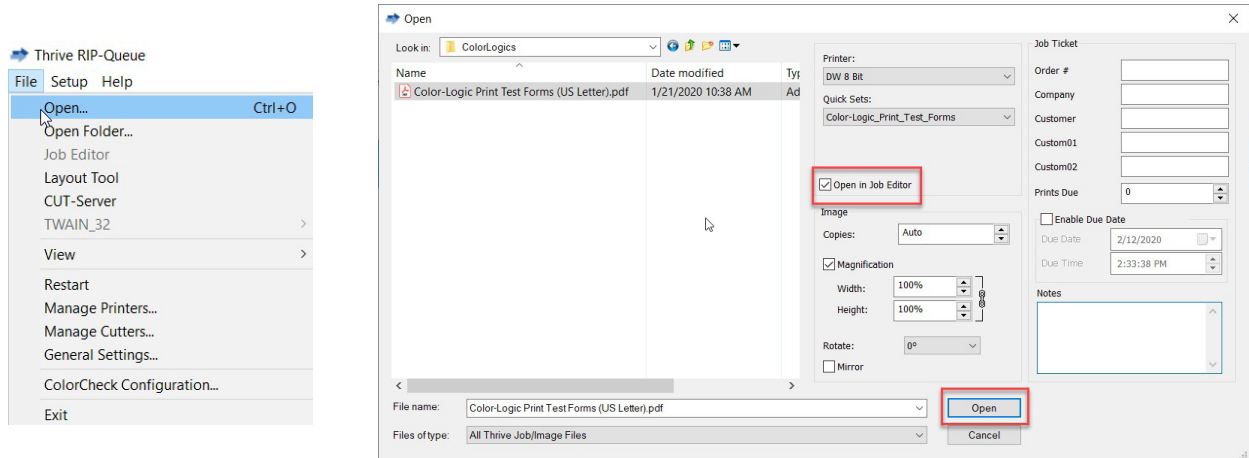


Step 4. Click OK four times to get back to RIP-Queue. There will now be a new Quick Set with the name provided to use when opening files. Assign a name for the Quick Set e.g. Color-Logic_Print_Test_Forms.

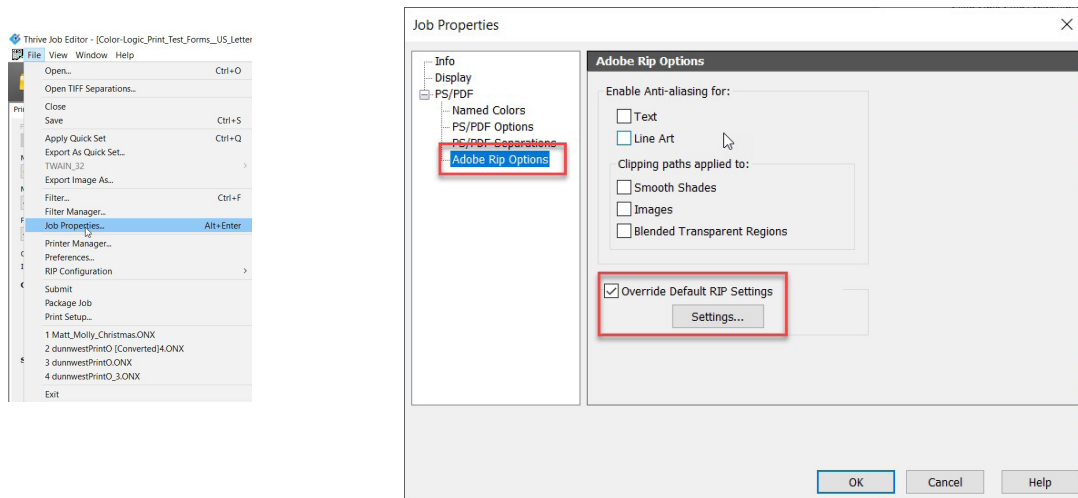


Making changes to the ADOBE RIP setting for an individual file via Job Editor

Step 1. In RIP-Queue go to File and Open. Select Open in Job Editor, choose the correct file and click open.



Step 2. Select File and Job Properties then select ADOBE RIP Options under PS/PDF. Check Override Default RIP Settings and click on Settings.



Step 3. Check the box next to IgnoreUserInputProfiles then select OK twice and then the Apply button to apply the updated RIP settings.

