



Cutting with ONYX: Guide to Designing Cut Paths Using Adobe Illustrator

Introduction

This tutorial introduces how to design a file with a contour cut path. The cut path is used for a print and cut workflow in the ONYX software. Many design applications are capable of accomplishing this. This document will focus on Adobe Illustrator, but the main steps such as using a spot color with a specific name, layer order, and file type apply to other vector applications.

A Basic Overview how ONYX Detects Cut Paths

Cut paths are detected based on spot color names. By default the ONYX software looks for spot colors beginning with the prefix CutContour. This can be changed in the Quick Sets or in Job Editor. The spot color names must match the value in the [Use Cutter Path Prefix] field in order to be treated as a cut path. With the default name CutContour, ONYX will look for a spot color that begins with that name. Multiple spot colors can be defined as a cut path, but they must all begin with the prefix listed in the ONYX software.

Step 1 - Create a Spot Color

We will start with the shield image. The goal is to create a cut path around the logo mark. With the image loaded we need to create a spot color that will represent the cut path. Click on the New Swatch button under the Swatches window.

The Swatch Options window will open. First the color needs a name. In this example we will call it CutContour. The name can be anything, it just needs to start with the value in Use Cutter Path Prefix.

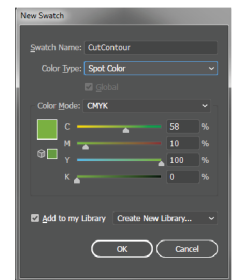
Next set the Color Type to Spot Color. When the color is created it will be indicated by a triangle with a black dot in the center ().

Finally choose a color to represent the cut path. Anything other than white will work.



ONYX

Image file for creating a cut path.



Adding a Spot Color in Illustrator

Step 2 - Define the Cut Path

Next we need to define where the cut path will be. The shape we want in this example is a path that is the same as the shape of the image. We want a little white space between the image and the cut path.

Take the outer shape and offset the path. A new shape is created. Now apply the spot color to the stroke or fill attribute. If the final output file will be an EPS, use a fill and not a stroke. With a PDF either the the Stroke or Fill will suffice.



Offset path around the image has the spot color assigned to it.

Step 3 - Layer Order

After adding the cut path to the image, move the cut path objects to the top most layer or object order. Ideally create a new layer, then move it to the top of the layer order and place all cut path objects into the new layer.

Placing the cut path objects higher than the rest of the image will prevent potential problems with the cut paths being detected.

After completing the cut path the file can be saved as a PDF or EPS.

Step 4 - Configuring a Quick Set for Cutting

In the ONYX software we will create a Quick Set to use for a print and cut workflow.

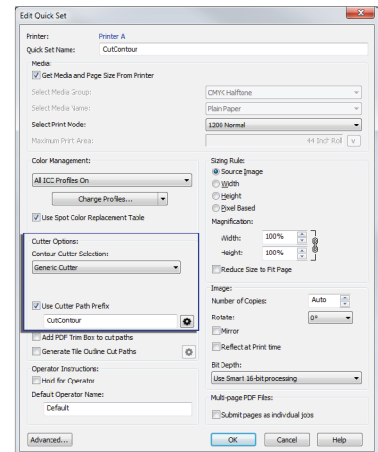
Go to RIP-Queue and highlight the printer, then click Configure Printer. This will shutdown the server and cancel any jobs ripping or printing.

Under the Quick Set tab click on New. We will give the Quick Set a name, Cut Workflow.

Next configure the Use Cutter Path Prefix value. This is the prefix ONYX will look for in a spot color name. In this example it will be left as CutContour.

Finally the Contour Cutter Selection will be set to Generic. The cutter marks you will choose depends on the cutter that will be used.

Click OK out of the Quick Set and Configure Printer windows to save the new Quick Set.



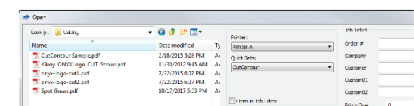
Cutter options in the Quick Set

Step 5 - Opening the File

Finally we are ready to open our file. In RIP-Queue click Open. Make sure the CutWorkflow Quick Set is chosen then select the file.

When the job is previewed the cut paths are missing. This happens because the software strips the path out of the file and uses it to create a cut file. When the image is ready it can be printed. The print will have the selected marks around the image with a barcode.

The cut file used in CUT-Server is created at the beginning of the print stage. Cut files will show up automatically in CUT-Server.



Quick Set menu in the Open window



Image previewed in ONYX without the cut path