

Understanding Reflect at Print Time and Mirrored

Improvements have been made in ONYX for the options Reflect at Print Time and Mirrored. The improvements address the needs in some workflows such as textile. With these improvements, RIP-Queue now handles jobs that are set to Reflect at Print Time and jobs set to Mirrored differently. This document will explain both options and the differences both provide.

Understanding Reflect at Print Time

Reflect at Print Time is the new name for Print Reflection. This option is a post ripping method for flipping a nest of images. Reflect at Print Time also reflects all ONYX generated marks and print labels.

Reflect at Print Time can be enabled through the Quick Set, in Job Properties, and in Job Editor. When Reflect at Print Time is enabled the job will only nest with other jobs that have Reflect at Print Time enabled.

Using Reflect at Print Time will not flip the individual jobs, but the entire nest. This is why jobs using this option will only nest with other jobs using the same option. For example a nest contains two images, job A and job B. In the nesting preview Job B is nested to the left of job A. If Reflect at Print Time is turned off for both images, the nest preview now has job B nested to the right of job A. In figure 2, the nest on the left shows a group of images without Reflect at Print Time enabled. The right image shows the same nest when Reflect at Print Time is enabled. The entire nest will be reflected.

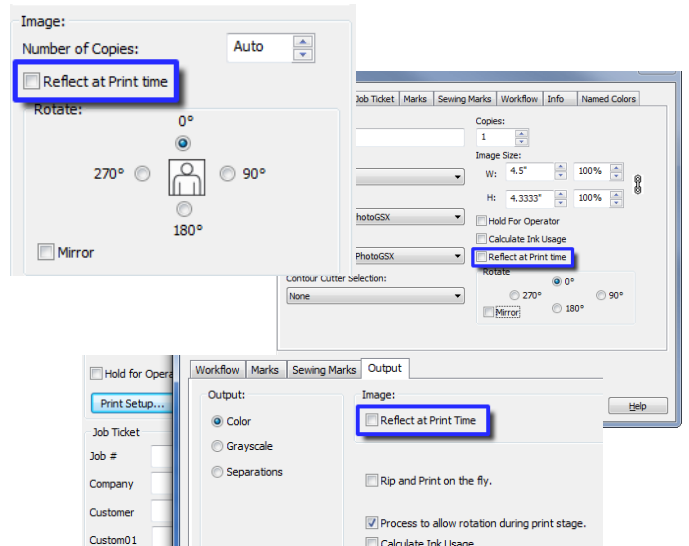


Figure 1: Reflect at Print Time in the Quick Set options, Job Properties in RIP-Queue and in Job Editor

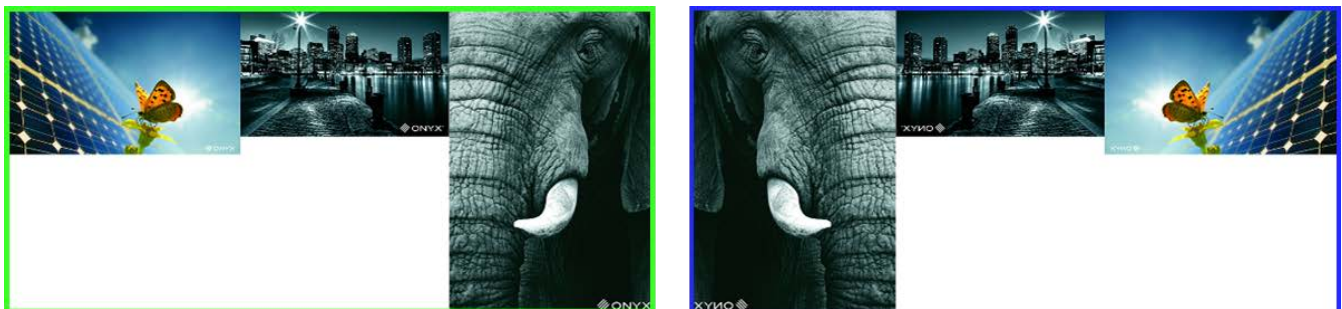


Figure 2: A nest of images before using Reflect at Print Time (left) and the same nested images after apply Reflect at Print Time (Right)

| C... | Print Mode | Resol... | Reflected | Contour C... | Rip Time |
|------|-------------|----------|-----------|--------------|----------|
| 1 | 720_8Pas... | 720-CT | | None | 00:00:05 |
| 1 | 720_8Pas... | 720-CT | | None | 00:00:05 |
| 1 | 720_4Pas... | 720-CT | | None | 00:00:05 |
| 1 | 720_8Pas... | 720-CT | | None | 00:00:05 |
| 1 | 720_8Pas... | 720-CT | Yes | None | 00:00:05 |

Figure 3: Reflect column in RIP-Queue

Reflect at Print Time will flip an image after the job has been ripped. As a result, the individual image previews in RIP-Queue and Job Editor will not show the image reflected. The reflection is only viewable in the nesting preview. There are other methods to identify jobs that use the option Reflect at Print Time. In RIP-Queue there is a new column called Reflected. The default position is after the Resolution column. If a job has this enabled, the column will indicate this with a Yes, else the job is not using Reflect at Print Time. The

Job Properties window in RIP-Queue will indicate the job is reflected by showing the option enabled or under the Info tab.

In the contour cutting workflow, Reflect at Print Time will not reflect output cut files. The print output will reflect cut marks and barcodes. Depending on the workflow, the cut paths in the cut file may need to be reflected. There is a new option in CUT-Server called *Mirror Cut Paths*. This option flips the cut paths to match the reflected print. To use it highlight the cut job and click on *Mirror Cut Paths*. This option is located on the right side of CUT-Server under Cut File Tools.

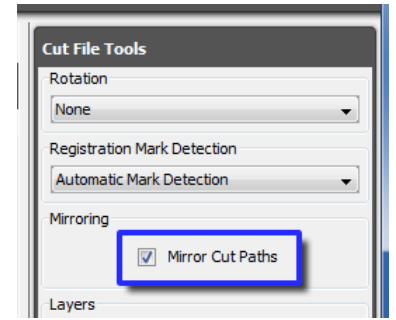


Figure 4: Mirrored Cut Paths in CUT-Server

Understanding Mirrored

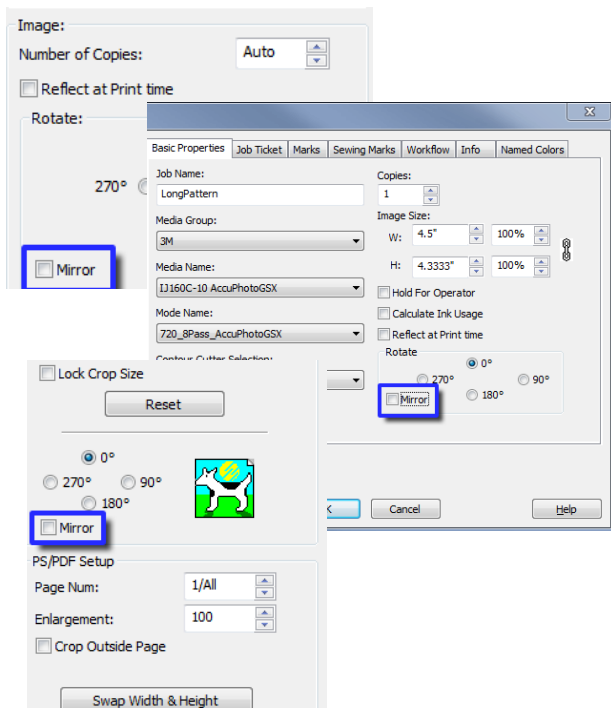


Figure 5: Mirrored in the Quick Set options, Job Properties in RIP-Queue and in Job Editor

Mirrored will reflect the job, just like Reflect at Print. It does not reflect any ONYX generated marks or labels. It also can nest with jobs that are not set to Mirrored. This option reflects the image during the ripping stage. Previewing jobs that have Mirrored enabled show the image flipped in RIP-Queue's Job Properties window, in Job Editor and in the nesting preview.

Mirrored is found in three places: Quick Set options, Job Properties in RIP-Queue, and in Job Editor.

Mirrored jobs will not reflect the cut paths when a cut file is generated by RIP-Queue. If the workflow needs the cut paths to be flipped this can be done using *Mirror Cut Paths* in CUT-Server.

It is important to know that Mirrored reflects each image independently of the others. It does not reflect the nest. Using Mirrored and contour cutting will only work if there is one job nested. If there are multiple jobs that need to be flipped it is best to use Reflect at Print Time.

Figure 6 shows the a nest of images without Mirrored enabled. On the right each image is mirrored. The nesting is the same, but the images are independently reflected.



Figure 6: Nested images without Mirrored enabled (Left) and the same images with Mirrored applied (Right)

Summary

Reflect at Print Time and Mirrored do very similar things, they are not the same. Below is a summary table outlining what the two options do.

| | Reflect at Print Time | Mirrored |
|--------------------------------------|-----------------------|----------|
| Reflected in nesting preview | | |
| Reflected in Job Properties | | |
| Reflected in Job Editor | | |
| Reflects ONYX generated marks | | |
| Reflects Print Labels | | |
| Reflects ONYX generated cutter marks | | |
| Reflects contour cut paths | | |
| Nests with non-reflected jobs | | |

Table 1: Differences between Reflect at Print Time and Mirrored.