



Introducing ONYX 22

Our newest version of industry-leading software

ONYX 22 introduces a new user experience with technologies designed for modern print businesses wanting fast, easy-to-use tools for everyday automation.



What's new in ONYX 22.5?

- ONYX Archive to back-up, search, and restore jobs
- XY trimmer updates for simpler cut workflows
- Color updates for predictable output and additional device support
- The latest Adobe PDF Print Engine (APPE 6.1)





A New User Experience

ONYX 22 simplifies the print production process

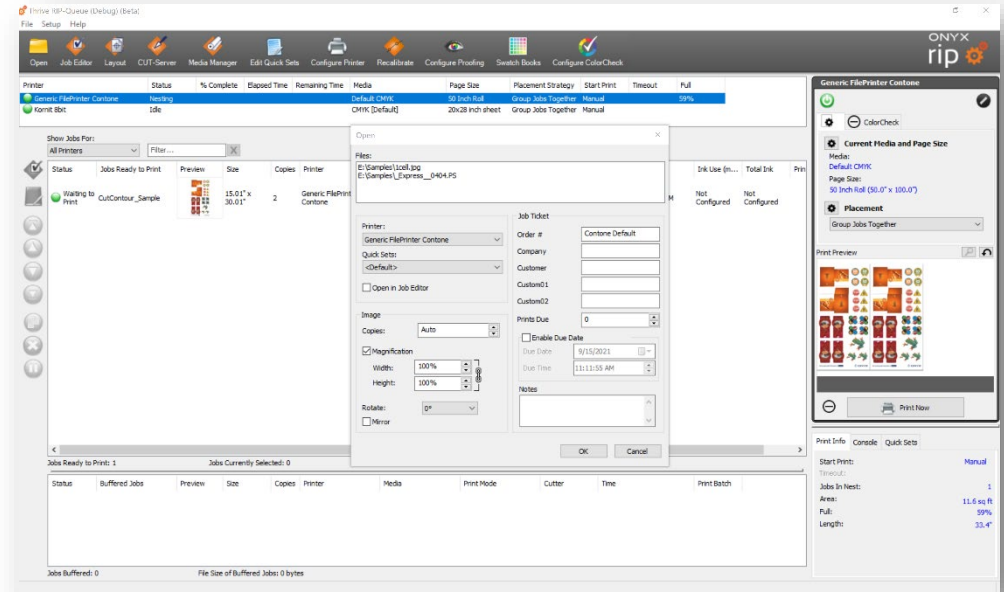
User experience expectations are changing. Software owners and operators need fast, easy-to-use tools that are intuitively designed.



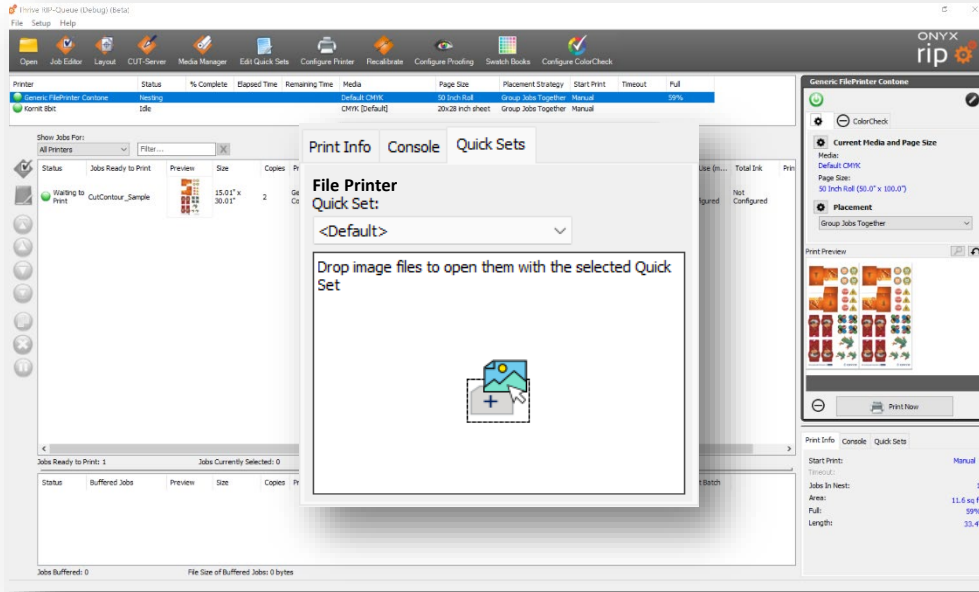
ONYX 22 introduces a new drag-and-drop user experience for print and automation to simplify the print production process.

Save time with drag-and-drop user interface

- Drag-and-drop files directly to the RIP-Queue
- Make fast edits with fewer clicks before ripping including:
 - page size
 - rotation
 - mirror
 - copies
- Add important customer data and job notes that carry through to production



Achieve automation with drag-and-drop Quick Sets



- Drag-and-drop files to the Quick Sets tab to apply easy automation
- Automatically add Quick Set common jobs settings to the RIP-Queue
- Reduce manual errors on complex jobs



ONYX Archive

A new way to back-up, search, and restore jobs

- New for ONYX 22.5, ONYX Archive improves RIP performance, saves valuable time, and reduces the risk of data loss with an easy way to backup, search for, and restore print jobs for future use.
- Automate print job archiving using ONYX Quick Sets
- A standard feature for all ONYX RIP and Print Workflow products

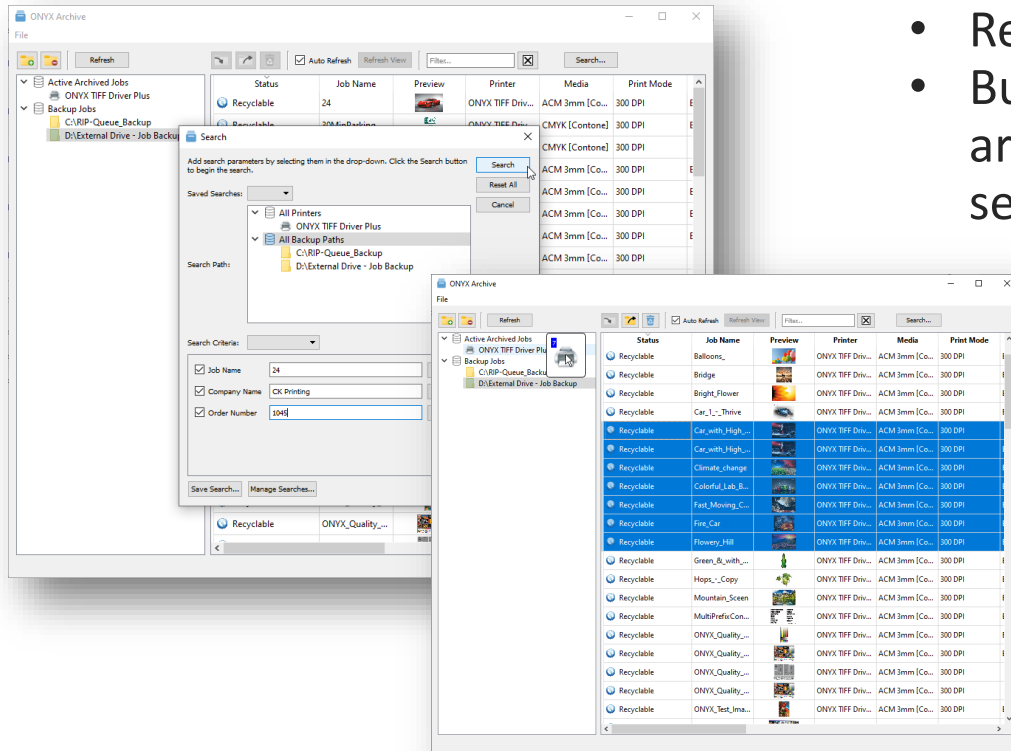
The screenshot displays the ONYX software interface. At the top, the 'Media Manager' tab is active, and the 'ONYX Archive' icon is highlighted with a red box. Below this, a window titled 'ONYX Archive' is open, showing a file tree on the left with folders for 'Active Archived Jobs', 'Backup Jobs', and 'External Drive - Job Backup'. The main area of the window displays a table of archived jobs.

Status	Job Name	Preview	Printer	Media	Print Mode
Recyclable	Car_1_-_Thrive		ONYX TIFF Driv...	ACM 3mm [Co...	300 DPI
Recyclable	Car_with_High...		ONYX TIFF Driv...	ACM 3mm [Co...	300 DPI
Recyclable	Car_with_High...		ONYX TIFF Driv...	ACM 3mm [Co...	300 DPI
Recyclable	Fast_Moving_C...		ONYX TIFF Driv...	ACM 3mm [Co...	300 DPI
Recyclable	Fire_Car		ONYX TIFF Driv...	ACM 3mm [Co...	300 DPI
Archive	Car_1_-_Thrive		ONYX TIFF Driv...	ACM 3mm [Co...	300 DPI
Archive	Car_with_High...		ONYX TIFF Driv...	ACM 3mm [Co...	300 DPI
Archive	Fast_Moving_C...		ONYX TIFF Driv...	ACM 3mm [Co...	300 DPI
Archive	Fire_Car		ONYX TIFF Driv...	ACM 3mm [Co...	300 DPI

Below the 'ONYX Archive' window, a 'Buffered Jobs' window is visible, showing a list of print jobs. A context menu is open over one of the jobs, with the option 'Send job to ONYX Archive...' selected.

Order	Status	Buffered Jobs	Preview	Size	Copies	Printer	Media	Print Mode	Cutter	Rip Time	Last Printed	Received	Print Batch
1	Recyclable	whutterstd_437357...		12.0" x 8.0"	3	ONYX TIFF Driver Plus	CMYK [Contone]	150 DPI	None	00:00:01	5/11/2023 1:24:06 PM	5/11/2023 12:36:49 PM	
2	Recyclable	shutterstd_222807...		12.0" x 10.98"	3	ONYX TIFF Driver Plus	CMYK [Contone]	150 DPI	None	00:00:01	5/11/2023 1:21:06 PM	5/11/2023 12:36:49 PM	
3	Recyclable	perrot-04		12.0" x 10.98"	3	ONYX TIFF Driver Plus	CMYK [Contone]	150 DPI	None	00:00:01	5/11/2023 1:21:06 PM	5/11/2023 12:36:49 PM	

A new way to back-up, search, and restore jobs



- Restore jobs using drag-and-drop
- Buffered jobs can be automatically archived to any folder with intuitive search and filter options including:

- All fields
- Job Name
- Printer
- Media
- Mode
- Cutter
- Order Number
- Company Name
- Custom 01
- Custom 02
- Notes
- Date Received
- Date Printed



Everyday Automation

Solving the need for everyday automation

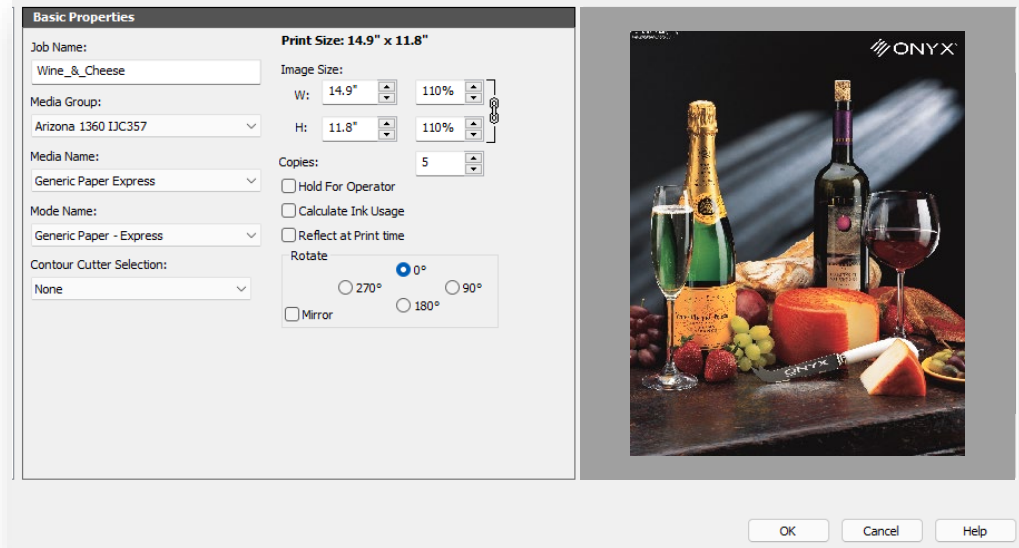
Modern print businesses need easy-to-use automation controls that reduce manual touch points that slow production and leave room for errors.



ONYX 22 introduces new technologies to streamline production for everyday automation.

Design to print to in one seamless workflow

- Smart job submission with filename automation ensures prints match customer orders
- Define print settings by filename including:
 - Copies (1 to 9999)
 - Magnification (1 to 10,000%)
 - Rotation (0, 90, 180, 270)
 - Order Number
 - Company Name
 - Customer Name
- Filename print settings automatically apply in the RIP to ensure output meets expectation
- Automating job ticket information reduces manual error and improves reporting

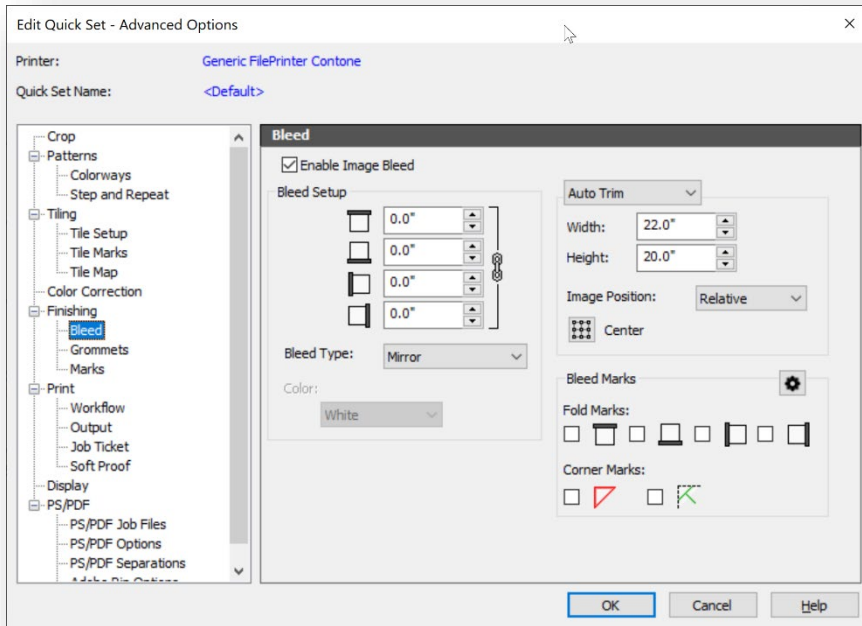


Wine & Cheese_#JMD#_5;110.pdf

=

5 copies, 110% magnification

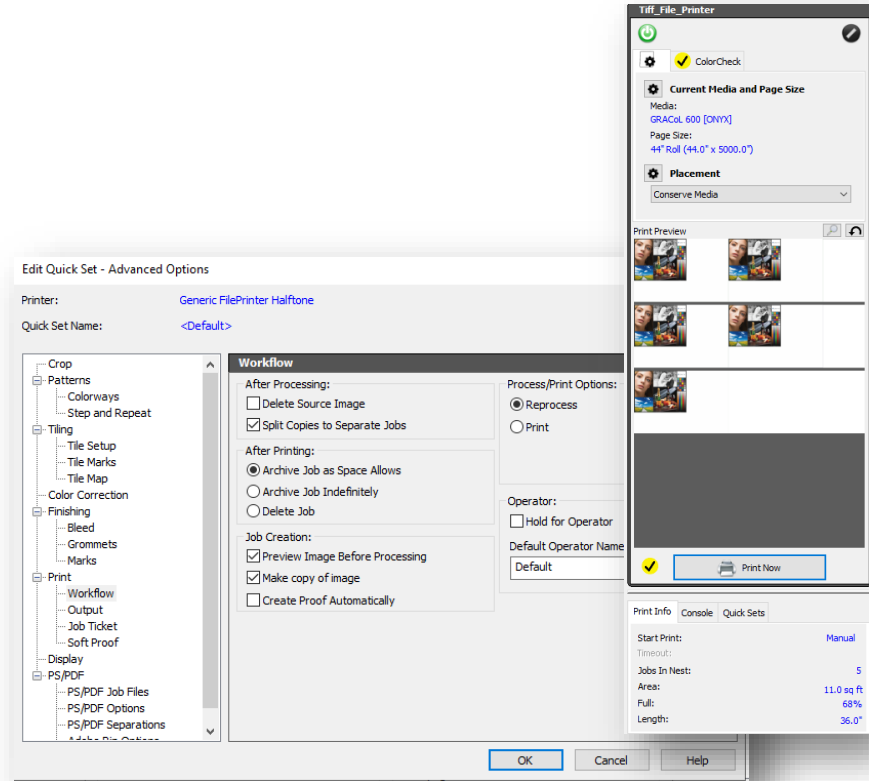
Enhanced controls for nest management



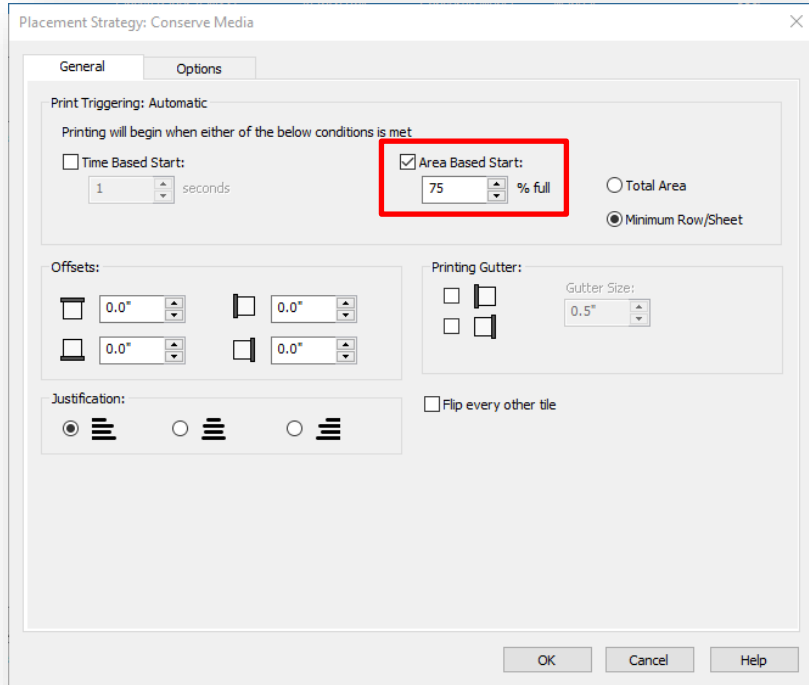
- Easily manage artwork placement with auto-trim for flatbed or DTG printing
- Choose relative or present artwork locations on pre-cut materials in an area before nesting
- Automate placement strategy using Quick Sets

Split copies into jobs to save sheet media

- Split copies to individual prints to manage sheet media usages
- Hold rows based on percent full
- Automate print settings using Quick Sets



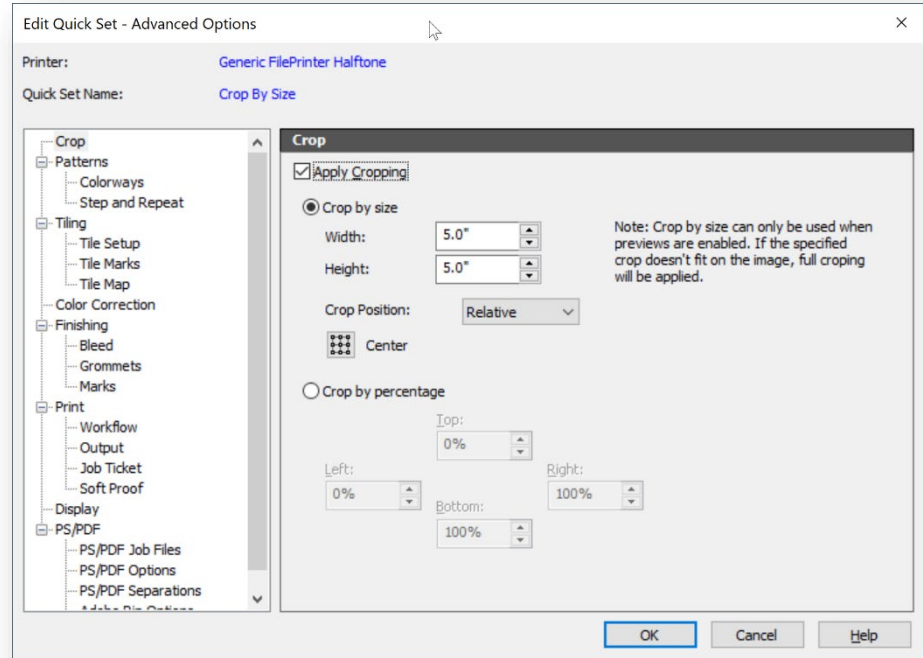
Save time and avoid waste on multiple nests



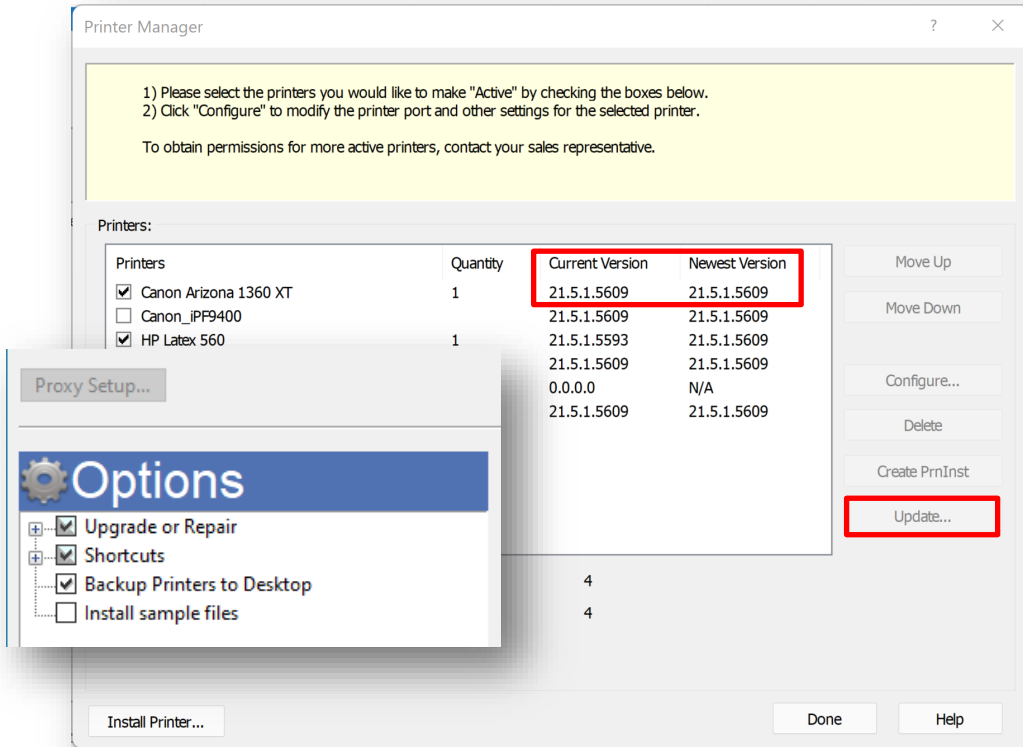
- Row and sheet-based auto print trigger controls
- Print copies across multiple nests
- Choose to hold or automatically release a Row or Sheet based on the percentage full

Remove scaling guesswork for sheet media

- Automate image cropping for sheet media
- Remove sizing guess-work with automated crop-to-fit for any print or printer
- Easily crop artwork to remove unwanted borders, bleed, marks, and trim



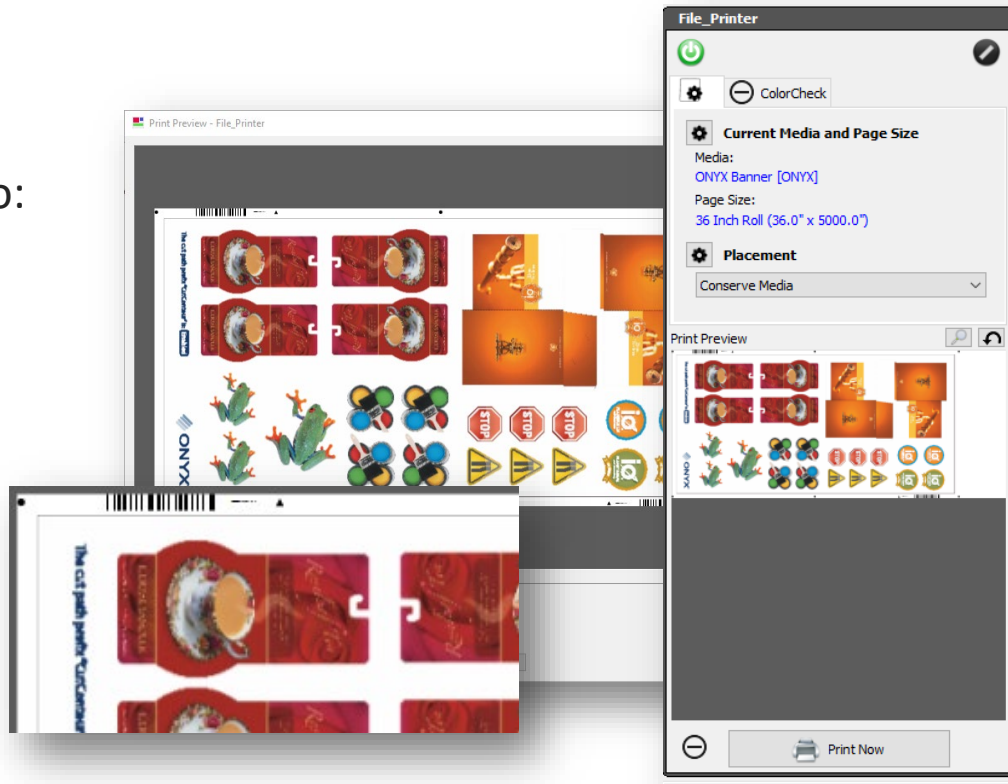
Get version updates without losing printer data



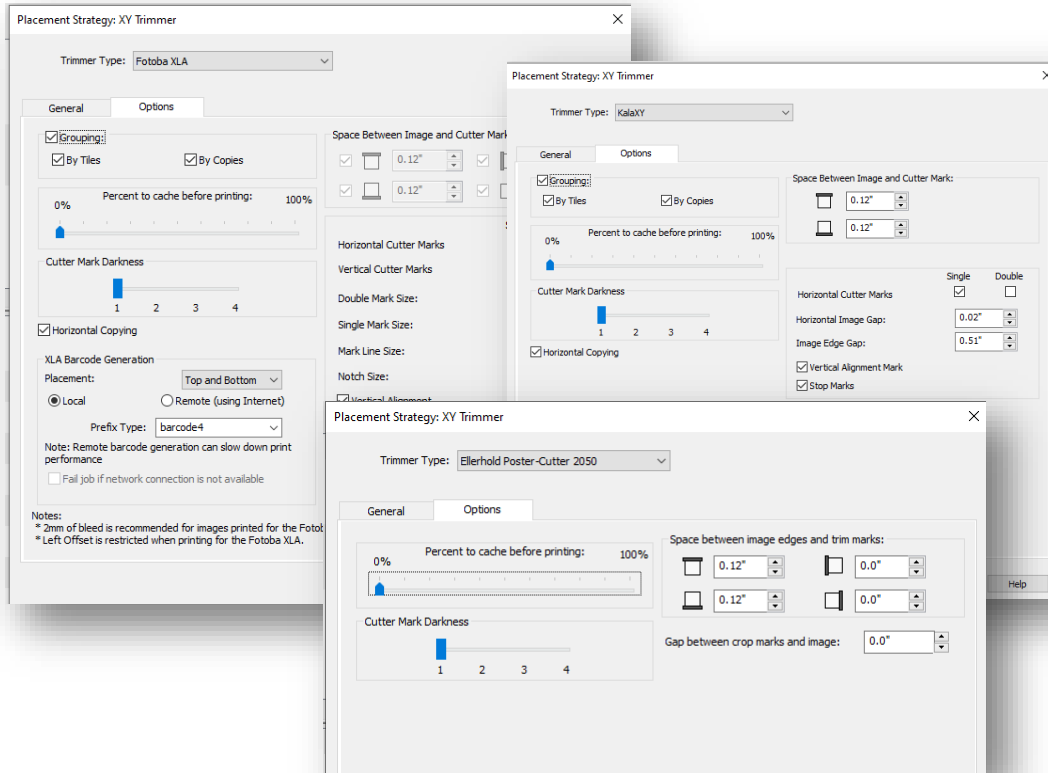
- Easily install, update and back up printer data
- Check printer driver version in printer manager
- Install or update printers directly from RIP-Queue
- Printers automatically backed up at install or version upgrade

New cut mark previews

- Easily verify cutter registration marks with cut mark previews
- New cut mark previews apply to:
 - i-Cut
 - MultiCam
 - ZCC
 - Mimaki ID Cut Series
 - HP Latex Plus
 - Eurosystems OptiScout 2
 - Colex Sharpcut Pro
 - Summa S One
 - Summa S2
 - Graphtec F9000
 - Graphtec CE7000
 - Kongsberg IPC (new for ONYX 22.5)



New for ONYX 22.5: XY trimmer updates



- ONYX 22.5 improves the XY trimmer user experience with new menu options for faster setup and configuration
- New XY trimmer device support is included for KALA and Ellerhold Poster-Cutter 2050
- Support for cloud-based Fotoba barcode generator



New color tools

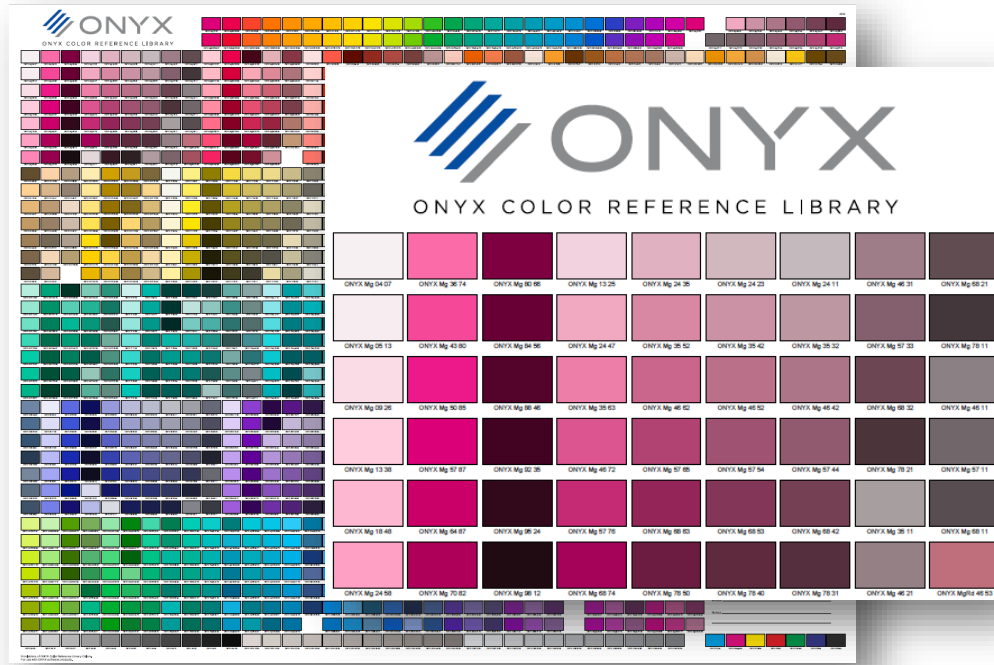
New color tools for accuracy and automation

The print industry looks to ONYX software as the standard for color output quality with tools designed for intuitive use.



ONYX 22 introduces new color tools and devices for color accuracy and an all-new ONYX Color Reference Library to create internal color matching across devices.

Set internal color matching for every printer



- New ONyx Color Reference Library for printer color matching
- Quickly see what colors are possible on each device and media
- Find and set color matches based on hue and chroma
- Showcase output capabilities with print buyers
- Booklet displays accurate, close, and simulation colors by device
- Integrated into all ONyx products
- Install and sync pallet to Adobe CS products
- Poster and booklet access to communicate color expectations based on printer output

Fast, easy G7 standards update for any profile

- Easy G7 calibration using ColorCheck*
- Directly update G7 calibration to existing profiles
- One-click G7 update without printing new swatches

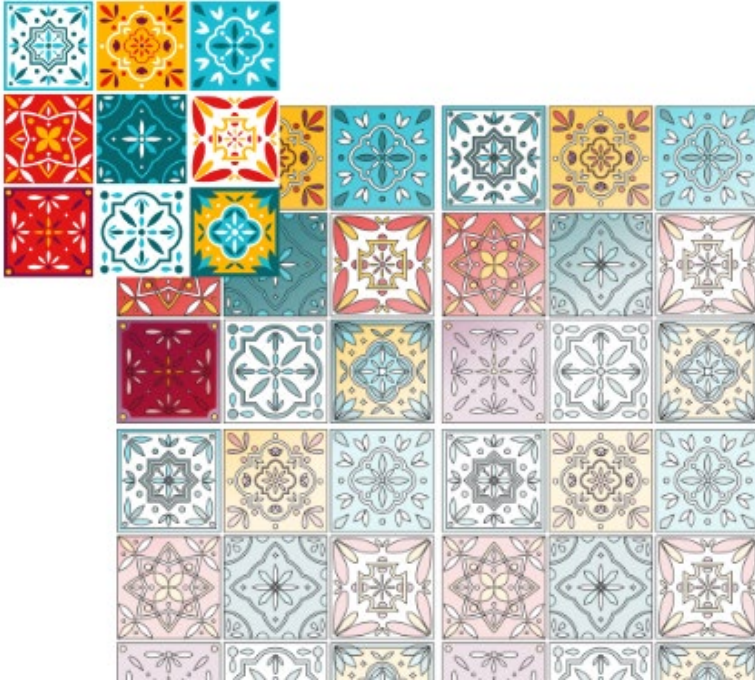
Verification Results

Printer: Canon iPF Pro 4000
Media: Canon Satin 200 G7 [G7]
Mode: 600CT Normal Original 2
Verification Status: **PASS**
ColorCheck Swatch: G7
Environment: G7 Process Control Master
Data Set: G7 Grayscale - P2P51
Verification Expiration: Never Expires
Color Device: Lab Text File
Measurement Condition: N/A
Options: Using G7 Native CMY
Using Offset Print Tolerances

Verification Test	Metric	Tolerance	
CMY NPDC mean wDeltaL	0.6	<= 1.5	✓
CMY NPDC max. wDeltaL	1.7	<= 3.0	✓
Black NPDC mean wDeltaL	0.5	<= 1.5	✓
Black NPDC max. wDeltaL	1.0	<= 3.0	✓
Gray Balance mean wDeltaCh	1.0	<= 1.5	✓
Gray Balance max. wDeltaCh	2.7	<= 3.0	✓

Apply Update...
Report... View Measurements... ColorCheck Help...
Close

Enhanced color measurement for textile printing



- Textile light measurement for D65 daylight conditions
- Increase color accuracy for ICC profiles using D65 color with a 10° observer
- Ensure textile color standards are met

New for ONYX 22.5: New color device support

- ONYX 22.5 includes support for three new color devices to implement complete color management control including process control, profiling, color calibration, and spot color matching
- The new color devices are:
 - Nix Spectro 2
 - X-Rite eXact 2
 - Barbieri Textile
 - Myiro (included in ONYX 22.0)





The latest Adobe Technology

The latest technology for trusted output

Today's print buyers expect even the smallest graphical elements to be pixel perfect. Print businesses need a solution with technology they can trust.



ONYX 22 utilizes a new algorithm for rendering graphic elements including fine-line rendering for outlined text and barcodes.

Cleaner appearance on fine lines and outlines

- The latest Adobe PDF Print Engine (APPE) 6.1 to ensure accurate file processing and performance
- Lighter, cleaner appearance of fine lines
- Greater clarity of small point size text that has been outlined
 - Ideal for packaging applications

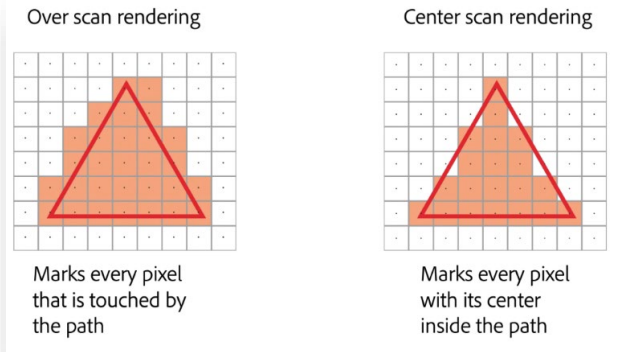
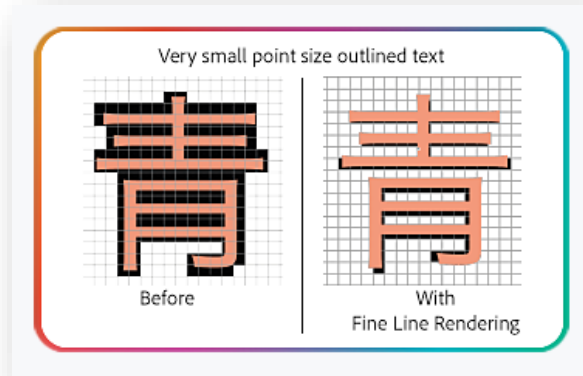
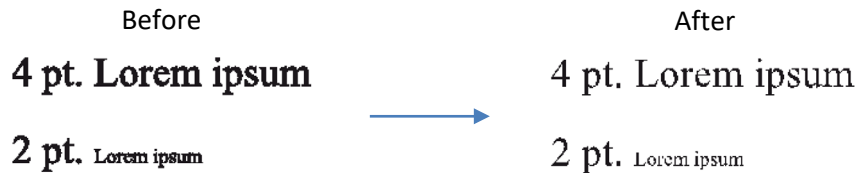
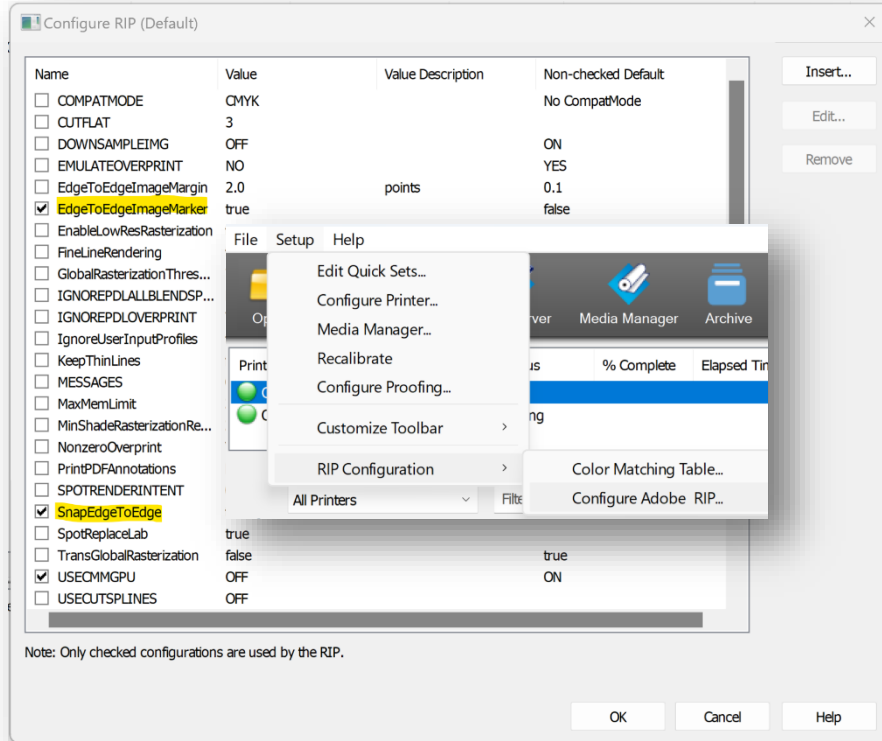


Image controls for textile and wallpaper printing



- Snap-to-Edge and Edge-to-Edge image printing ensures a more seamless workflow for Step and Repeat images used in textile and wallpaper pattern printing.
 - Snap-to-Edge removes white lines between copies
 - Edge-to-Edge image marker and margin controls help avoid any extra white space along the image edge



Additional features

Additional features in ONYX 22

- Printer install directly from RIP-Queue
- Access driver data and updates directly from printer manager
- Job count data displayed in RIP-Queue
- Snapshot color output calibration for Contone printers
- Corner radius option for rounding cut-paths
- New sizing options for file open
- Cutter registration mark preview from RIP-Queue (see next slide)
- Default save-to-desktop for printers when upgrading versions
- Automatic printer profile data backups
- Default C: drive installation location
- Multi-bite character support enhancements
- Core product architecture updates
- Modern database technology changes
- Hotfolder delay from 0-10 seconds




Additional features in ONYX 22.5

- Connection button from License Manager for Network Licenses
- ONYX Color Reference Library added as Named Color Replacement
- ONYX Color Reference Library and Cut Paths will now be included in CorelDraw product libraries.
- QR code scaling for dynamic print labels
- Baseline ColorCheck Added to Media Manager



For more information on the entire ONYX 22.5 feature list, please log in to the partner portal and visit the [product downloads](#) section of the website.



How to get ONYX 22.5

Try ONYX 22.5 free for 30 days

New customers can try ONYX 22.5 for free for 30 days. Simply click this [link](#) and create an account to download a trial.

Existing ONYX customers can upgrade through ONYX Advantage service agreements that are available in 1, 3, and 5-year terms.

ONYX 22.5 is included as part of an ONYX Go subscription.



ONYX 22.5 release dates and availability

When is ONYX 22.5 globally available?

- Global availability is expected to be available in **June 2023**
- Anyone who purchased on or after April 1st, 2023 is entitled to ONYX 22.5 at no charge but must request the update prior to September 30th, 2023
- New license orders after **April 15th, 2023** already include ONYX 22.5
- ONYX 21 is our previous version, ONYX 19 is our legacy version

ONYX 22.5 is available through ONYX Advantage or a new license:

- Upgrade and purchase requests can be made by contacting an Authorized ONYX Reseller or by emailing sales@onyxgfx.com
- ONYX 22.5 is available for all ONYX software products including ONYX Thrive and all ONYX RIP products

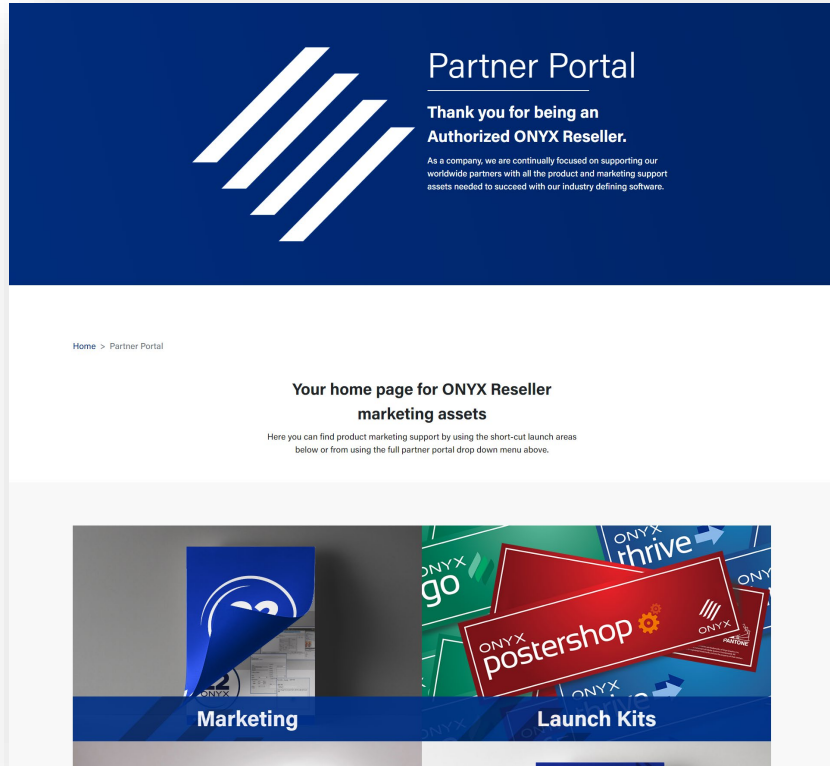
How do customers get the new release?

- ONYX 22.5 will be immediately available to existing ONYX Advantage agreement holders
- ONYX 22.5 will be immediately available to all ONYX Go subscribers
- Downloads will be available by visiting www.onyxgfx.com



Reseller Resources

Marketing collateral for Authorized ONYX Resellers



Authorized ONYX Resellers and Distributors have access to a number of marketing assets directly from the partner portal including:

- ONYX 22.5 GTM presentation
- How-to videos
- Brochures
- Email templates
- Logos
- Web banners
- Display ads
- Online help
- Press release

Simply visit onyxgfx.com and sign in