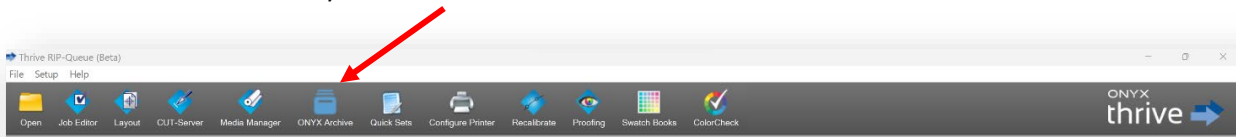


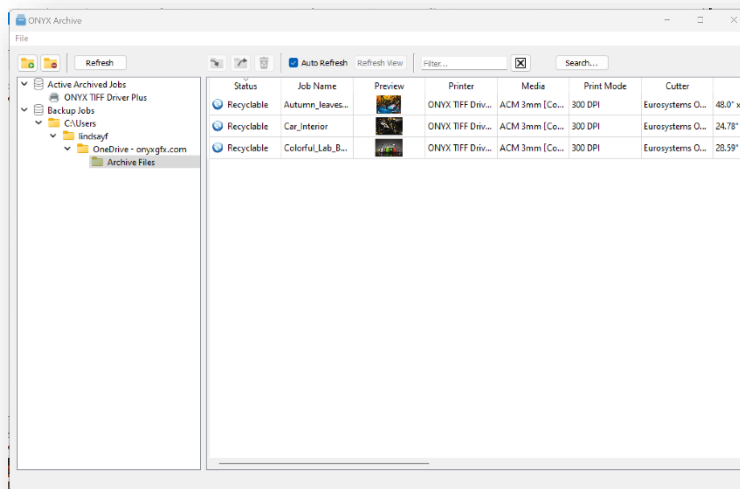
ONYX 22.5 Release Notes

- **ONYX Archive**

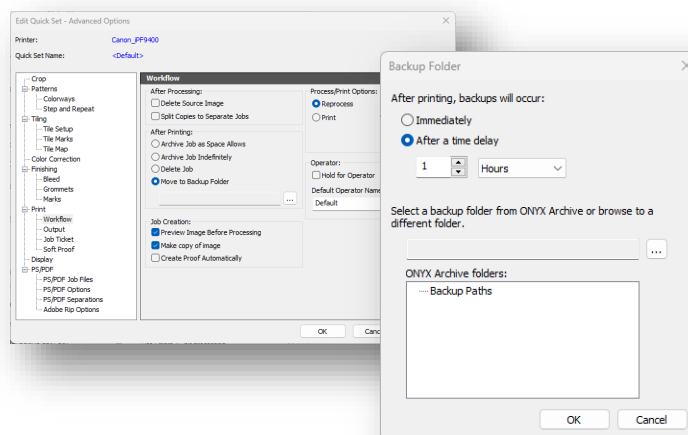
- You will need to reveal Archive in the toolbar. Go to Setup > Customize Toolbar > Then select/check Archive.



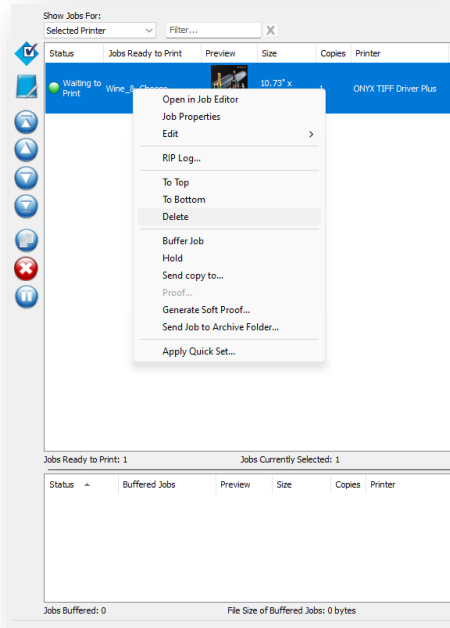
- ONYX Archive is the first step towards the added ability to store and reprint jobs in our RIP software. Use ONYX Archive to back up, search for, and restore jobs.



- Automated job sorting and custom delete time frame options.
- Frees up memory within the RIP that would otherwise be used to keep buffered jobs available for reprinting. Choosing your own custom folder path to sort and store your jobs any way you like.
- Can be set up in QuickSets (Advanced > Workflow) or manually in RIP Queue.



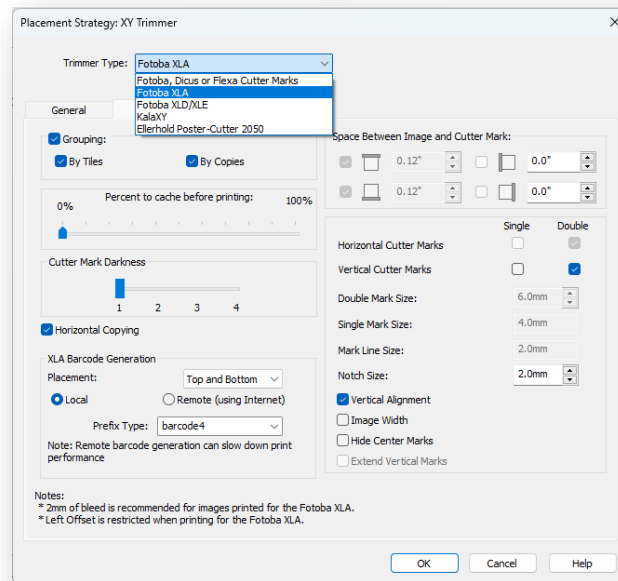
There have been updates made to help clarify actions related to ONYX Archive. Before developing this tool, we had an “Archive” action in the RIP Queue that would Buffer the job and send it to the area under the RIP-Queue. We have updated this action name to “Buffer Job,” while the option for using Archive is now “Send Job to Archive Folder.”



- **APPE Update**

- Using the latest Adobe PDF Print Engine - APPE 6.1.
 - Improved Print Quality
 - Most Up to Date RIP Performance
 - APPE 6.1 includes new ‘edge-to-edge image’ features to avoid the appearance of blank edge pixels in a Step & Repeat workflow (Note: this may cause a very slight adjustment in the page size to occur.)
 - “SnapEdgeToEdge” - Enables matrix adjustment code and slightly changes page size to avoid page edge artifacts. (In APPE 5.5 and later)
 - “EdgeToEdgeImageMarker” - Allows for image-to-edge scaling when set to True. By default, the value is set to False.
 - "EdgeToEdgeImageMargin" – Determines the margin used to snap an image to a surface bounding box. By default, the value is set to 0.1. It can be set to True, and the value would be 2.

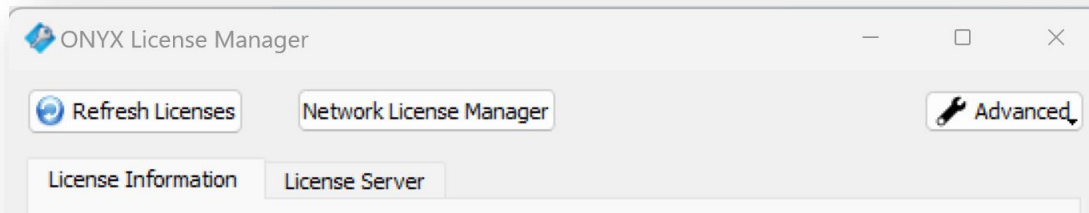
- **XY Trimmers**
 - Change in the layout of how to set up an XY trimmer for cutting.
 - Device Specific default settings.



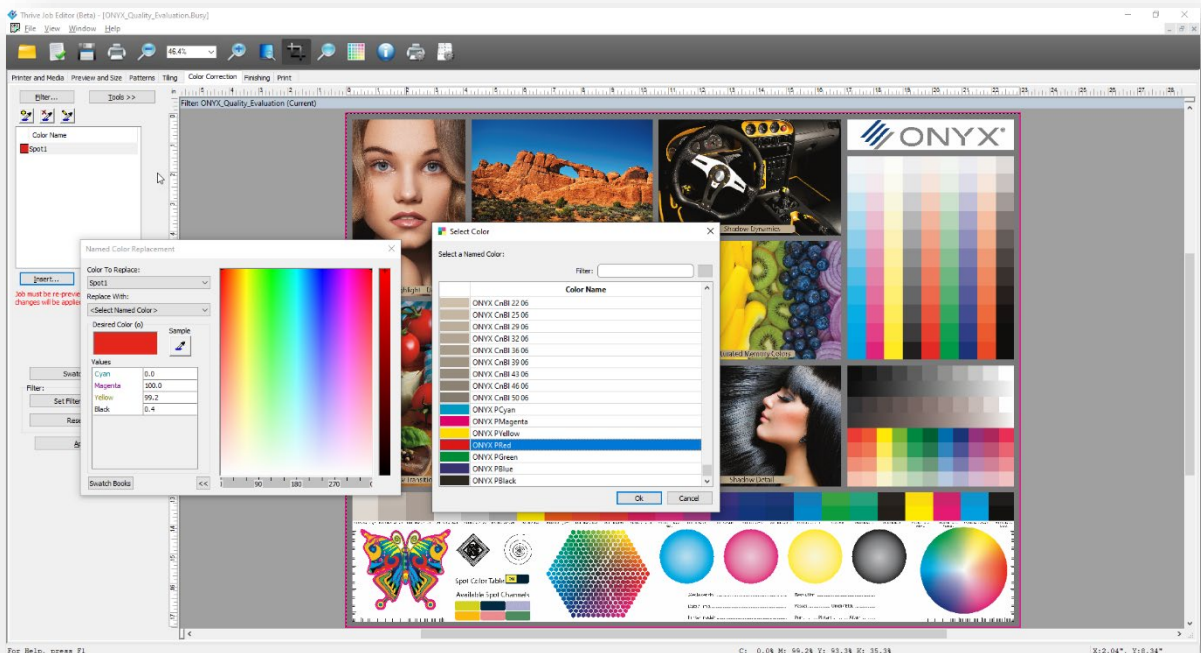
- **Fotoba updates:**
 - Independent barcode placement added. Can now select top and bottom barcodes independently or choose to use both.
 - Added option for remote Fotoba barcode generation.
 - The minimum size for the XLA is A5 in portrait orientation. This would result in no vertical cut lines being printed. There is now a warning mentioning the minimum size requirement. Vertical lines will still print, but the notches will not be generated. Fotoba does not recommend this, so this is not guaranteed to work.
- **Added Devices:**
 - KALA XY Trimmer
 - Ellerhold Poster-Cutter 2050
 - Default placement needs the left offset to be a minimum of 10mm, and the space between image edges and trim marks needs to be a minimum of 4mm on all sides for the cut marks to print.
- **New Color Devices:**
 - Nix Spectro 2
 - Barbieri Spectro LFP qb SDK (Additional QR Code capabilities to follow)
 - X-Rite eXact 2

- **License Manager**

- Network License Manager link button now added to local License Manager to assist in accessing licensing info and easier updates.



- **ONYX added the ability to use the ONYX Color Reference Library as part of the color replacement workflow in Job Editor and Quick Sets.**

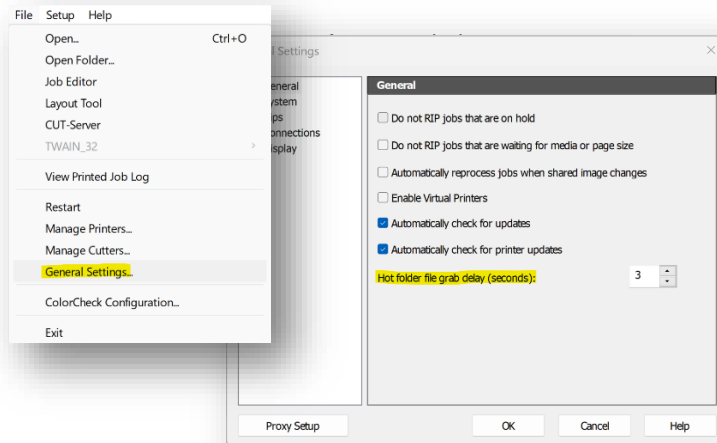


- Using the OCRL (Onyx Color Reference Library) can help address the challenge of inconsistent or inaccurate color reproduction.
- Using the OCRL, users can know how a specific color will be reproduced in a specific condition (Printer, ink, and media). Setting this expectation with clients can save time and money.
- The OCLR can be used with Color Replacements, Named Color Replacements, and automated within ONYX Quick Sets by using save color filters.

ONYX 22.0.2 Release Notes

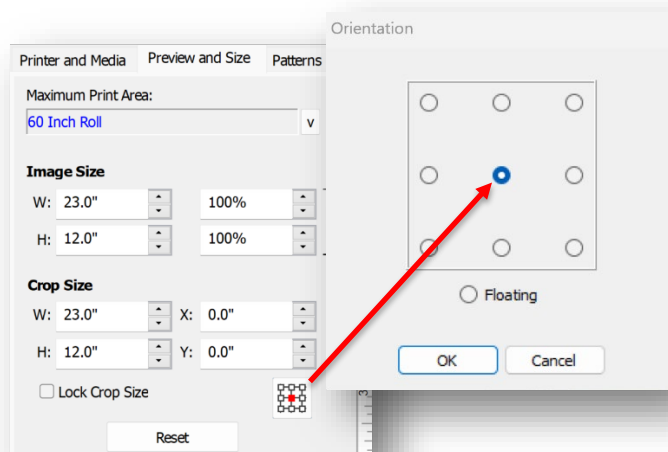
- **Hot Folder Delay**

- Added feature to delay file grab from Hot Folders to ensure files are fully saved before being added to the RIP Queue.
- Delay can be changed from zero to ten seconds in the General Settings.



- **Crop Orientation Indicator**

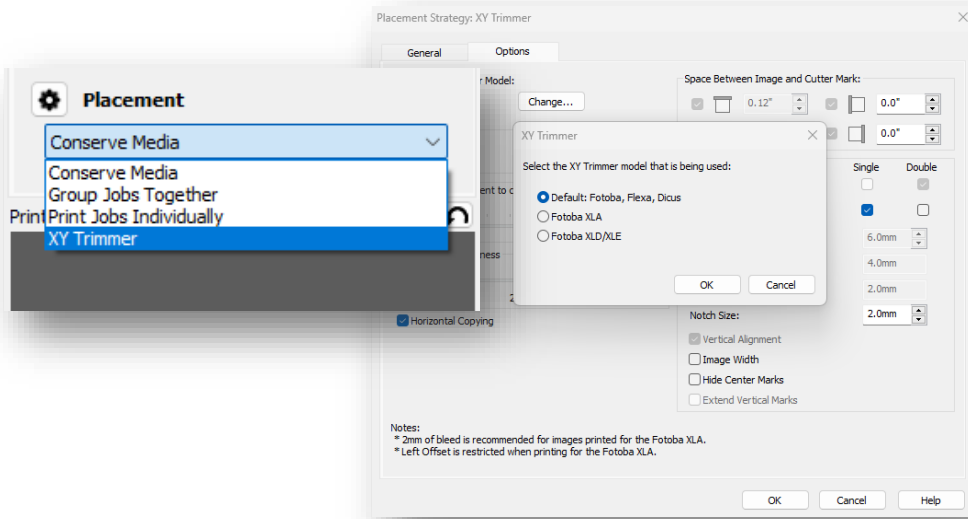
- The Crop Orientation tool in Job Editor now indicates your selection.



- **XY Trimmers**

- The naming in the "Placement" options has been updated from "Fotoba, Dicus, or Flexa Marks" to "XY Trimmer."

- Updates have been made to Fotoba marks.



- **Enhanced Database Performance**
 - Duplicate entry of port values is now prevented to avoid conflicts that cause crashing.
- **Updates for improved language translations. This involves:**
 - Japanese OS PrnInst conflicts resolved.
 - Japanese OS text on the EULA page corrected.
 - Corrected French, German, and Spanish OS values in RIP Queue for size, scale, and bleed.
- **Color Updates**
 - Corrections to color output using “Step & Repeat” and “Process to allow rotation.”
 - Embedded profiles for TIFF files are applied correctly when “apply embedded profiles” is turned on.
- **Restored selection of multiple jobs in RIP Queue and Job Archive.**
- **Printer Installer updated.**
- **Adjustment to Tile Overlaps when “Flip every other Tile” is used.**
- **Trim box registration points reverted to cutting clockwise.**
- **Auto-rotated jobs should also rotate the cut file.**
- **Updates to resolve Switch configurator and Dashboard communication issues.**
- **Additional improvements to enhance performance and stability.**

ONYX 22 Release Notes

- **Simplified Printer Installation, Backup, and Update Process.**
 - Install printers from within RIP-Queue. *Image 1-A*

- Printers created with localized names in version 21 or older must be imported into version 22 with the same operating system region and language settings.
 - The printer appears automatically after downloading the driver.
 - Printer driver version warning when a newer driver is available.
 - The current driver versions and newest versions are listed in Printer Manager.
- Image 1-B*
- One-click updates when newer driver versions are available. *Image 1-C*
 - Bidirectional printers will show the newest version available but must be updated outside of this application.
 - Backups of printers and media profiles are created during upgrades and uninstallation. *Image 1-D*
 - The New Printer dialog now links to Printer Manager. *Image 1-E*

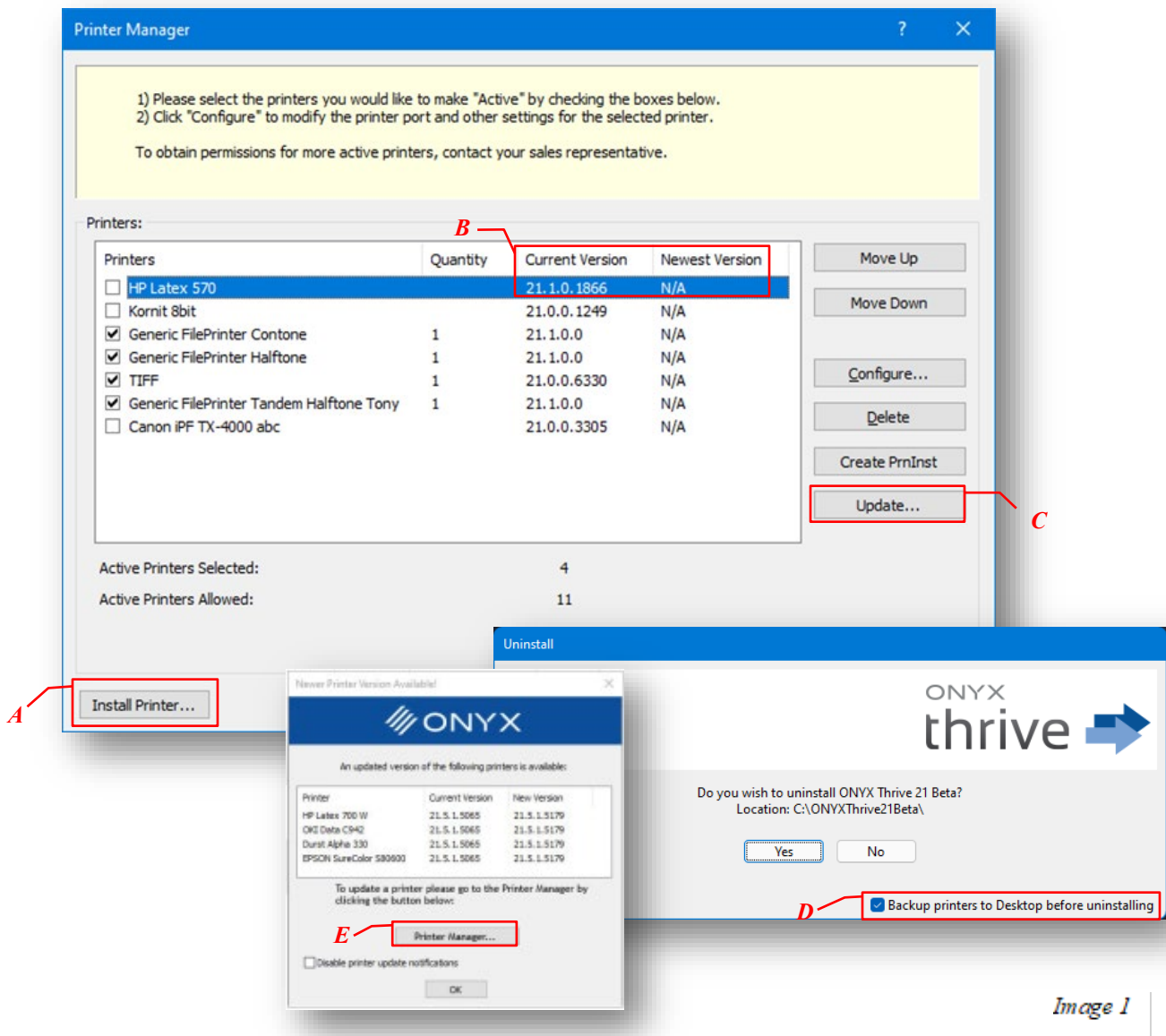


Image 1

- **Drag and Drop User Functionality in RIP-Queue**
 - Image files can now be dragged from Windows File Explorer and dropped into RIP-Queue.
 - After dropping files onto the queue, a settings window will be displayed that has

- options to apply to the image, such as Quick Sets, sizing rules, etc. *Image 2-A*
- Drag and Drop Input Tab added to Print Preview and Console Tab. A Quick Set tab has been added to the bottom-right corner of RIP Queue. A combo box allows for selecting a Quick Set for the current printer. Images can be dragged from an Explorer window and dropped onto the tab. These files will be opened with the selected Quick Set. *Image 2-B*

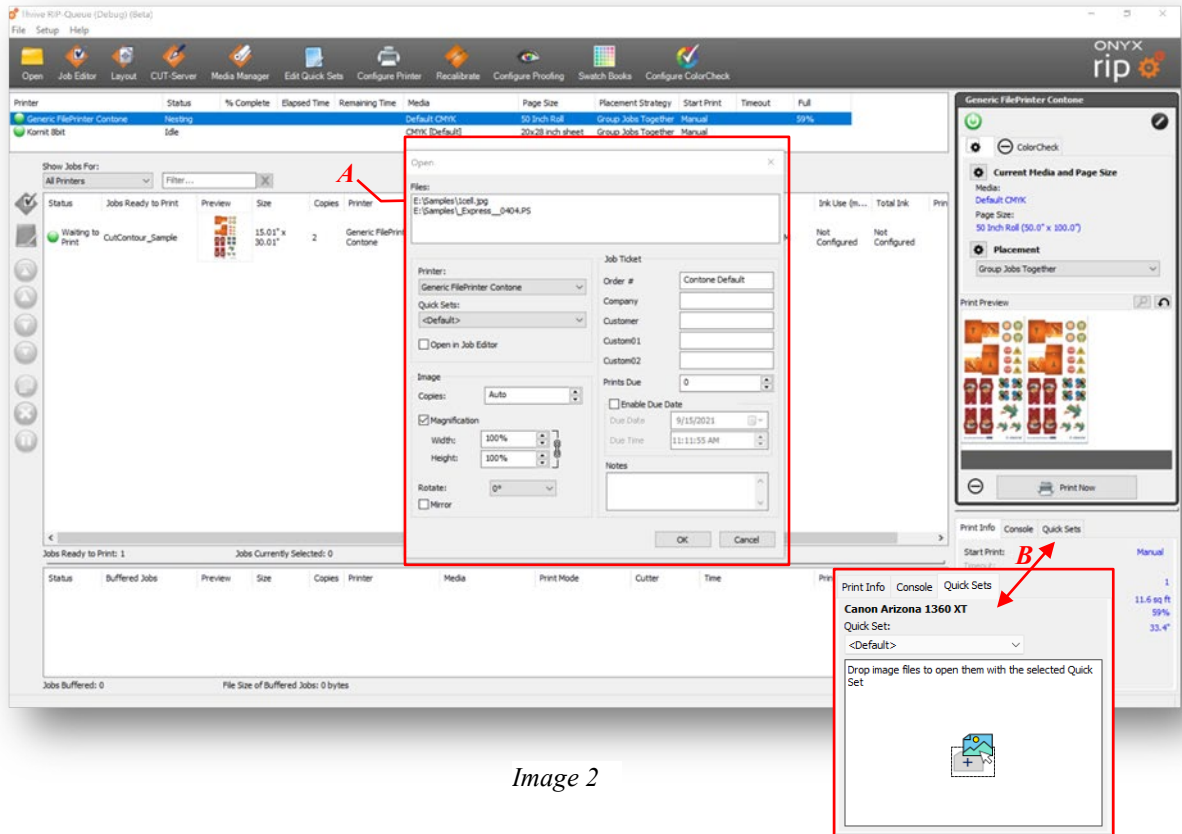
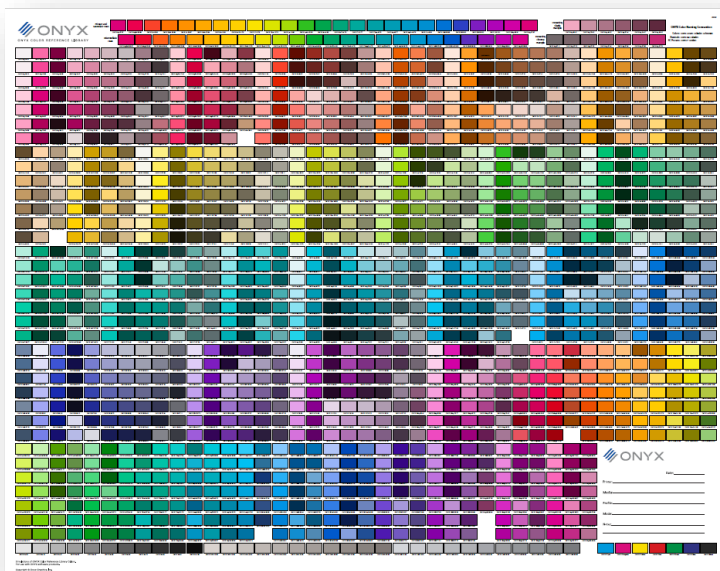


Image 2

- **ONYX Color Reference System**
 - ONYX Swatch library to assist in making color choices and setting expectations with customers.
 - ASE Color Library for ADOBE Illustrator.
 - XML Color Library for CorelDraw
 - Poster and Booklet for printable color reference.
 - Ability to print "Validated" ONYX Color Reference Library posters/booklets.

- Available in Samples Folder with PDF Guide.

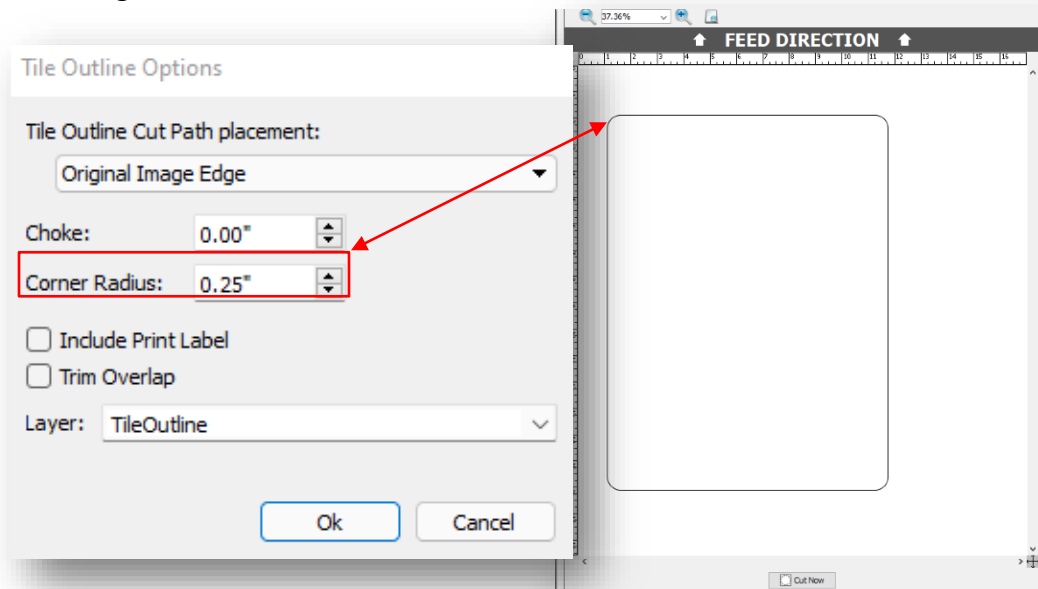


- **Smart File Name Job Submission**

- Metadata can be added to image file names. Any metadata in the file name will be applied to the job when the image is opened. Metadata in the filename has a higher priority than the Quick Set used to open the job.
- The following metadata is supported:
 - Copies (range 1 to 9999)
 - Magnification (range 1 to 10,000, in percentage)
 - Rotation (0, 90, 180, 270)
 - Order Number
 - Company Name
 - Customer Name
- Metadata in the file name begins with the string "_#JMD#_". The metadata options follow this token and are separated by semicolons. The metadata in the file name needs to follow the order listed above. If a particular item isn't required, then leave it blank.
- Examples:
 - Wine & Cheese_#JMD#_5.tif
 - This will open the file with five copies.
 - Wine & Cheese_#JMD#_5;110;90;;ABC Printing.tif
 - This will open the file with five copies, 110% magnification, 90 degrees rotation, and 'ABC Printing' as the customer's name. Notice that the Order Number and Company Name are left blank.

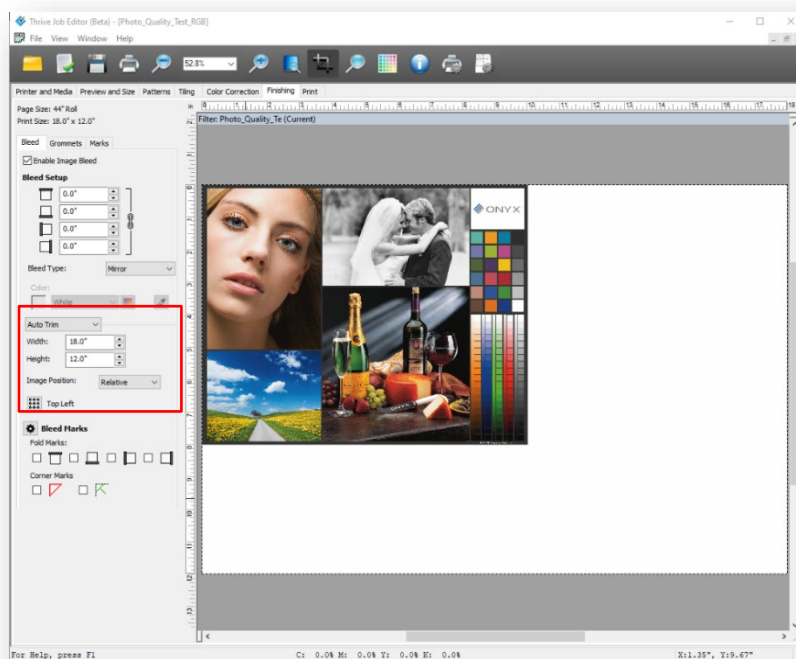
- **Corner Radius Controls for Tile Outline Cut Path**

- By default, tile outline cut paths are rectangles. The corners of these rectangles can now be rounded by specifying a "Corner Radius" in the Tile Outline Options dialog.



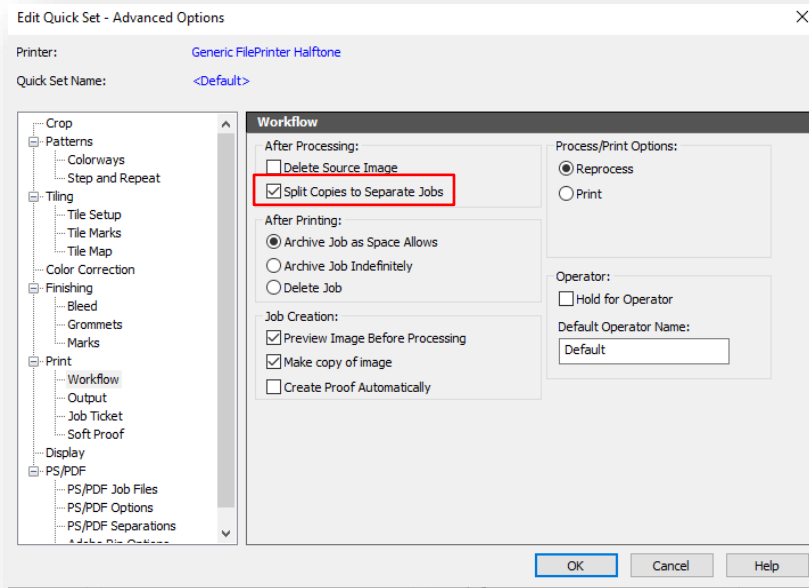
- **Enhanced tools for Nesting Control**

- An Auto Trim feature has been added to Quick Sets, Job Properties, and Job Editor. When Bleed is enabled for a job, the trim can be specified as "Manual" (the default) or "Auto." When Auto Trim is chosen, the job width and height can be selected to create the material size (white space), and the image position can be specified. This helps place images in specific nested positions, such as when

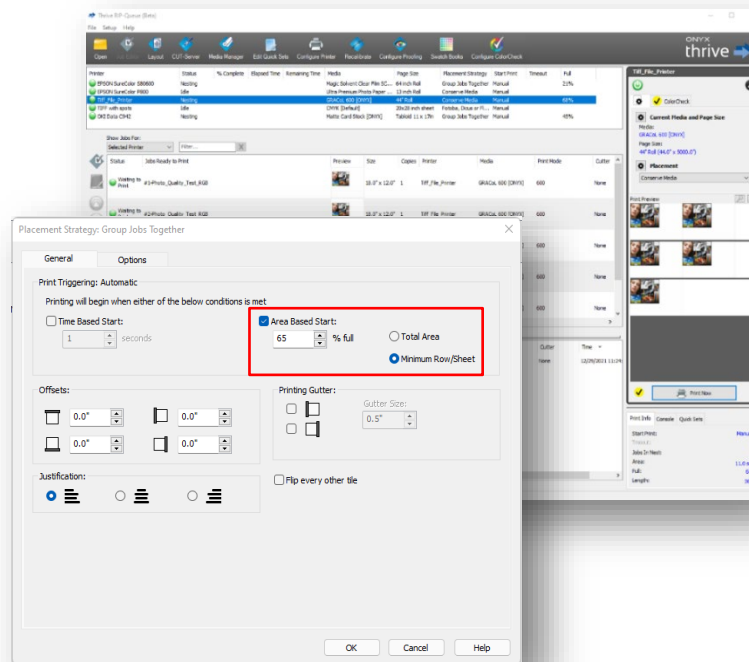


using a jig.

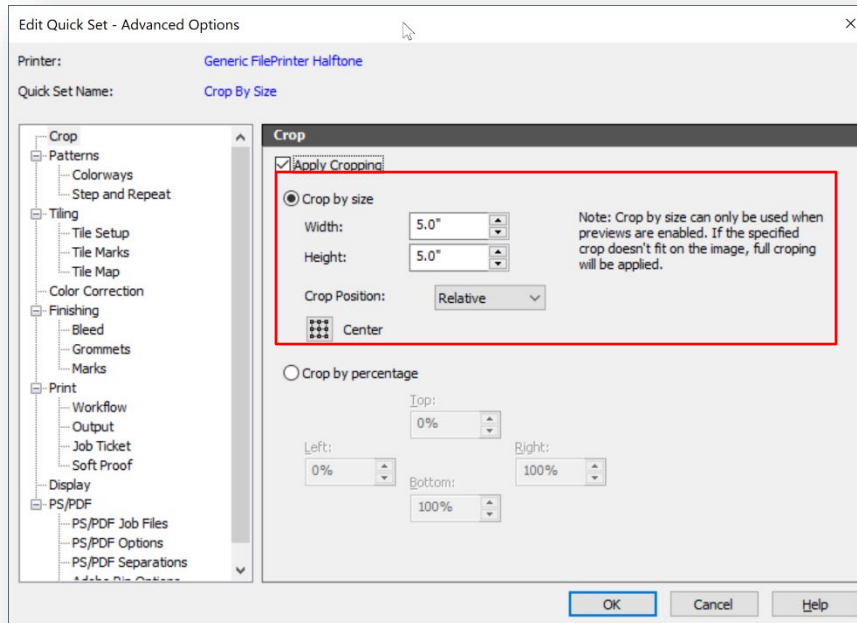
- When opening a job with multiple copies of itself, you now have the option to split that job with multiple copies into individual jobs for those copies. The option is available in Job Editor, Quick Sets, and Job Properties.



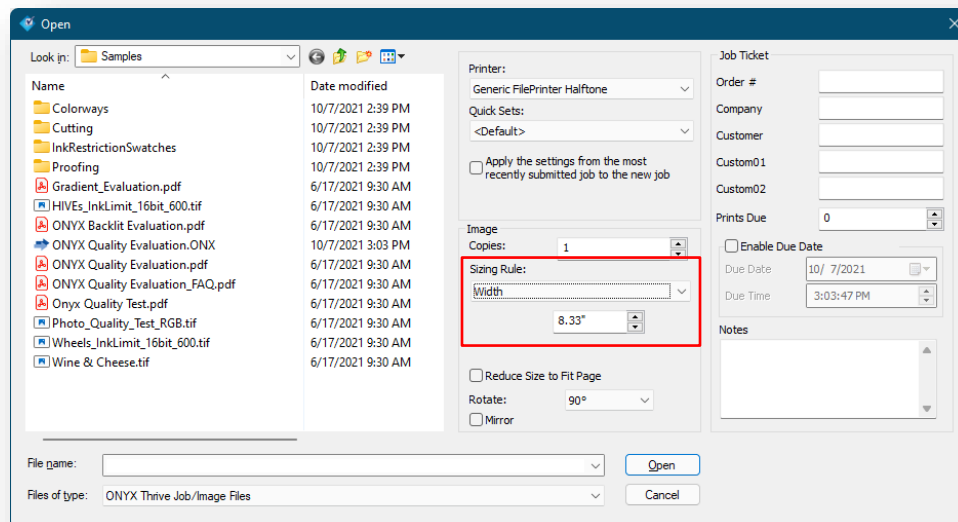
- Area-based print triggering controls for flatbed printing workflow automation. Use in combination with Split Copies to print jobs automatically based on percent full.



- Quick Set image cropping by size. Previously, cropping was done by setting the percentage of the image's top, bottom, left, and right sides to crop. Now, cropping can also be specified by setting the crop size and either an offset from the top-left corner of the image or a relative position within the image.

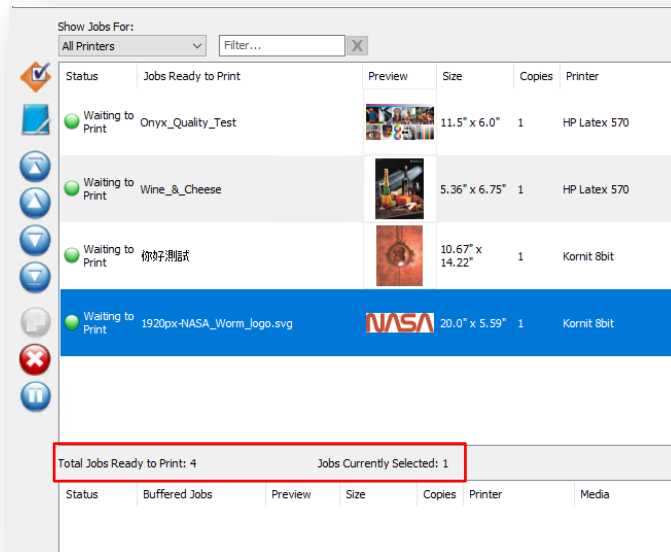


- Sizing Rules added to File Open window. Can now select from Image Size, Width, Height, Pixel Based Magnify, or Define by Quickset when opening a job in RIP-Queue or Job Editor.



- **Job Counter**

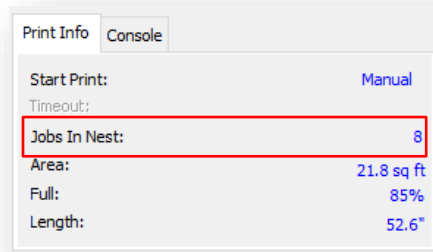
- Displays the total number of jobs ready to print for the selected queue. The number of currently selected jobs is also shown.



- Displays the total number of buffered jobs for the selected printer queue. The total file size of the buffered jobs is shown as well. If the file size of the buffered jobs is more than 10% of the entire disk space, then the percentage of disk space used by the buffered jobs is also displayed.

Status	Buffered Jobs	Preview	Size	Copies	Media	Print Mode	Cu...	File Size	Time
Archive	ONYX_Quality_Evaluation		87.5" x 115.0"	1	Default	720 dpi, Stochastic	None	832.5 M	8/12/2021 9:59:32 AM
Archive	ONYX_Backdit_Evaluation		96.25" x 126.5"	1	Default	720 dpi, Stochastic	None	1.0 G	8/12/2021 10:02:38 AM
Archive	ONYX_Backdit_Evaluation~1		96.25" x 126.5"	1	Default	720 dpi, Stochastic	None	1.0 G	8/12/2021 10:07:10 AM
Archive	Onyx_Quality_Test		72.0" x 138.0"	1	Default	720 dpi, Stochastic	None	889.9 M	8/12/2021 10:07:33 AM
Archive	HIVEs_InkLimit_16bit_600		57.5" x 130.0"	1	Default	720 dpi, Stochastic	None	615.9 M	8/12/2021 10:10:42 AM
Archive	ONYX_Backdit_Evaluation~2		105.0" x 138.0"	1	Default	720 dpi, Stochastic	None	1.2 G	8/12/2021 10:14:31 AM
Archive	Wine_& Cheese		85.8" x 108.08"	1	Default	720 dpi, Stochastic	None	1.6 G	8/12/2021 10:17:02 AM
Archive	Wheels_InkLimit_16bit_600		74.75" x 169.0"	1	Default	720 dpi, Stochastic	None	662.7 M	8/12/2021 10:18:19 AM
Archive	테스트_파일		87.5" x 115.0"	1	Default	720 dpi, Stochastic	None	876.1 M	8/12/2021 10:19:05 AM
Jobs Buffered: 9		File Size of Buffered Jobs: 8.5 G			Disk Space Used by Buffered Jobs: 11.61%				

- Displays the count of jobs in the nest for the currently selected printer.



- **G7 Calibration Without Profiling**

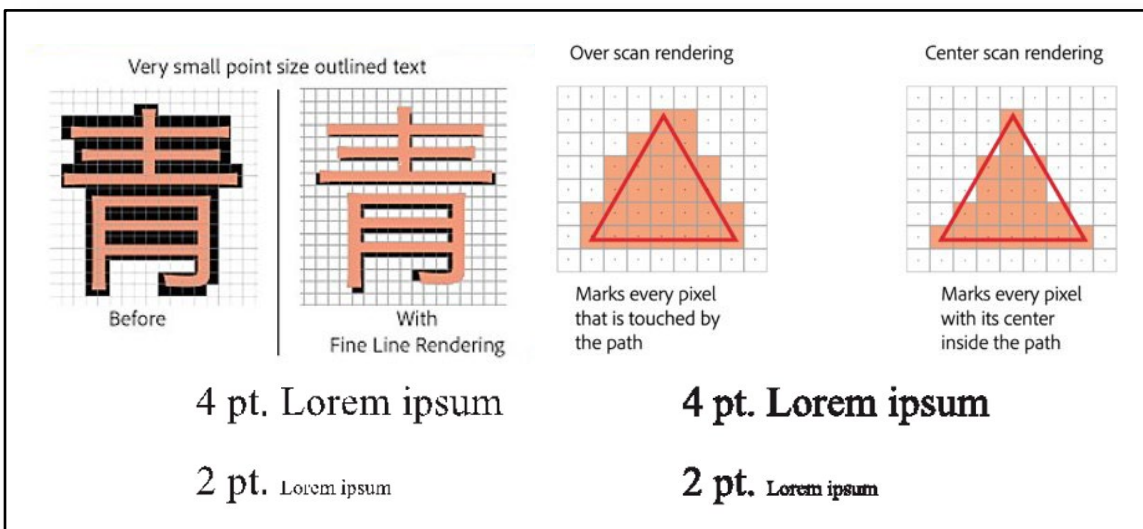
- Just as in Media Manager, an iterative G7 correction curve can be applied through ColorCheck if a G7 P2P swatch is printed and measured with no color management (the G7 Grayscale workflow).
- An Apply Update button will be visible in the initial report after measuring the swatch. Clicking the button will apply an iterative G7 calibration curve to the mode.
- A "G7 Correction Check" swatch is now installed and can be used to check how well the calibration/correction achieved the G7 aims.

- **D65 Light Source Measuring for Textile Printing**

- When building or editing an ICC profile in media manager, profiles can now be created using a D65 illuminant with the Standard 10-degree observer by selecting the option in the Build Options window for ICC profiles.
- Color Management according to textile industry standards.

- **APPE Update**

- Using the latest Adobe PDF Print Engine - APPE 5.7.
- Fine line rendering for a lighter and cleaner appearance.
- Greater clarity of small point size text that has been outlined.



- **Additional Updates**
 - C:// default install location with the option to choose an alternate location.
 - Unique ICC profile name.
 - Fotoba updates. Improvements were made for length adjustment and better alignment. XLA Barcodes are no longer included with resolution adjustments.
 - Rip Queue Shut Down warning only shows when jobs are processing or printing.
 - The print mode is added to the printed job log.
 - The database default port value can now be changed in the General Settings dialog.
 - When generating a soft proof from a multi-page PDF, the option to soft proof all the pages in that multi-page PDF is now available.
 - Base linearization and calibration process added for existing CMYK contone modes.
 - Custom color controls for Grommets. The default color is white.
 - RIP-Queue's General Settings dialog UI has been updated to make it more consistent with other settings dialogs.
 - Changes to underlying architecture to allow for better flexibility and easier maintenance. Now allows for configuring printers without shutting everything down and for “printing as groups.”

- **New color devices.**
 - MYIRO-1 With Wi-Fi Connectivity Support. Updated information on how to set up WiFi Support has been added. Port options are not required for this device.
 - Barbieri Spectro LFPqb Textile Edition.

ONYX Version 22.5 Cutter Release Notes

Application – Device Related Updates & Enhancements:

RIP-Queue :

- Addition of cutter marks to print previews for numerous cutter devices.
- Optimization of cutter settings persistence with relocation to /DB/Cutters folders for all devices.
- Updates to cutter mark generation for POSTNET/Code39 and QR barcodes with non-square print resolutions.

CUT-Server:

- Optimization of cutter settings persistence with relocation to /DB/Cutters folders for all devices.
-

- Connectivity updates for supported Mimaki print/cut and cut-only devices via USB and TCPIP

Layout Tool:

- Vertical Barcode support added for corresponding cutters (Summa F-Series, Kongsberg iPC, etc.)

Device - Additions/Changes/Fixes:

Note: All cutter device fixes from Onyx 22.0.2 that were previously supplemented by cutter patches are included with this release

ARISTO:

- UPDATE: Rotation option to Aristo Cutter dialog

COLEX:

- FIX: Correction of QR code generation with non-square print resolutions
- FIX: Restored Colex SharpCut device to selection list

COMAGRAV:

- FIX: Corrections to cutter marks direction mark positioning
- FIX: Corrections to cutter marks distances when paneling

CUTWORX DIGITAL:

- UPDATE: Device renamed per OEM from CWT Apex Cutter to CUTWORX Digital Cutters

ESKO:

- UPDATE: Previous ESKO/Kongsberg devices have been migrated to Kongsberg as OEM

EUROSYSTEMS:

OptiScout 2 cutter

- UPDATE: Added Material Thickness information to UI materials selection option
- FIX: Corrections for QR code distortions when printing with non-square resolutions
- FIX: Corrections for special character handling in XML output format

GENERIC_DXF:

- FIX: Correction for the issue of flattening curve paths when curves are supposed to be enabled
-

HP:*Latex Plus cutter*

- FIX: Removal of non-used USB connection option (not supported by OEM)

I-CUT:

- UPDATE: Added option to rotate jobs 180 degrees

KONGSBERG:*Kongsberg iPC cutter - NEW DEVICE*

- UPDATE: Barcodes and QR codes added
- UPDATE: USC marks added
- UPDATE: Kongsberg output format added
- UPDATE: Cutter was added Layout Tool
- UPDATE: Output files are now collected to .zip folder
- UPDATE: Added ability to move .zip output to designated location
- UPDATE: Translation of cut data points after rotation applied
- UPDATE: Cut Data is now rotated by default
- UPDATE: Changed associated cut job output name to .CGF
- UPDATE: Added barcode information to job ticket
- UPDATE: Cutter options UI made adaptive to barcode selections
- UPDATE: Added print preview of cut marks
- FIX: Simplification of material name in output file
- FIX: Correction for incorrect side barcode displayed in preview
- FIX: Correction for QR code clipping at output file edges

MIMAKI:*CGFX II Cutter*

- FIX: Removal of unsupported TCP/IP port option

ID_CUT devices

- UPDATE: Optimization of roll server functions when using the USB/TCPIP port types
- FIX: Corrections for ID CUT barcode distortions when printing with non-square resolutions
- FIX: Updated functions of roll server for ID_Cut devices to search for correct cutter names
- FIX: Updated functions of roll server to utilize correct ID_CUT cutter names

POSTNET:

- UPDATE: Adjustments to positioning of POSTNET barcodes, with certain resolutions
 - FIX: Corrections for POSTNET barcode distortions when printing with non-square resolutions
-

PROTEK:

- FIX: Adjustments to Image Margins for correct Mark placement

SINAJET:

- UPDATE: Addition of QR code generation

SUMMA:*S-Series*

- FIX: Adjustments for distorted marks at large Y margins
- FIX: Corrections for incorrect barcode generation at certain resolutions

S2 Series

- FIX: Correction for invalid instructions in cutter output files
- FIX: Correction for crashing issue when set to minimum Mark/Image Margin sizes
- FIX: Removal of extraneous OPOS type selection with default settings

S-One

- FIX: Removal of non-existent cutter model (not released by OEM)
- FIX: Correction for crashing issue when set to minimum Mark/Image Margin sizes

F-Series

- UPDATE: Added Material Match for use with Summa GoProduce
- UPDATE: Added Summa GoProduce output format
- UPDATE: Added print preview of associated cutter marks
- FIX: Adjustments to margin settings to prevent crashing issue
- FIX: Enhancements to cutter mark print preview to account for mark size increases
- FIX: Correction for invalid path detection, when using GoProduce Material Database import function

TROTEK:

- FIX: Adjustments to Image Margins for correct Mark placement
-

ONYX Version 22.0.2 Cutter Release Notes

ARISTO:

- Added rotation option to Aristo Cutter dialog

COLEX:

- Restored Colex SharpCut device to the selection list

COMAGRAV:

- Corrections to cutter marks distances when paneling

EUROSYSTEMS:

OptiScout 2 cutter

- Added Material Thickness information to the UI materials selection option
- Corrections for special character handling in the XML output format

GENERIC_DXF:

- Correction for the issue of flattening curve paths when curves are supposed to be enabled

HP:

Latex Plus cutter

- Removal of non-used USB connection option (not supported by OEM)

I-CUT Vision:

- Added option to rotate jobs 180 degrees

MIMAKI:

CGFX II Cutter

- Removal of unsupported TCP/IP port option

ID_CUT devices (UCJV150/300, CJV 300 Plus, CF22, CGFXII Plus, CJV 330, CG-AR)

- Updated functions of roll server for ID_Cut devices to search for correct cutter names
- Updated functions of roll server to utilize correct ID_CUT cutter name

PROTEK:

- Adjustments to Image Margins for correct mark placement

SUMMA:

S-Series

- Adjustments for distorted marks at large Y margins
- Corrections for incorrect barcode generation at certain resolutions

S2 Series

- Correction for invalid instructions in cutter output files
- Correction for crashing issue when set to minimum Mark/Image Margin sizes
- Removal of extraneous OPOS type selection with default settings

S-One

- Correction for crashing issue when set to minimum Mark/Image Margin sizes

F-Series

- Added Summa Go Produce
 - Material Match for use with Summa GoProduce
 - Added cutter marks to nesting preview
 - Adjustments to margin settings to prevent crashing issue.
 - Enhancements to cutter mark print preview to account for mark size increases
-

TROTEK:

- Adjustments to Image Margins for correct mark placement

KONIGSBERG:

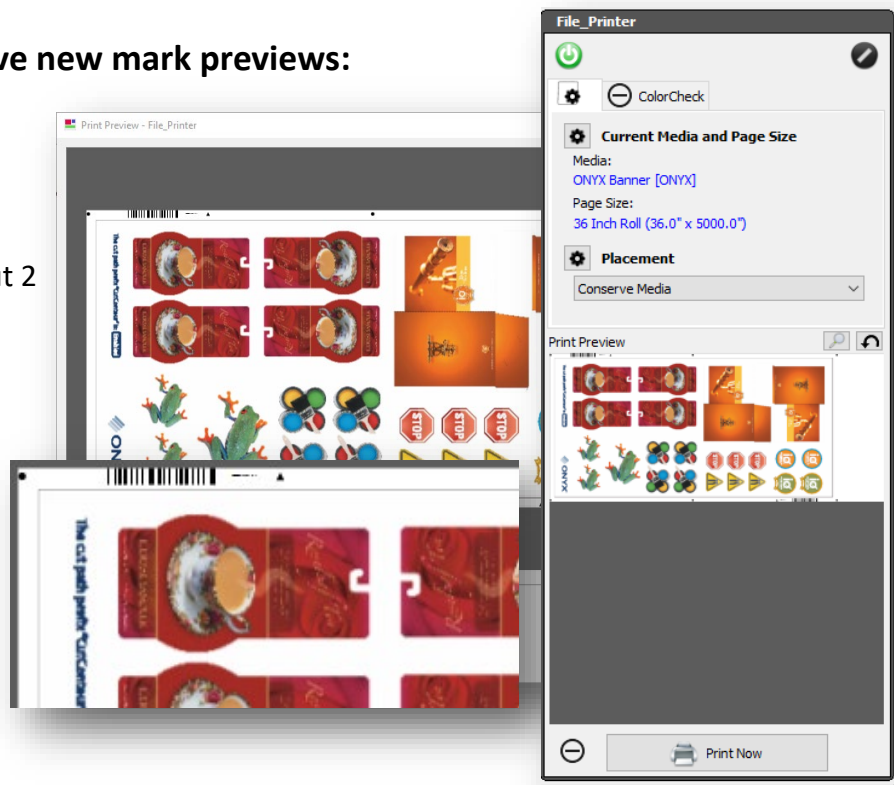
Kongsberg iPC cutter - NEW DEVICE (beta)

- Testing and evaluation are ongoing. Check with ONYX Technical Support for 22.0.2 updates related to this device.

ONYX 22 Cutter Release Notes

The following cutters have new mark previews:

- i-Cut
- MultiCam
- ZCC
- Eurosystems OptiScout 2
- Colex Sharpcut Pro
- Mimaki ID Cut Series
- HP Latex Plus
- Summa S One
- Summa S2
- Graphtec F9000
- Graphtec CE7000



COLEX:

SHARPCUT PRO

- New cutter devices added
- Added Print Preview Cutter Marks in Rip-Queue

EUROSYSTEMS:

OPTISCOUT

- Renamed OptiSCOUT cutter to "Eurosystems OptiScout" cutter
- Correction to XML output formatting
- Corrections to adjustment of Horizontal Registration Mark placement
- Fixed device name capitalization error in Cut-Server/Layout Tool
- Corrections to job output XML formatting restricting the use of invalid characters

OPTISCOUT 2

- New cutter device Added
 - Added Material Match functionality for Cut-Direct jobs
 - Added Support for the cutter in Layout Tool
 - Added Print Preview Cutter Marks in Rip-Queue
 - QR Code Rotated 180 Degrees to suit controller workflows
 - When using barcodes, cut rotation options are disabled.
 - When switching barcodes, related settings will change automatically
 - Added adjustable QR code sizes to suit device controller workflows
 - Generation of QR codes was enhanced to work with non-square print resolutions
 - Fixed Adjustment application of Horizontal Registration marks
 - Fixed issue with driver sending only the last Material Match used
 - Added Print Preview Cutter Marks in Rip-Queue

Generic DXF:

- Updated default output parameters

GRAPHTEC:

FC9000/CE7000 Series

- Drivers were optimized for accuracy of Intermediate mark detection using Data-Link
- Fixed UI for Roll Media selections, which now show correct options available
- Removed intermediate mark options for Roll Server - Pattern 1 due to accuracy issues.
 - Horizontal/Vertical/Both intermediate marks are an option with Roll Server - Pattern 2
- Removed segmentation correction option from CE7000, which this model does not support
- Added Cutter Device Option for generation of Large Barcodes in associated cut jobs.
- Added Connection Status (Stop Light) indicator for TCP/IP device connections in Cut-Server.
- Adjustments to Roll-Server connectivity to mitigate timeout conditions when using Device-Link.
- Added Print Preview Cutter Marks in Rip-Queue

I-CUT Vision:

- Fixed issue with Margin Settings adjustments / reset to default values
- Changed "I-Cut" cutter instance name to "i-cut Vision" *
- Updated I-Cut Marks and Barcode - added Direction Mark cutter option, correcting non-barcode workflows
- Updated No Barcode, with Text and Direction mark corrections *
- Added Print Preview Cutter Marks in Rip-Queue

MIMAKI:

CG FX Series

- Added "use device setting" option for cutter settings
-

ID_Cut Series Devices

- Introduction of ID_CUT barcodes on all sides to correlate with corner registration marks (Type1)
- Support for ID_CUT workflows on these Print/Cut devices: *CJV300plus, CJV330, and UCJV150/300*
- Support for ID_CUT workflows on these Cut-Only devices: *CF22, CG-FXII Plus, CG-AR*
- New MimakiTCP connection option has been added
- Added drivers to Layout Tool (Direct Cut only, No barcodes)
- Added Print Preview Cutter Marks in Rip-Queue

MULTICAM:

- Fixes for consistency of measurement unit used in output cut file.
- Added Print Preview Cutter Marks in Rip-Queue

PROTEK:

- Adjustments to the generation of Intermediate Registration Marks for Left/Right side placement

ROLAND:

VG / SG Series

- Correction of cutter device name in Cut-Server selection list
- Adjustments for correct second mark detection

RUK:

- New cutter device added

HP Latex Cutter Plus:

- Added Print Preview Cutter Marks in Rip-Queue
- Adjusted Cutter Mark sizes to prevent distortion of barcode with non-square resolution print modes **

SUMMA:

S2/S-One Series

- Added Supporting libraries for Summa S2 functionality
- Adjusted Y margin minimum value to correct value range
- Added Print Preview Cutter Marks in Rip-Queue **

F Series

- Adjustment of Intermediate Mark placement to suit Summa GoProduce workflows

VIVID:

VeloBlade

- New cutter device added
-

ZUND:

Touch & Cut

- Adjustments to Cut Job output for additional accuracy and registration mark detection

Zund Cut Center

- Added Print Preview Cutter Marks in Rip-Queue

New Devices:

COLEX	SharpCut Pro
EUROSYSTEMS	Optiscout 2
ROLAND	GR2 Series
RUK	RUK
VIVID	VeloBlade
Mimaki ID Cut*	Mimaki UCJV300 Mimaki CJV300 Plus Mimaki CJV330 Mimaki CF22 Mimaki CGFXII Plus Mimaki CG-AR