


This is an interactive landing page! Click on any of the links below to take you to a new location. Click the return icon at the bottom of each page to navigate back here: 

New Features and Improvements

Easy Multi-Layer Printing

Mark Updates

Nest Preview Updates

Label Placement Updates

Best Fit & Auto Rotate

Archive Updates

Named Color Replacement

Enhanced Spot Layer Generation

Other Color & Profiling Updates

Licensing

Layout Tool

Switch Apps

XY Trimmers

Cutter Specific Notes

New Samples

Post Release Micro-Updates

On Demand Webinars + Help us build our RIP!

24.0.3

Easy Multi-Layer Printing Workflow

Overview

Multi-Layer printing is a function that prints in multilayer layers, utilizing the features of UV ink. It allows new print styles that are not achievable with a single layer. In ONYX, users are now able to print multi-layer images in a seamless and intuitive way.

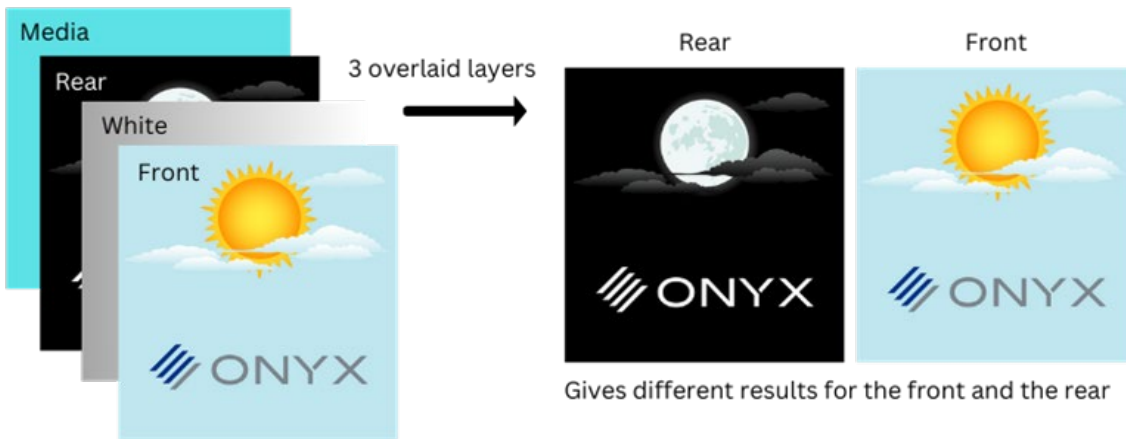
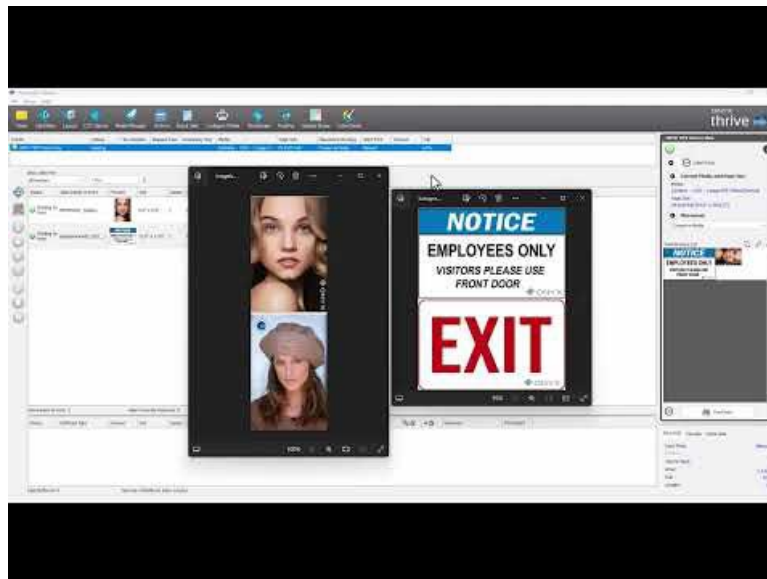


Figure 1 – 3 Layer Plus Media Print Example

Video



Getting started

Multi-Layer Setup Guide

*Multi-layer printing is a printer specific option and will only work with printers that are multi-layer capable.

***This guide is a general guide that may not be exact for your specific printer, more detailed instructions for specific printer setups are coming soon!**

Multi-Layer Features

- Multi-page PDFs can be used to specify layers in a single document.
- Individual TIFFs & PDFs can be combined to print as a one multilayer job.

The “Layers” icons on the left indicate whether the job is a single or multi-layer print.









Layers	Preview	Size
		20.0" x 14.43"
		12.0" x 7.33"
		19.34" x 13.9"

Figure 2 - Multi-Layer View In RIP

- Users can interact with the “print preview” user interface, which shows each individual layer up close.

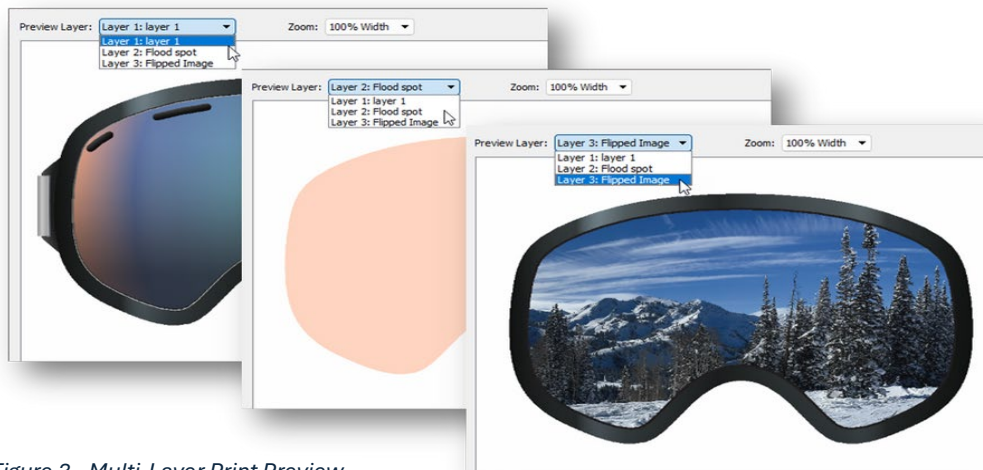


Figure 3 - Multi-Layer Print Preview



Tips and Tricks

- The tile setup selection and creation at process time only shows one page when the job is a multipage print.
- All print modes MUST be the same.
- When a multi-layer job is created from a single-page job, both “print using layers” and “print pages as layers” will be automatically enabled.
- Once individual print modes are combined, they cannot be altered.
- Jobs must have the same “print using layers” setting to properly nest together.
- Page numbers can be selected for image data in a Multilayer setup in Media Manager.
- Layers can be enforced to use the correct size.
- Multi-layer functionality works with cutting!

Technical and API Updates

- Changes to Quicksets, Job Editor, Job Properties, OEM job submission, API job submission, and JDF job submission.
- Consider printer limitations for pass definition.
- The multi-layer setup in media manager now allows the page number to be selected when printing layers.
- Printers will still need updates as needed for functionality to work properly.
- A new interleave pass printing mechanism supports printers that expect all data layers simultaneously.

Mark Updates

Overview

It can be difficult for cutters to recognize cut marks on dark, transparent, or reflective media types. Version 24 has two new features that make cutting on unique media types seamless.



Figure 4 – Flood Fill Behind Marks Example

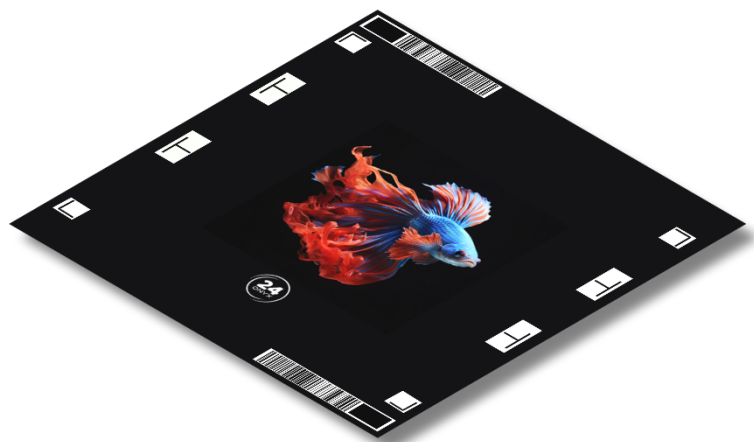


Figure 5 – Background Color Under Marks Example



Video



Flood Fill Behind Marks

- Floods the area around an image with a customizable spot color, enhancing mark visibility across all cutter types.

Background Color Under Marks

- Uses any ink color to create a footprint underneath each mark specific to your cutter, optimizing mark visibility while also saving ink and space. 'Flood Fill Behind Marks' gets the job done for any scenario, while 'Background Color Under Marks' is cost-effective and sustainable.
- This is a tailored solution that is specific to each cutter, it is currently available for the Graphtec FC9000 Driver.
- Future releases will include additional cutter functionality.

[Flood Fill + Background Under Marks Setup Guide](#)

Additional Mark Updates

- Option added to adjust the line pixel width of edge marks.



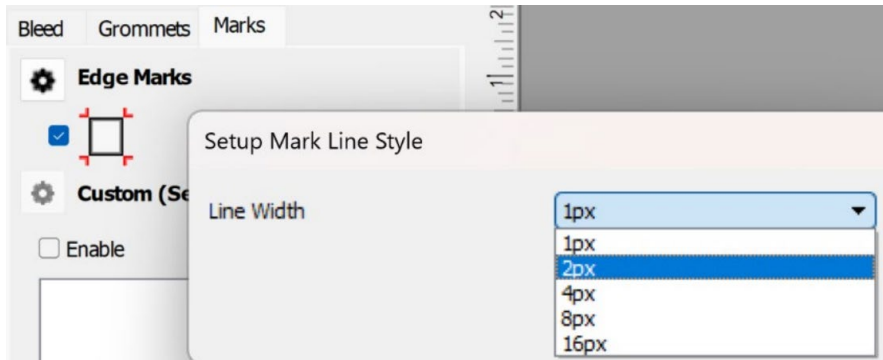


Figure 6 – Edge Marks in the RIP

- Fixed issue with grommet marks not printing with O (circle). All cases now print correctly.

Nest Preview Updates

Overview

In the previous versions the nest preview dialog was not adjustable. There is a new adjustable popup window that allows users to zoom in and out of a print preview.

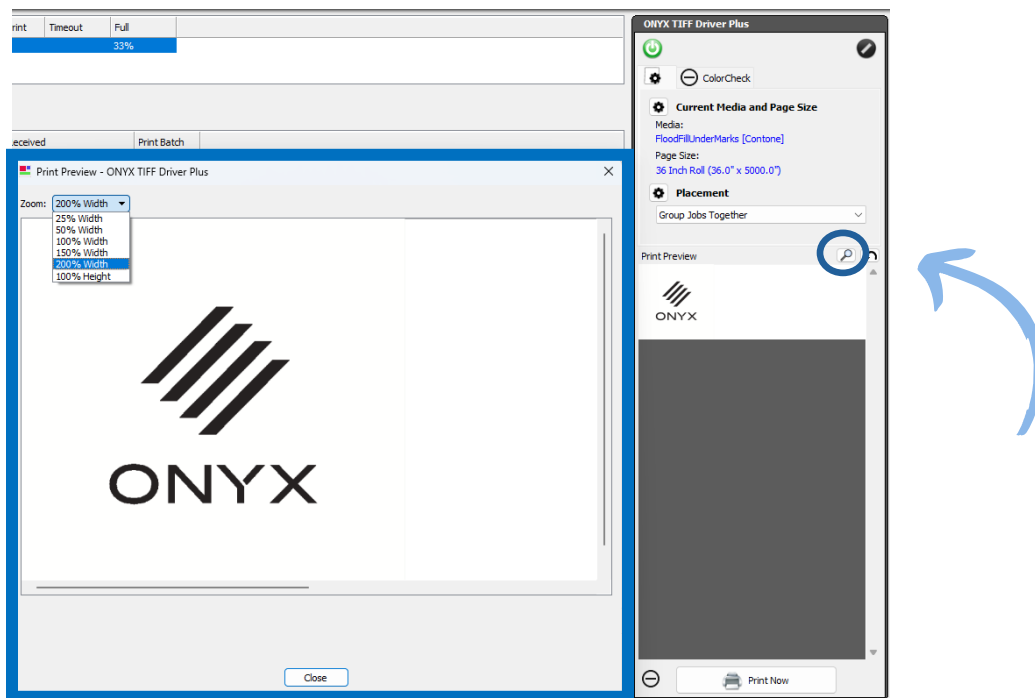


Figure 7 – Print Preview Popup

To utilize the Print Preview popup window, select the magnifying glass icon shown in the above image.

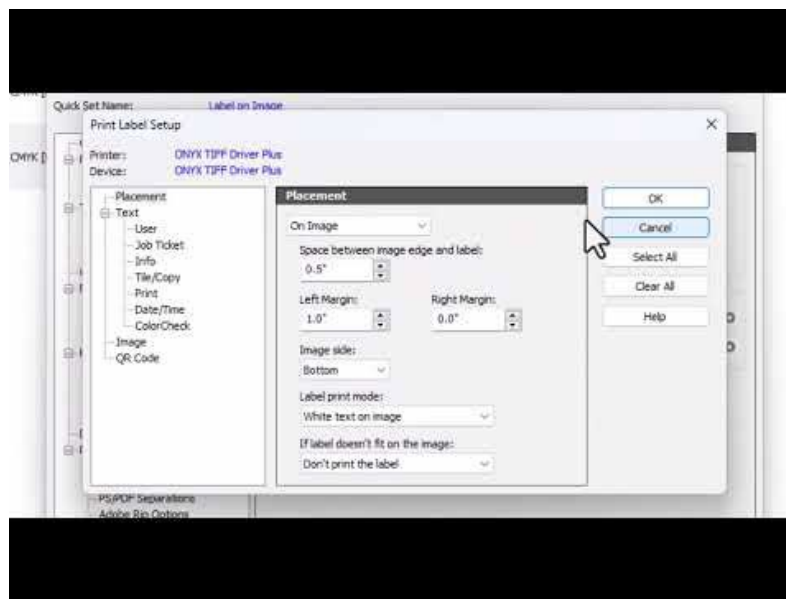


Label Placement Updates

Overview

Users are now able to customize their labels to go below, above and even on an image. This functionality is especially useful in the fine art industry, assembly style shops, photography labs and even for art buyers.

Video



Label Placement Features

- Labels can be placed above and below images while all marks are adjusted accordingly.
- Added a horizontal offset for labels.
 - The horizontal space between the image edge and label can be specified both above and below the image and when placed in the image and bleed area.
- Ability to add within the image or bleed area.
 - Label print mode can be specified: Black text on a white background, black text on an image or white text on an image.
 - Options for when the label doesn't fit on the image: don't print the label or move the label below the image.
- Additional QR code functionality



- Bounding box size and margin of a QR code can be defined for a job and printed correctly.
- The next preview displays the new placement option locations.
- ColorCheck job information can be configured for and displayed in print labels.

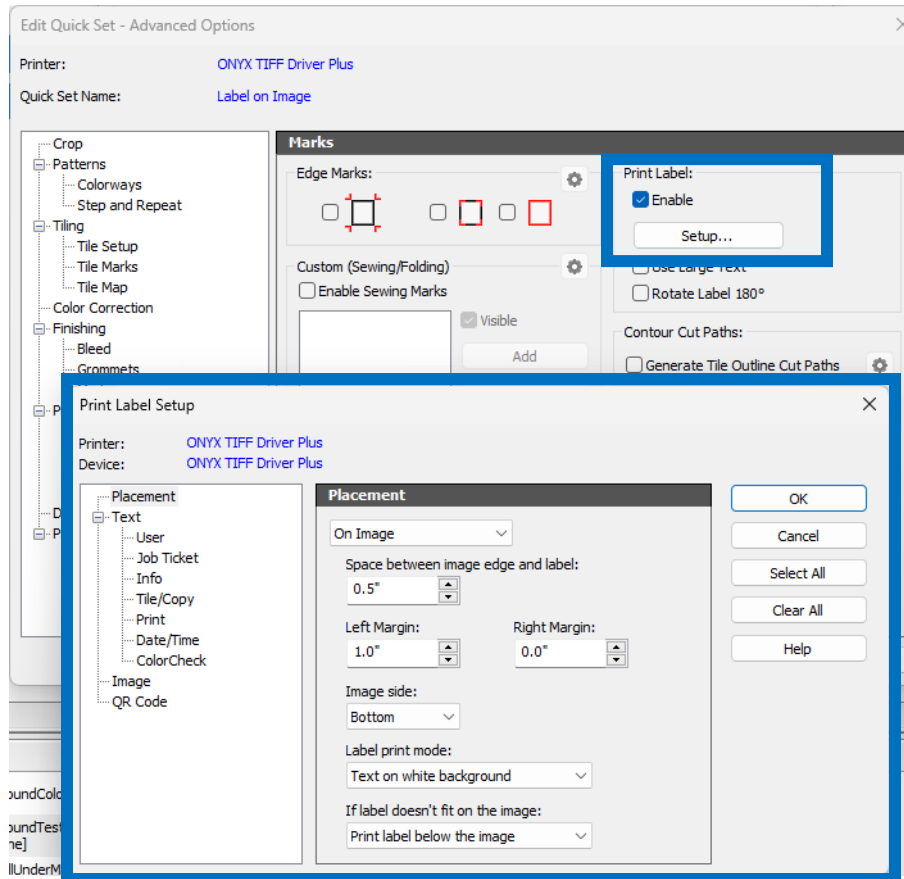


Figure 8 – Print Label Setup

Best Fit & Auto-Rotate

Overview

It has been a common user feedback about why best fit and allow-rotate works inconsistently.

Rotation With Non-Square Resolution

- Jobs with non-square resolutions are processed twice, allowing images to auto rotate when Best Fit is selected.
- This feature removes all previous bugs and inconsistencies in previous versions.



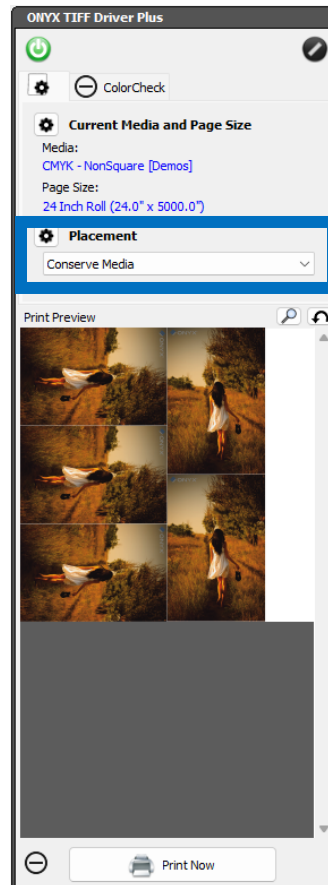
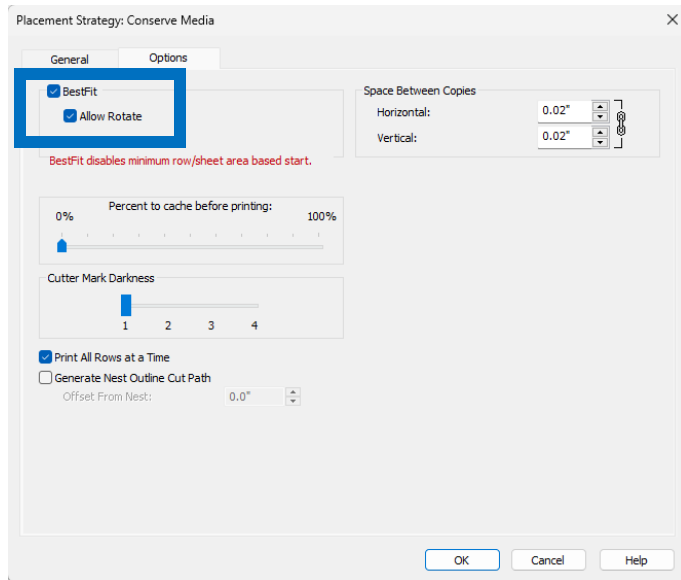


Figure 9 – BestFit & Allow Rotate Example

Click the cog icon near “Placement” and the “Placement Strategy: Conserve Media” popup will appear. Select the Option tab and you will be able to toggle “Best Fit” and “Allow Rotate” functionality.

Video



Archive

Overview

Continued development has been completed to add more functionality to the ONYX Archive Tool.

Video



Why ONYX Archive?

Efficiency + Reliability + Performance

Archive makes it simple to backup, search for, and restore buffered print jobs for future use!

www.onygfx.com



Archive Features

- Ability to save archive files to a network drive
 - Network drives can be used in the product if mapped using an admin Command Prompt
 - Different icon colors to differentiate between a local folder and a network folder

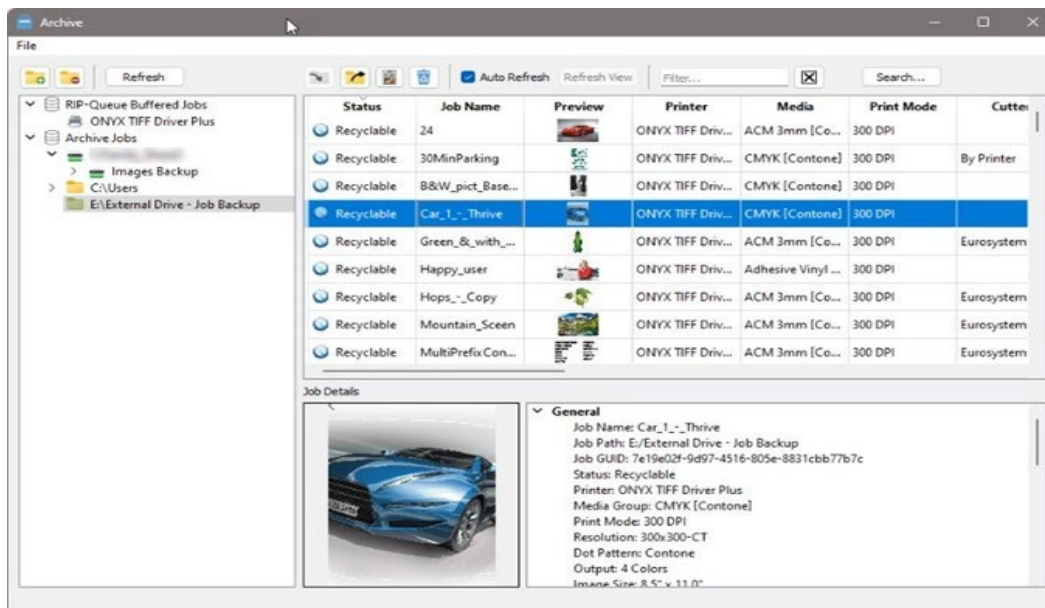


Figure 10 - Archive Home Screen



- Download Job Details as a PDF
 - Useful for shop records.
 - Fit all information for a job on a single page
 - Multi-select jobs can be included in the PDF.

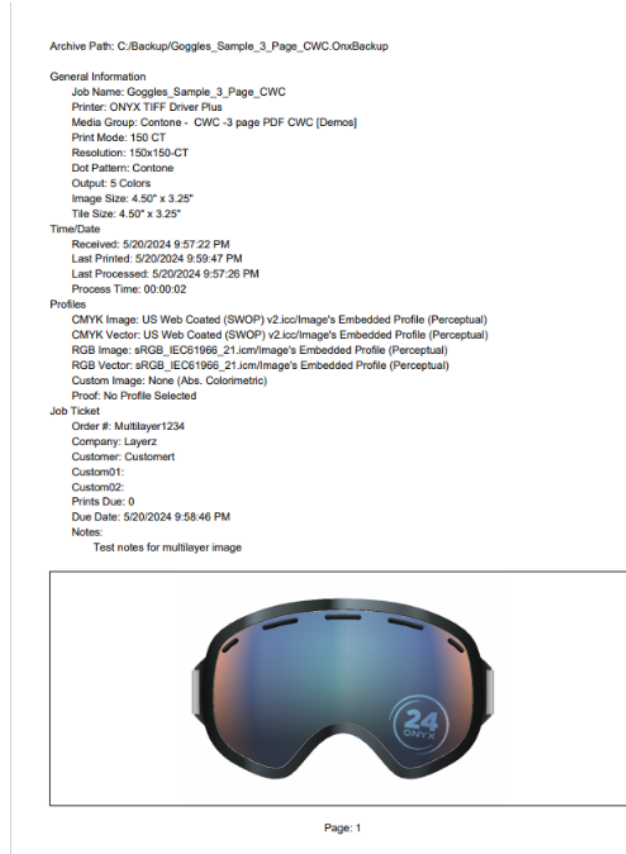


Figure 11 – Job details downloaded as a PDF

Technical and API Updates

- Can move files from any backup folders and /or active jobs list into other backup subfolders
- Drag and drop files to subfolders.
- Invalid Archive backup path can now be removed.
- Displays ColorCheck status information on jobs that have it available.
- The “Reset Searched” button now has a confirmation dialog.
- Clicking the delete key deleted the selected Archive jobs. This does not delete active RIP Queue Jobs.
- Actual numerical values sort column sorting for the non-text Size and Received columns.
- Resolved issue with multiple paths being opened to the same folder.



Named Color Replacement

Overview

Named Color Replacement is especially important on projects where brand consistency matters. Many users need it to create marketing materials, package designs, and print corporate signs. It's essential that every shade of blue, red, or green matched the specified brand guidelines perfectly.

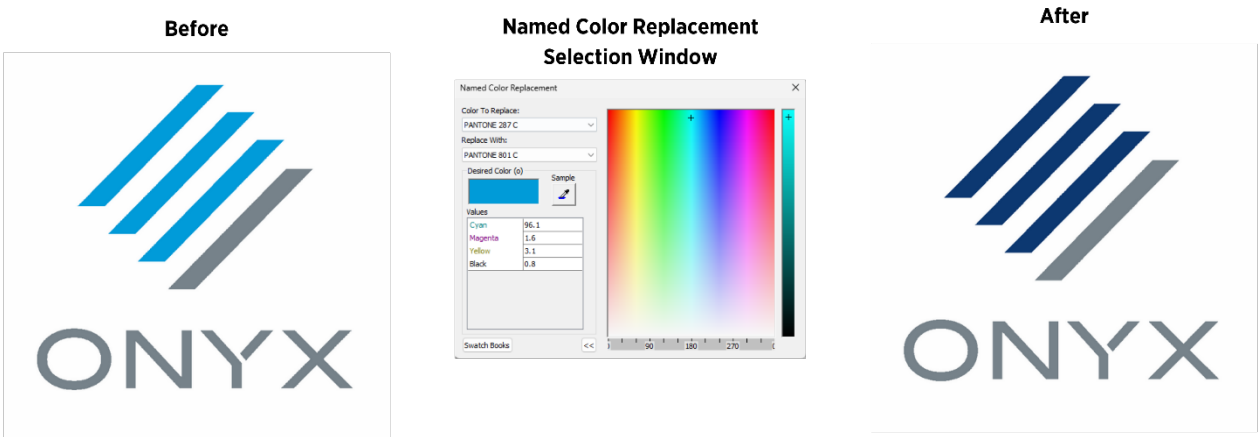
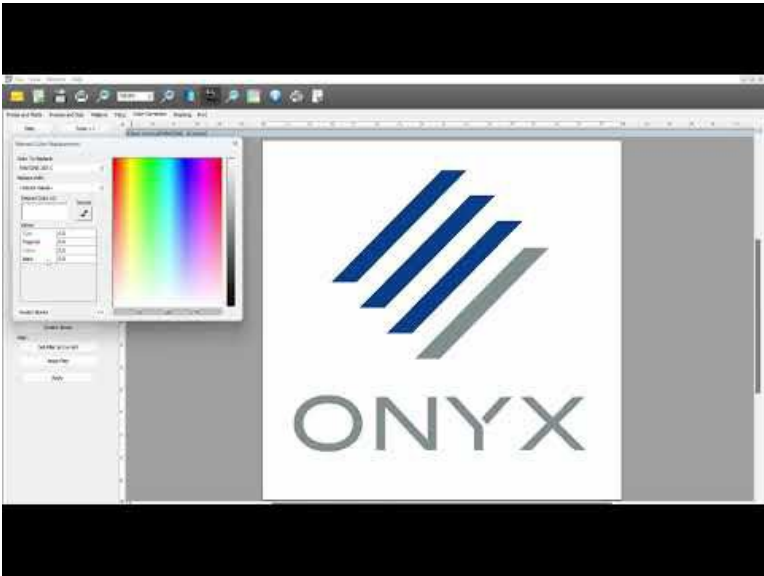


Figure 12 – Named Color Replacement window in ONYX

Video



Named Color Replacement Features

- Works in Job Editor and with Quickset Filters
- Documents that use named colors corresponding to the spot name in media are rendered using the spot color.
- Onyx Color Reference Library Integration: seamlessly works with the Onyx Color Reference Library for precise color matching
- Pantone Color Library Support: Utilizes the Pantone Color Library to ensure exact brand color reproduction.

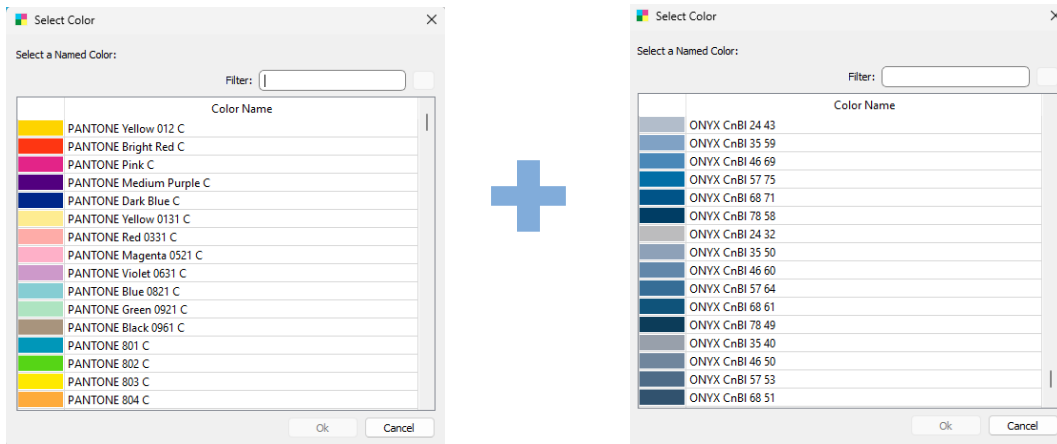


Figure 13 – Pantone + ONYX Color Library

Enhanced Spot Layer Generation

Overview

A new option to generate an automatic spot layer based on the transparency mask of a .PNG file. Advanced configuration to control the threshold of the amount of spot ink generated based on a percentage of the total in the original image. For example, when the image contains 100% total ink, 0% Spot ink will be applied to the auto-generated layer. If 0% (or a small amount) of total ink is in the image, 100% spot ink would be applied to the auto-generated layer.

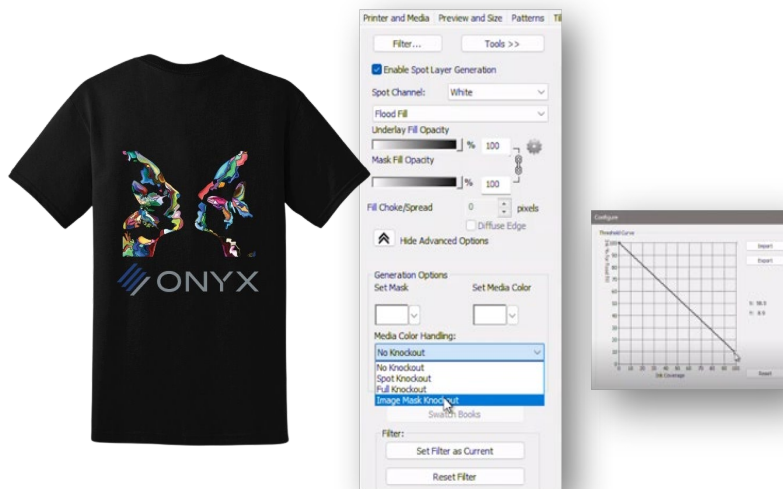


Figure 14 – Spot Layer Generation Example in the RIP



Enhanced Spot Layer Features

- Utilize the simple spot color knockout for PNG files with the transparency mask for DTG/DTF applications.
- Control spot layer coverage by setting custom ink volume curves for white and using other auto-generated spot in layers in relation to the original image.
- Save all color and spot layer generation settings as a color filter to use in a Quickset.

Nix

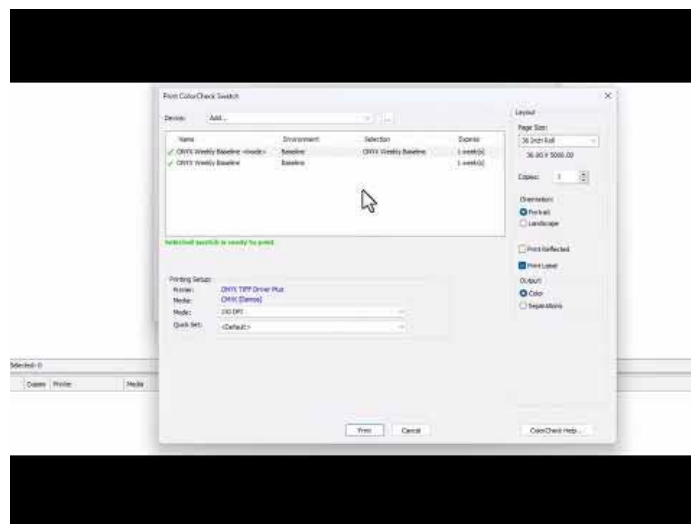
Overview

NIX Spectro 2/L were added as supported color devices. Additionally, support was added for the new NIX Spectro Library.



Figure 15 – NIX Spectrophotometer and the ONYX Weekly Baseline Swatch

Video



Tips and Tricks

- Calibrate only when the device recommends
- Requires Bluetooth 4.0+
- Users must open their ONYX RIP/Thrive first and use Media Manager or Swatch Books to connect with the device. DO NOT CONNECT TO WINDOWS BLUETOOTH FIRST. The device connections can be reset in the NIX phone app.

Other Color & Profiling Technical Updates

Swatch Books

- Spot channels are displayed and added to mode-named colors using Swatch Books measurement swatches.
- Linearization is applied to Swatch Book swatches. The output of PDF files (using a named color) matches the output of the swatch book for the same named color.
- Browsing to a different output profile will be used if a color matched to the same color space of the mode.

ColorCheck

- ColorCheck jobs will measure directly after printing for printers with embedded color devices that support Print and Scan.
- ColorCheck status is captured by jobs when they are processed and printed.
 - Very useful for jobs submitted with HUB/API for verification purposes.

Profiling Updates

- Media Models can be created directly using G7 calibration from the P2p51 swatch without a separate tool.
- Updated to version 2.2.3 of IccProfLib to include changes for iccMAX.2 (version 5.1 profiles)
- Multiple readings of different swatch prints can be measured and averaged. Supported initially with i1-IO devices.
- The “Process to allow rotation” during the print stage no longer causes a color shift and will output the correct Source Color.
- Ripping ink restriction swatches works as expected without crashing the RIP Queue.
- Advance swatch measurement of media models works correctly.
- Spot Channel Flood Fill is printed when selected in Swatch Books.
 - Works with Color Devices and Visual Swatch methods.

Color Libraries

- Updated RAL Color Values to Named Color Table. New colors appear in the System Named color list.



Licensing

Overview

With the addition of soft licensing, there has been a need to make the process easier to save users start-up time with upgrades and new installations. Updates will be made to ensure security, improved performance, and stability.

Licensing Feature Additions

- Able to activate a network license on a product initially installed by an SRM license. The "ONYX Network License Manager" is installed on activation.
- The License Manager and Network License Manager both refresh the license correctly.
- The Network License Manager is Uninstalled/Installed with License Deactivation/Activation.

Layout Tool

Overview

Updates to improve performance and resolve issues.

Technical Features

- Changed the maximum memory that can be used from 4GB to 8GB in the configuration dialog.
- Fixed ability to drag files into Layout Tool.
- Resolved issues with printing and cutting from the Layout tool.

Switch Apps

Overview

Enfocus Solution Partner has been providing integrations with Switch using one or more configurators. They will no longer support configurators and have changed to an App-based program. App based programs are more efficient and integrate more effectively with third-party applications.

Migration & Application Integration

- ONYX Switch Connect 3.0, and ONYX Switch Status 1.0 Apps were created in Q4'23 and are available on the Enfocus App Store.



- Updates to the Switch Apps have been completed, they are now functional with Mac and Windows OS with the release of ONYX Switch Connect 4.0 and ONYX Switch Status 2.0.
 - [ONYX Switch Connect | Enfocus](#)
 - [ONYX Switch Status | Enfocus](#)

XY Trimmers

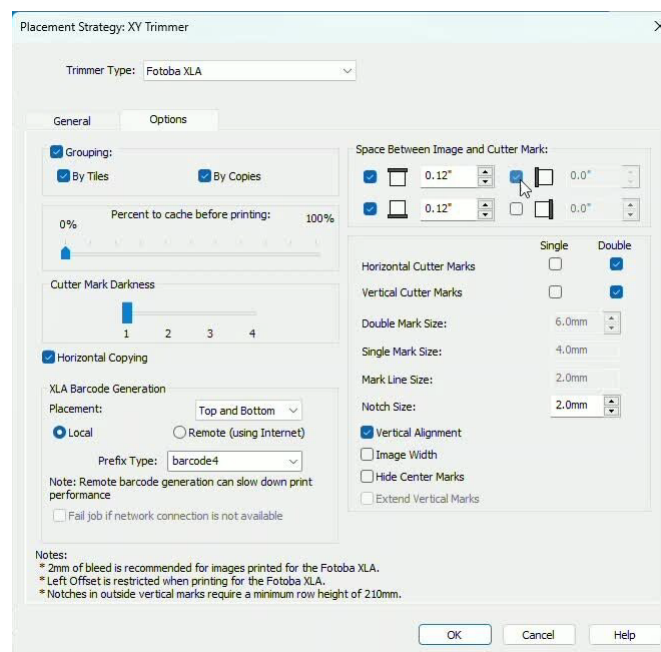
Overview

Continued improvements to the Fotoba XLA XY Trimmer and the addition of the new Mimaki XY Slitter.

Fotoba XLA Improvements

- Vertical Line Notch is placed correctly when "Image Width" is not selected.
- Barcode offsets are correct for where the image is placed relative to the center of the edge mark used.
- Fotoba Barcode placement is fixed correctly when the "Extend vertical mark" selection is enabled and disabled.
- "Space between Image and Cutmarks" options are unlocked, and users can independently enable and disable top, bottom, left, and right spaces.
- When sending two different jobs to print, only one set of horizontal cutmarks is printed between the jobs.
- Issues resolved with Fotoba XLA Invalid Barcode Generation

Video



Mimaki XY Slitter

- Mimaki XY Slitter added to XY Trimmer placement strategy.
- Option to print and cut now or print and cut later.
- Implemented workflow to use cutter marks on other printers to use the Mimaki XY Slitter with prints from other printers

Post Release Micro-Updates

Overview

Since our initial release in July, we have continued to update our software to fit our customers' needs. These micro-updates are so small they don't warrant a new release number. You can verify which update you have by checking the date on your executable file. Here are the instructions to see what date your software was last updated on:

[Version 24 Date Check Instructions](#)

If you would like to update your current version to include these micro-updates, navigate to onygfx.com and click our product download links to reinstall your product. You can then use upgrade/repair during the reinstall process and your version will be updated accordingly.

Micro-Update 1 (August 15th, 2024)

- Resolved an issue where large dots appeared in light-colored (low density) areas. Now, smaller dots are implemented, improving the overall print quality in those areas.
- Thrive installer was crashing on French operating systems before reaching the activation window. Softkey customers can now install Thrive without any issues in the French OS.
- Working with JDF files resulted in job creation errors. A new fix was pushed to address this problem.
- Fixed an issue where Media Manager would crash when trying to create new media without selecting anything from the library first. Now, you can create new media smoothly even if nothing is selected initially.
- Resolved an output justification issue with stop marks for KALA XY Trimmers.

Micro-Update 2 (September 24th, 2024)

- Resolved an issue where jobs would not group together when using XY Trimmers if image dimensions were different.
- If a print job had multiple sheets and had a cutter on the job, not all cut files were being made. When multiple cut files would work accordingly, they had the same barcode. Both issues have been resolved in this update.
- 10.1 RMS license server could be installed on one computer but not on another network computer. RMS license server is now working accordingly.
- The "vertical alignment" checkbox for Fotoba and XLA is now able to be toggled.



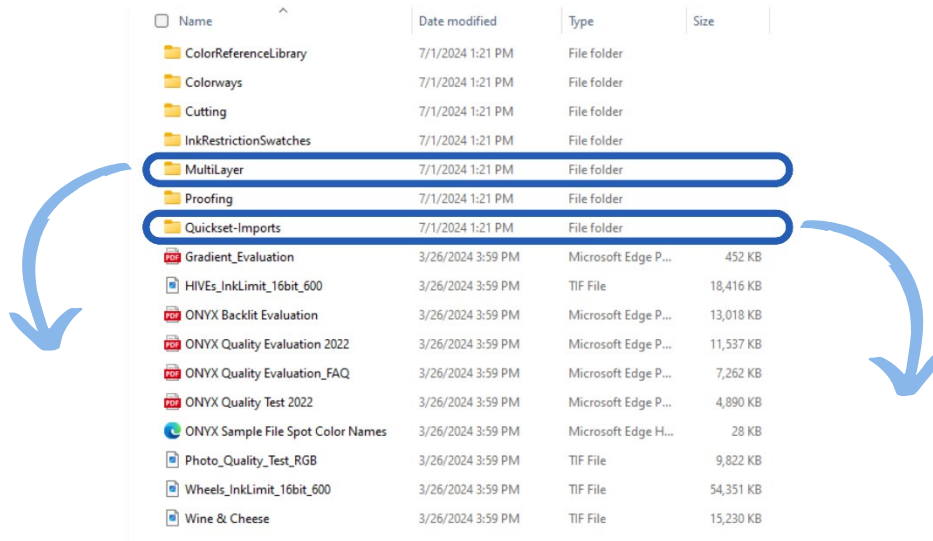
- Print event messages for nest and print states had print failures that would occur when using SRM key with Print Width set to 24”. Multiple images can now be printed if within print width maximum.

New Samples

Multi-Layer Images and Quicksets

When fancy new features are released it’s always helpful to have a starting point to start experimenting. Version 24 has added new files and folders to the Onyx sample folder in your download.

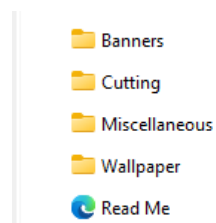
Navigate to your C drive, there you will find a folder called “ONYXThrive24”. Next, click on the “Samples” folder to get started.



Multilayer Folder Contents



Quickset Imports



Open the “Read Me” for instructions on how to import the premade Quicksets

Figure 16 – Multi-layer and Quickset samples



On Demand Webinars

At ONYX Graphics, we believe that continuous learning is key to staying ahead in the fast-paced world of digital printing. That's why we're excited to offer a comprehensive suite of **On-Demand Webinars and Learning Classes** designed to help you maximize your investment in ONYX software.

Why Choose ONYX Learning?

- **Flexibility:** Learn at your own pace, whenever and wherever you choose.
- **Expertise:** Gain insights from certified ONYX experts with hands-on industry experience.
- **Certification:** Earn certifications that demonstrate your proficiency and commitment to excellence.

Click here to access our learning zone ([ONYX Learning Zone](#))

Help us build our RIP!

Exciting News for ONYX Users!

We're thrilled to announce the launch of our new **Feedback Form!** Your insights and creativity have always been the driving force behind our software's evolution, and now, we're giving you a direct line to help shape its future.

How to Participate? Simply fill out the form with your suggestions, ideas, or any improvements you've been dreaming of. No matter how big or small, your input is invaluable to us.

Together, let's build software that not only meets but exceeds expectations.

Submit Your Feedback Here ([ONYX Feature Request Form](#))

Thank you for being an integral part of the ONYX family. We can't wait to see what we'll build with your feedback!



Version 24.0.3.6489 is a point release that addresses specific issues identified by our users. These fixes are crucial for improving the performance and reliability of our software. Each issue selected aligns with our point release process and will enhance the end user experience. We greatly appreciate the feedback from our users that helped us identify and resolve these issues!

RIP Queue Application Enhancements

Slow 180-Degree Rotation of PNG Files

Rotating a PNG file 180 degrees in RipQueue was significantly slower (taking a few minutes) compared to rotating it 90 or 270 degrees, which only took a few seconds.

The 180-degree rotation of PNG files has been optimized to reduce the processing time, ensuring it now matches the speed of 90 or 270-degree rotations.

RIP-Queue Crash with PNG Files Containing Multibyte Characters

RIP-Queue would crash with a heap corruption error when opening PNG files that contained multibyte characters (such as Chinese or Japanese) in the filename or path. This issue was specific to PNG files and did not affect other file types.

The issue has been resolved, and PNG files with multibyte characters in the name and/or path now open successfully without causing RIP-Queue to crash.

PNG File Resizing Issue with “Mirror” Option Enabled

When the "Mirror" option was enabled in the quickset, opening a PNG file would cause the image to resize unexpectedly.

The issue has been resolved, and PNG files no longer change size when using the mirror option.

Missing Trim Box Cut Lines on Multipage PDFs

When using the "Add PDF Trimbox to cut paths" option on a multipage PDF and separating the pages, only the outline for the first page was generated.

The issue has been resolved, and now all pages in a multipage PDF will have the trim box cut line generated correctly.



Incomplete Page Display for Multipage PDFs in RIP-Queue

When sending a multipage PDF job to RIP-Queue from the Layout Tool, not all pages were displayed. Specifically, only the first two pages were shown, while the third page was missing.

RIP-Queue now correctly displays all pages of a multipage PDF job sent from the Layout Tool.

Grouping Issue with X/Y Trimmer for Different Image Dimensions

Jobs did not group together when using the X/Y Trimmer if the image dimensions are different. This issue does not occur if the image dimensions are the same.

The issue has been resolved. Jobs with different image dimensions now group correctly when using the X/Y Trimmer, except for the Mimaki XY Slitter, which requires all jobs to be the same size.

Incorrect Print Size for Scaled Raster Images with Bleed

Raster images (JPG, TIFF, PNG) printed the wrong size when the image was scaled and a bleed was added. Specifically, the print would be wider than expected, and printing to file would result in an error message: "Media too narrow for non-rotatable and non-tiled image." This issue did not occur with PDF files.

Raster images now print at the correct size when scaled and a bleed is added, without causing errors or incorrect print dimensions.

Renaming "Basic Install" to "Cut-Server Only Install"

Customers were selecting the "Basic Install" option and were unaware that this option does not allow the use of RIP-Queue. Additionally, attempts to repair Onyx after using "Basic Install" necessitated a full uninstall and reinstall.

To improve customer experience, the "Basic Install" option in the installer has been renamed to "Cut-Server Only Install."

New X/Y Trimmer Line Item

Neolt was added as a new line item in our current X/Y trimmer dropdown.



Device Updates and Enhancements

Note: All cutter device fixes from Onyx 22.5.1 and 24.0.0 that were previously supplemented by cutter patches are included with this release.

Aristo

Aristo Cutter

Implemented user option for QR code output.

Colex

SharpCut Pro

Corrections for default path for Material Match selections.

CUTWORX Digital

Driver Additions

CUTWORX USA APEX Series drivers added

CUTWORX USA APEX Eclipse Series drivers added

Elitron

Elitron Cutters

Elitron xml output corrections

EuroSystems

OptiScout 2 Cutter

Non-square resolution registration mark corrections

GCC

Driver Additions

GCC Expert II driver added

GCC Puma IV driver added

GCC RX II driver added

GCC Cutters

Added user option for directional marks

Implementation of GCC Roll Server functionality

HP



Latex Plus Cutter

Corrections for cut path offsets when using HP Cutter Barcodes

HP Latex Plus Bezier Curve Not Plotting Correctly.

Jingwei

Jingwei Cutter

Corrected QR mismatch workflows.

Mimaki

ID Cut Device

Added Mimaki ID Cut series Layout mark options

Driver Additions

Mimaki CJV200 Cutter driver added

Mimaki CFX Cutter driver added

Roland

Driver Additions

Roland GR2 device (AAS2 Support)

Summa

Summa Cutters

Connectivity updated for use with latest Summa USB drivers for all supported devices

Implemented device connection stabilizations

Corrections for jobs having incomplete cut operations.

S3 Series

Summa S3 Tool command corrections

Correction for Cut-Server crash when Summa USB selection without valid connection

S One

Summa S-One cut path optimizations.

F Series

Summa F Series registration mark output corrections.



Zund

Implement modular barcode selections.

Added ability for driver to produce job bitmap or not.

Added printing directional mark as a user option.

Added RIP hot folder workflow option.

Implemented generation of barcodes on side of nest.

Allow margin-less prints based on barcode data selected.

Optimization of Image placement code.

Re-implemented position mark workflow for latest driver placement options.

Mark background area expanded on Code 39 barcodes.

Corrections for Margin-less workflow with undermarks enabled.

Undermark corrections on positioning mark.

Direct cut from ONYX to ZCC Cut Center correction.

ZCC has a functional user option to generate a large barcode and label.

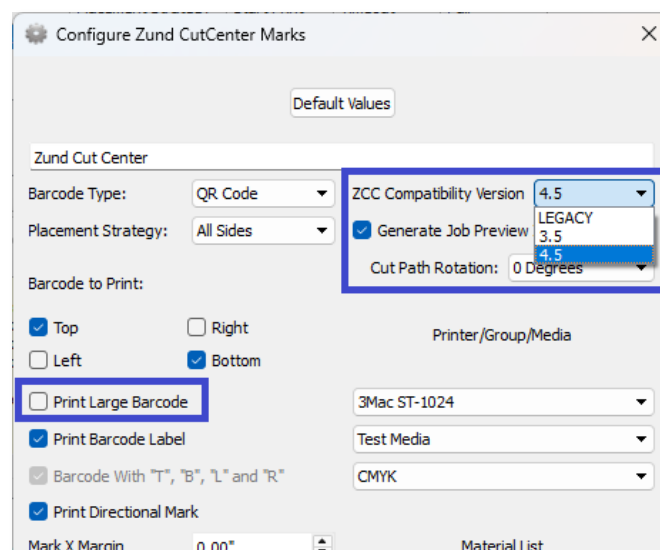
Margins are adjusted accordingly for new barcode size, no print time crashes occur with various mark and margin settings when using the large barcode option.

Preview reflects the new large barcode behavior.

Zund: New UI Functionality

Users can choose their compatibility version from the following choices:

- Legacy
- 3.5
- 4.5



Specific QR Code functionality in Onyx is only available for Zund versions 4.4.5 and above.



The version 3.5 selection on the ZCC compatibility can successfully send jobs to the ZCC 3.5 Cut Center.

Submitted jobs with 3.5 ONYX compatibly selected will send the appropriate materials to ZCC version 3.5 control software.

No unsupported commands past version ZCC 3.5 are sent when it is selected as the compatibility version in ONYX.

The "Manage Cutters" dialog reflects that the Legacy code will be sent if job is submitted through ONYX CUT-Server.

