



# Smart Workflow, Print Faster

---

Advanced Workflow. Enhanced Accuracy. Greater Efficiency.

Address

6915 South High Tech Drive,  
Midvale, Utah, 84047

Website

[www.onyxgfx.com](http://www.onyxgfx.com)

# Introducing ONYX 25



ONYX 25 was designed with input from print professionals around the world, and it delivers smarter tools, enhanced integrations, and refined usability to help your production business thrive in today's fast-paced print environment.

Whether optimizing workflows, improving color accuracy, or adding new devices to your production, ONYX 25 is built to elevate your print production.

# Why Choose ONYX 25?



Revolutionized Layout tool



Smarter Media Management



Update ONYX HUB Experience



Expanded ONYX Sync Integration



Enhanced Device support





# Revolutionized Layout Tool

---

Design Smarter. Print Faster.

# Revolutionized Layout Tool: Overview

---

**Let's explore the powerful new features in ONYX 25's reimagined Layout Tool—built for speed, precision, and board and jig template-ready printing.**

- Ready-to-Use Jig templates
- Pre-built templates are available for fast, easy setup
- Create a custom template with crop marks and bleeds
- Set up a template with multiple images
- Use a template for double-sided printing
- Personalize printing with ONYX Variable Data



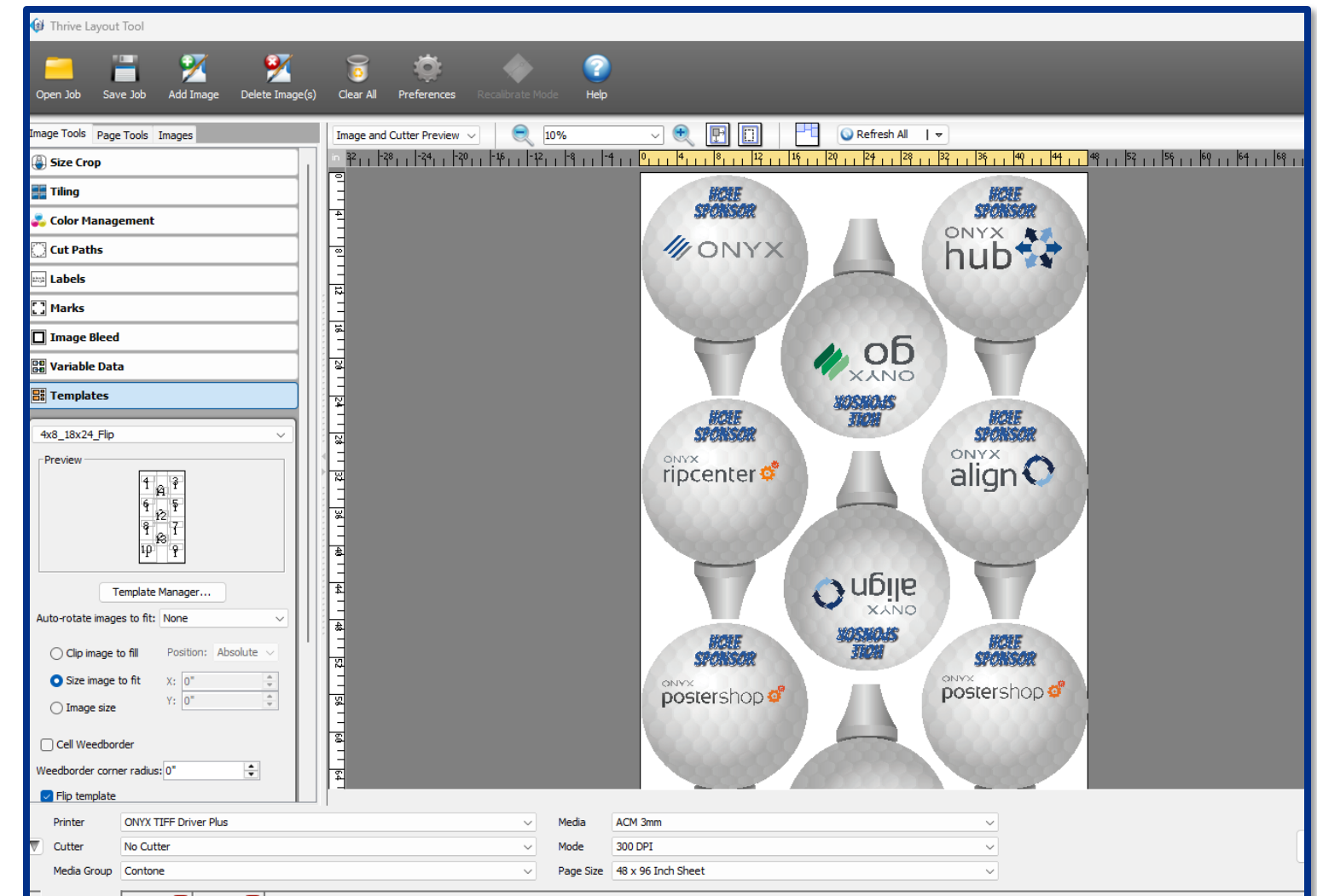


# Revolutionized Layout Tool: Templates

The ONYX Layout tool in ONYX 25 includes an updated template tool. It offers ready-made and custom templates perfect for single- and double-sided board printing, Jig, or any application requiring accurate file placement. The templates also offer flexibility, Flatbed and Roll to Roll printing.

## Multiple Images on one template

- Place images using the image indexing setting in the desired location on the template
- Each template will ensure the artwork is printed exactly where it is needed



# Application of Layout Tool: Templates

As a time-saving solution, ONYX has revolutionized Layout Tool with Jig templates.

- Ready-made templates will ensure that your print productions will print smarter and faster

Template printing is essential because it ensures consistency and accuracy.



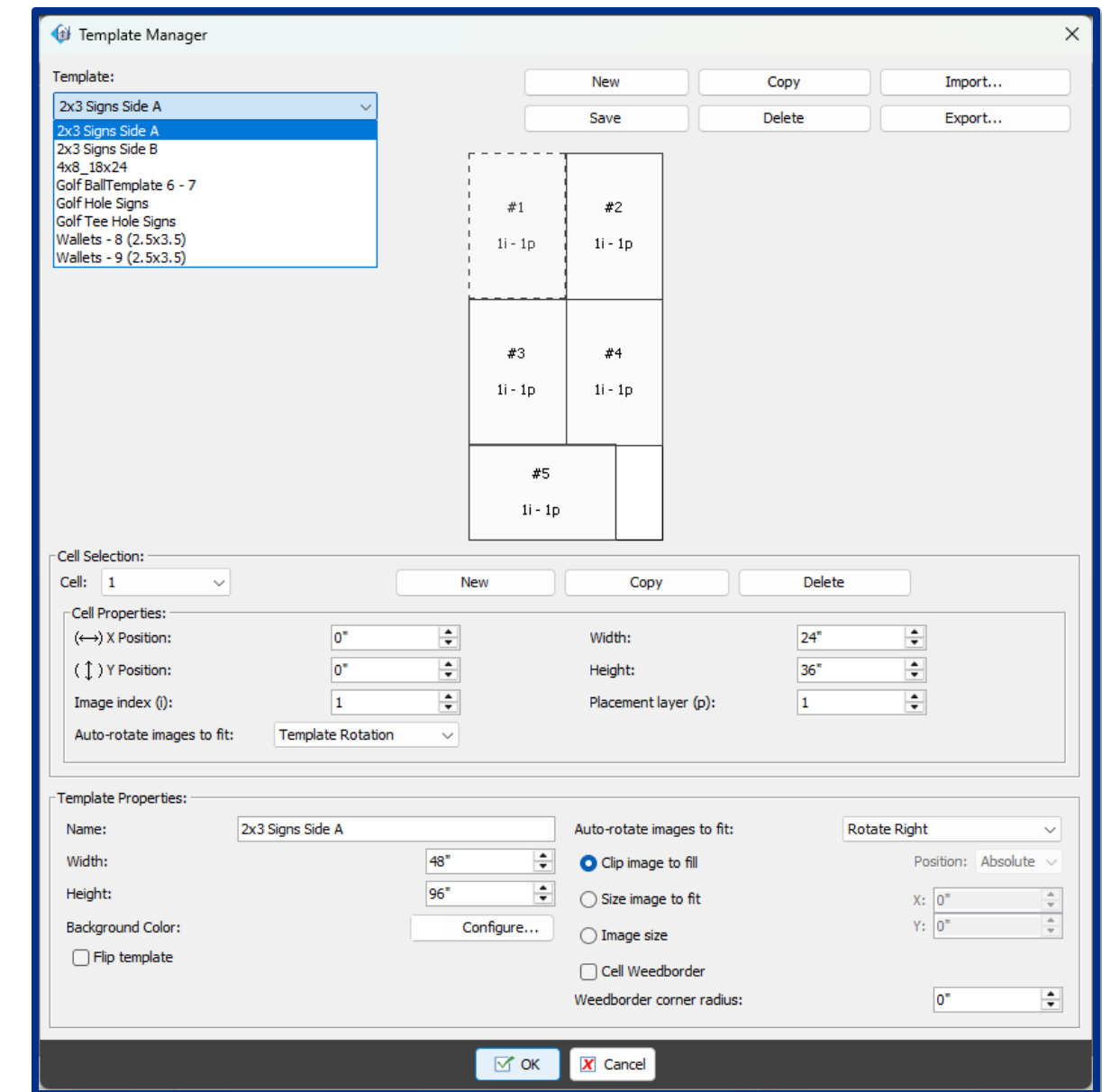
Jig layouts are key tools for high print quality when printing on objects such as pens, golf balls, phone cases, lip balm, lighters, and other dimensional items.

# Revolutionized Layout tool : Templates

ONYX Layout tool includes Pre-set templates for standard jobs, such as double-sided yard signs, photo packages, and Jig printing. Pre-Set Templates eliminate setup in prepress design programs.

## Pre-Set layout template tool features:

- Image placement setting images in front and behind
- Offering flexibility for single image placement or multiple image placement
- Overlap label and trim guides for utilizing media optimization
- Auto Rotation with the image rotation tool in the template

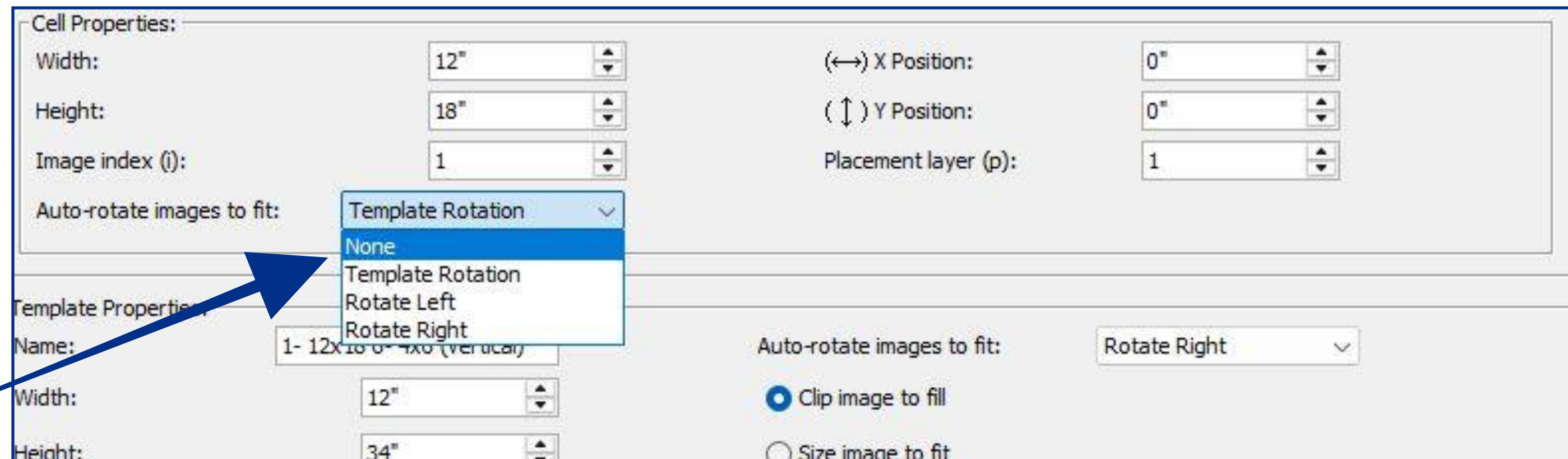




# Revolutionized Layout tool : Templates

Templates that use auto-rotation is critical to optimizing the media and job placement.

- It ensures correct orientation for complex layouts or double-sided jobs
- New Layout templates include rotation settings that optimize the template size and the media
- Auto-rotate images using these settings: None, Template rotation, Rotate Left, Rotate Right



The screenshot displays the ONYX layout tool interface, divided into two main sections: Cell Properties and Template Properties.

**Cell Properties:**

- Width: 12"
- Height: 18"
- Image index (i): 1
- Auto-rotate images to fit: A dropdown menu is open, showing options: None, Template Rotation, Rotate Left, and Rotate Right. A blue arrow points to the 'Template Rotation' option.
- (↔) X Position: 0"
- (↑↓) Y Position: 0"
- Placement layer (p): 1

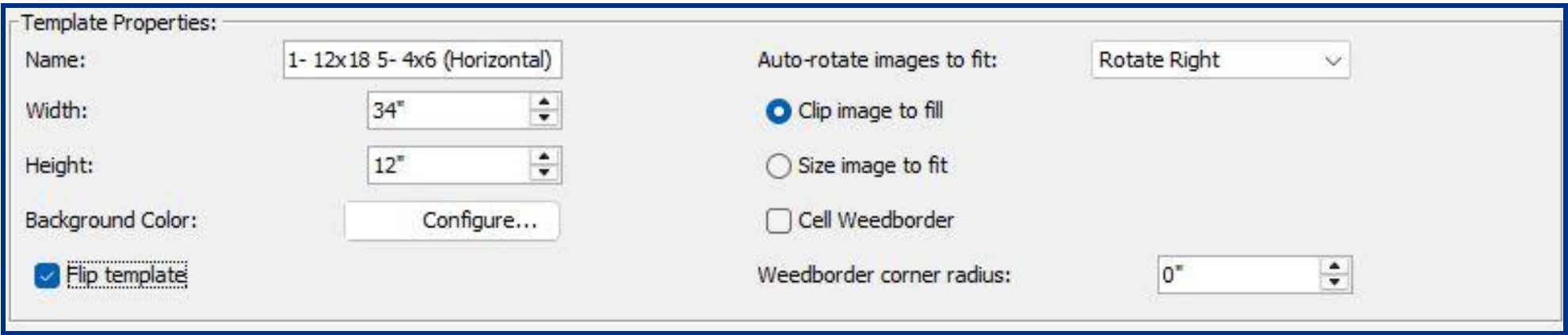
**Template Properties:**

- Name: 1- 12x18 0" x 0" (vertical)
- Width: 12"
- Height: 34"
- Auto-rotate images to fit: Rotate Right
- ☒ Clip image to fill
- ☐ Size image to fit

# Revolutionized Layout Tool: Enhancements

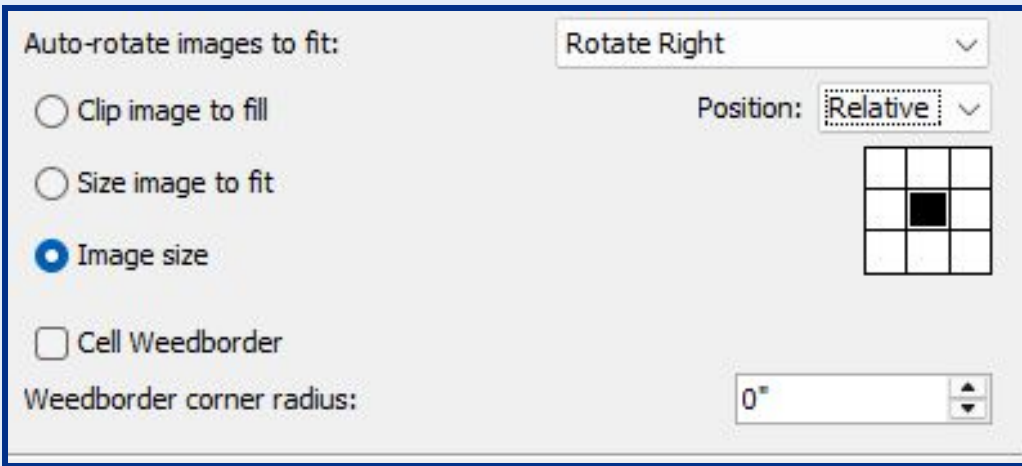
## Layout Tool Template Manager Flip template.

- Perfect for multi-sided prints



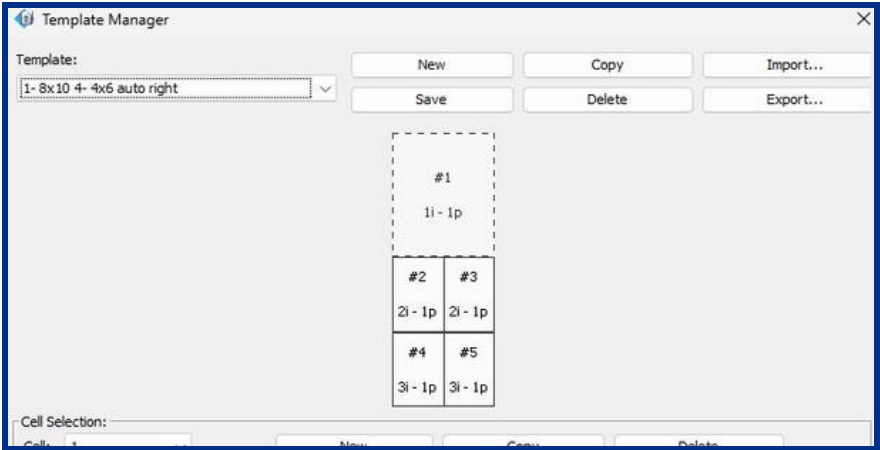
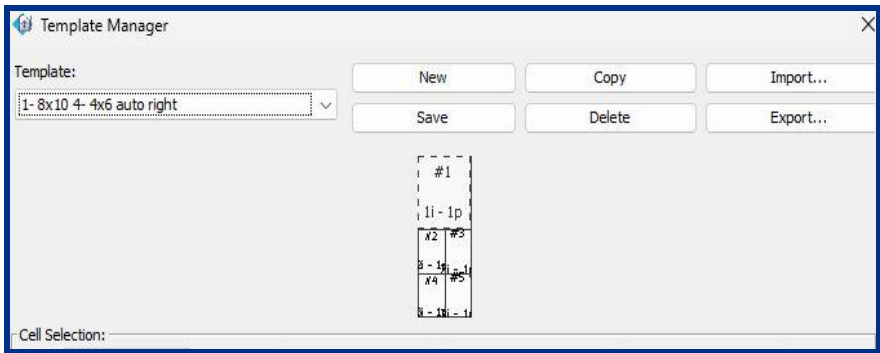
## Control exactly where images appear in each cell.

- Absolute: use X and Y coordinates
- Relative: snap to center, edges, or corners using a grid
- Image Position and Sizing Options



## Improved usability on high-resolution monitors.

- Template editor now scales with your screen
- Resizable Template Dialogue



# Application of Pre-set Templates: Double Side Printing

Images can be grouped and organized on each template.

- The layout will display the images used in the template
- Visually check the files on the layout are correct, before you print
- Time-saving solution will reduce manual operation
- Multiple files will rip and print at once
- Flipping images is easy and can create a turn and tumble layout

Control the exact placement of images with three new tools:

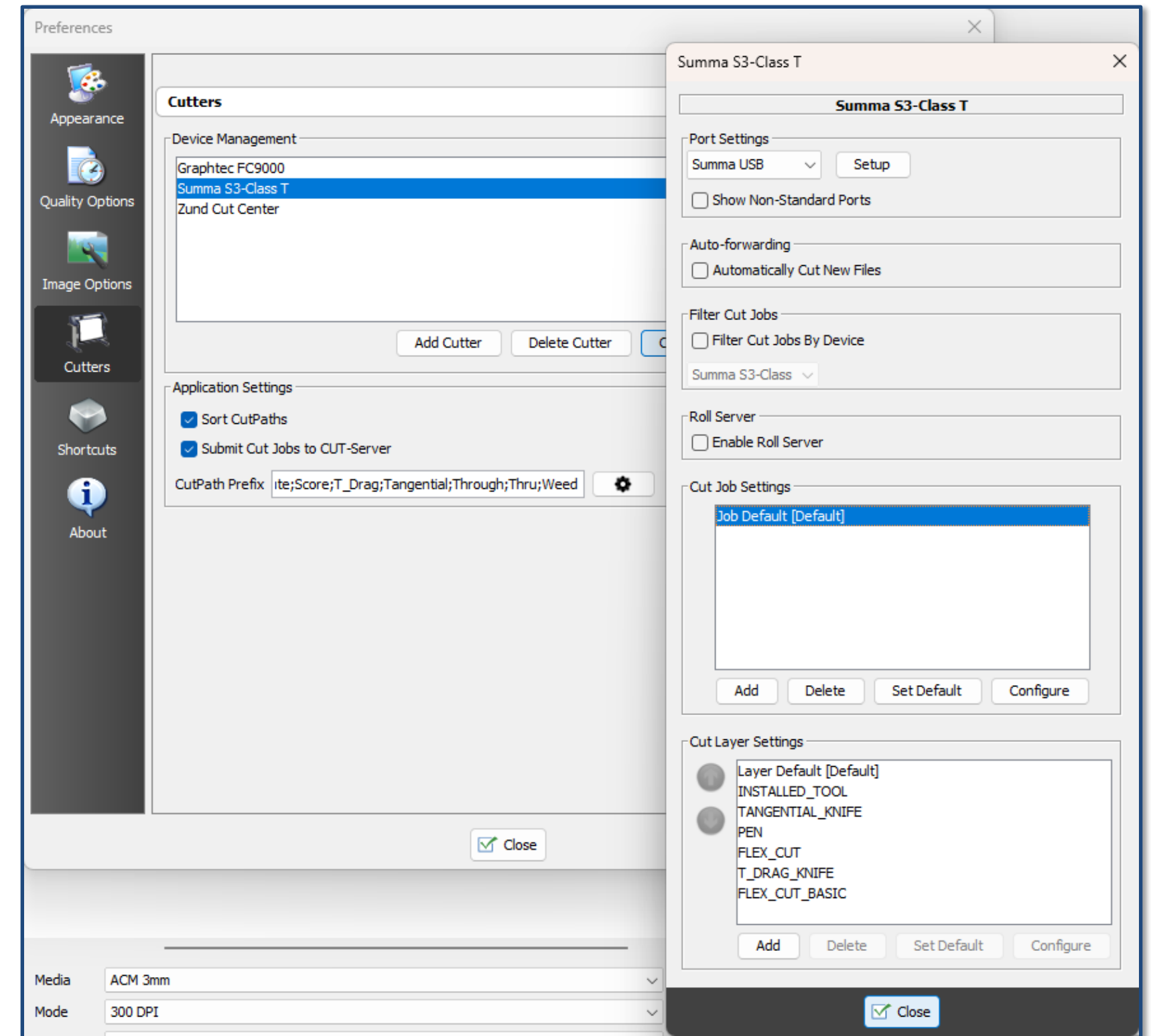
- **Absolute:** Use X and Y coordinates to accurately place images on the page
- **Relative:** Snap to center, edges, or corners using a grid
- Position image and set sizing requirements



# Revolutionized Layout Tool: Cutting

Print and cut for all Layout Tool workflows.

- The cutter marks will be applied to a Pre-Set or custom templates
- Seamless workflow for associating cut paths in the file with the tool settings on the cutter
- A weed border and corner radius can be added to a file or a template.





# Smarter Media Management

---

Optimized Color Control



---

# Smarter Media Management: G7+

**ONYX 25 includes G7+ and G7 methodology for printing and proofing to achieve enhanced gray balance for more accurate prints.**

**ONYX Media Manager includes G7+ and G7 Calibration.**

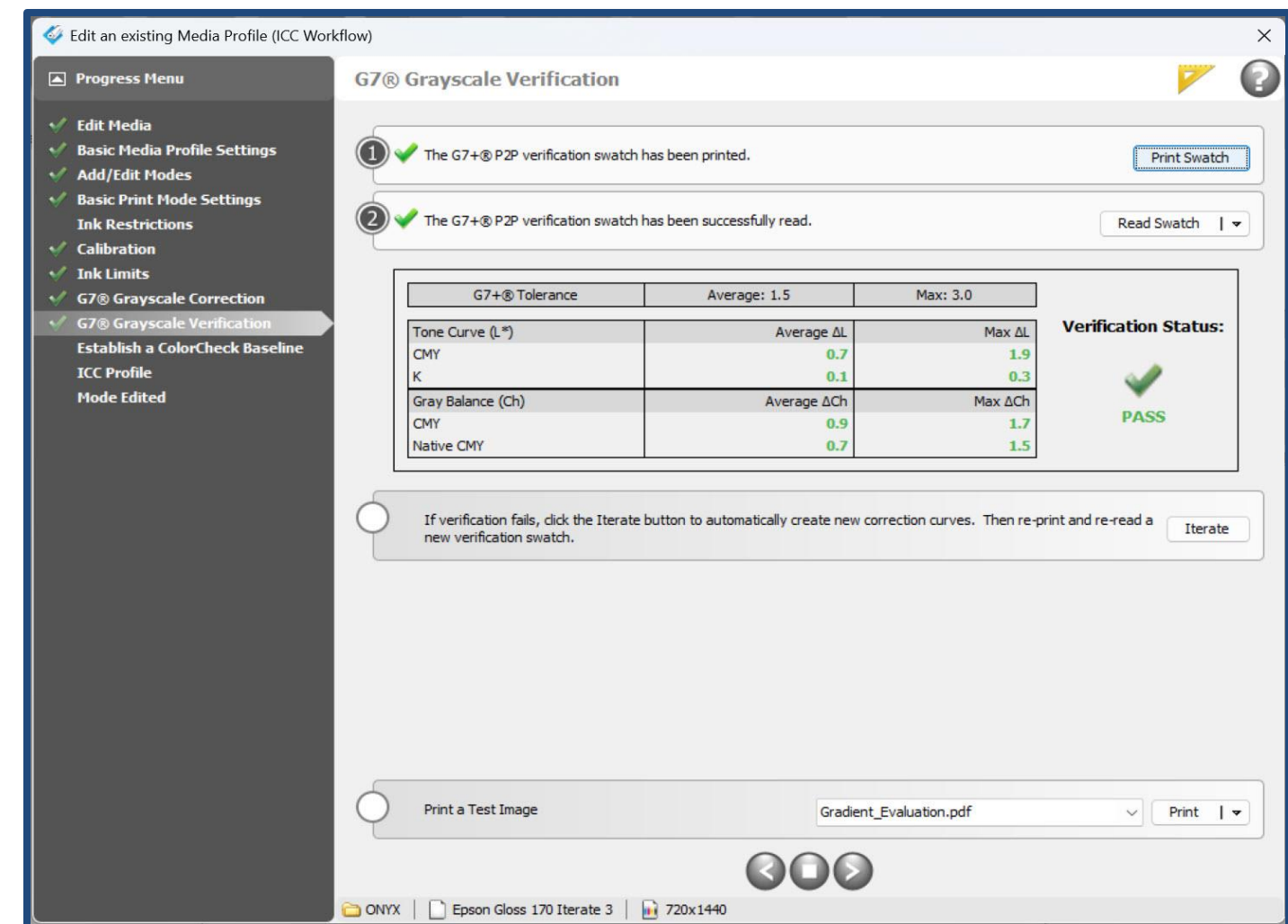
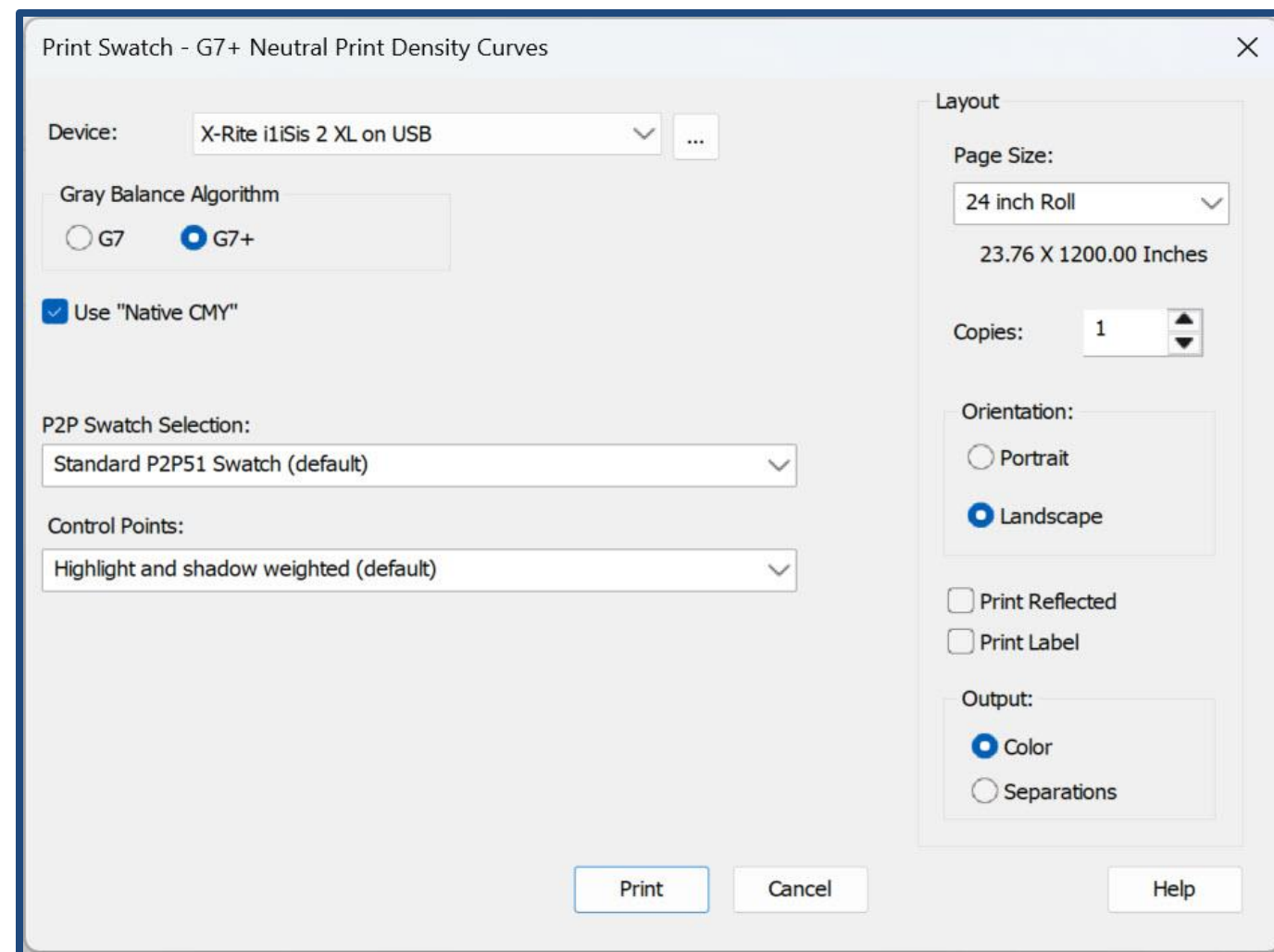
- G7+ retains the core features, benefits, and look of G7, while delivering more accurate gray balance, enhanced tonality, and better performance in challenging print conditions
- G7+ is a method to ensure a similar appearance across all print output devices
- G7+ is used to accurately and repeatedly hit desired color targets
- G7+ is designed to align all processes, substrates, and inks
- G7+ is built on global standards for aligned global print communication and supply chain management



# Smarter Media Management: G7+

Optimize Color controls with industry-standard tools to specifications for achieving visual similarity across all print devices.

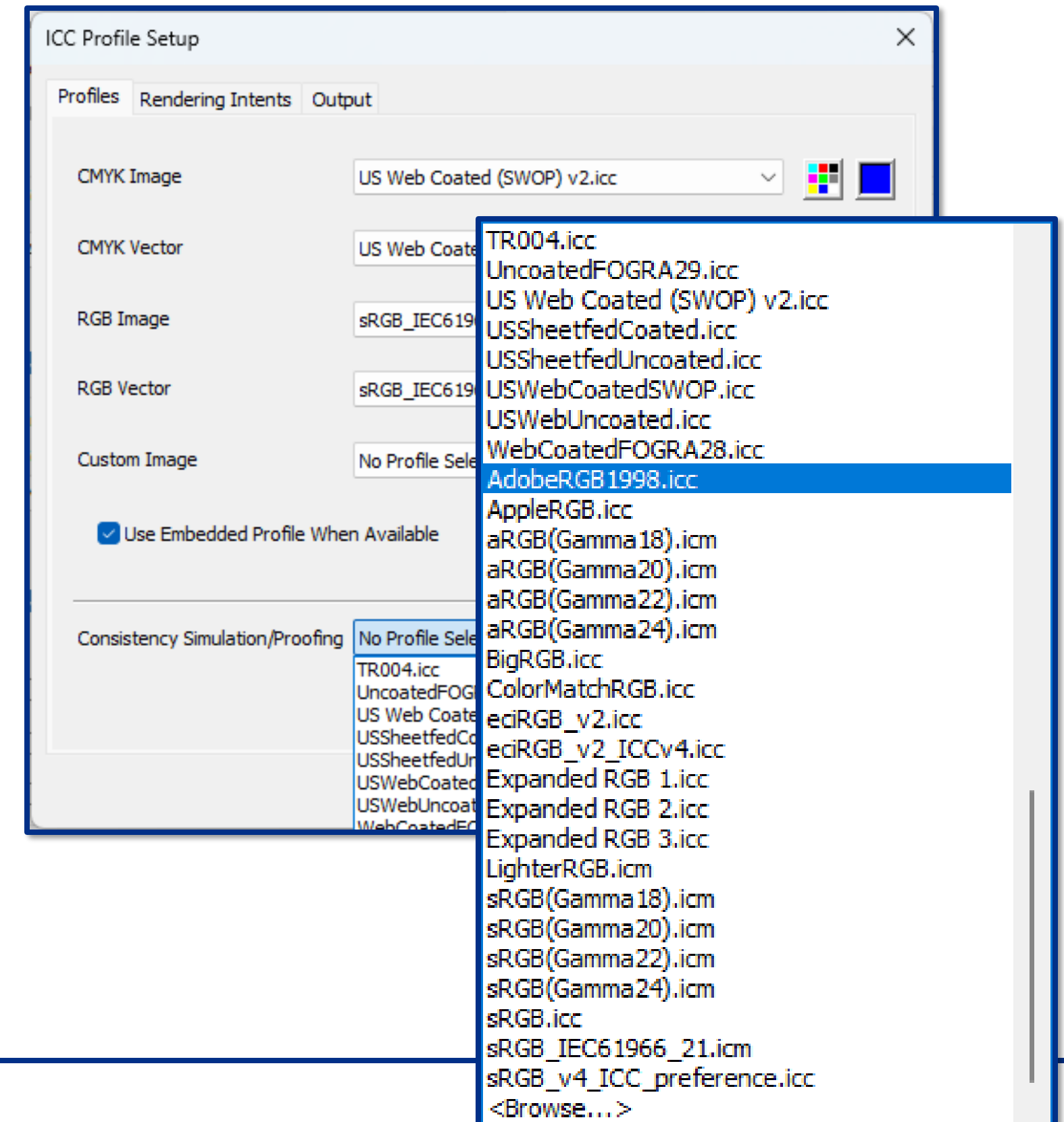
- The next evolution in print calibration, designed for printers, press operators, and color professionals, G7+ enhances G7® method to better support today's diverse printing environments



# Smarter Media Management: RGB Simulations

PDF documents can specify the color space for transparency blending, either CMYK or RGB.

- When the color space is RGB, it's recommended to use an RGB profile for accurate simulation
- This allows for easy use of RGB profiles for simulation and proofing, especially for PDF files with complex transparencies designed for web browsers





# Elevated User Interface

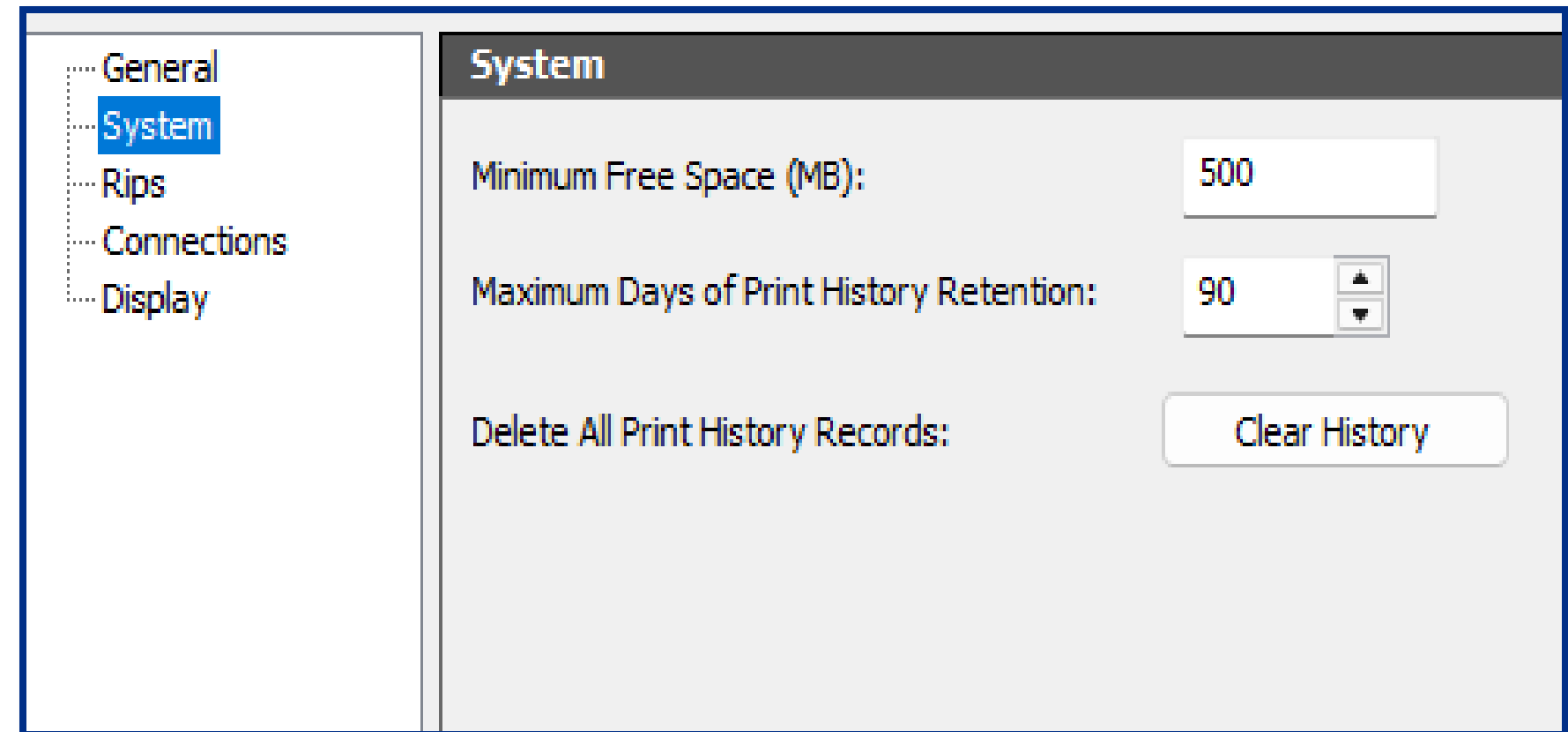
---

Refined Usability

# Elevated User Interface

The New Print History Retention control allows users to manually delete print history or set the number of days. If they don't want to delete but need space, they can use ONYX Archive to backup and retrieve files.

- RIP-Que Preview before you print: (The display of cut marks will be in color.)
  - See the print gutter marks before you print with more accurate colors
  - A check box was added to the "Rotate Preview 180°" menu item to make it easy to know whether the preview has been rotated



**Ink Usage Precision will show how much ink is used in a print based on the selected decimal place.**

*General Settings/Display/Measurement Display*





# ONYX Hub Experience

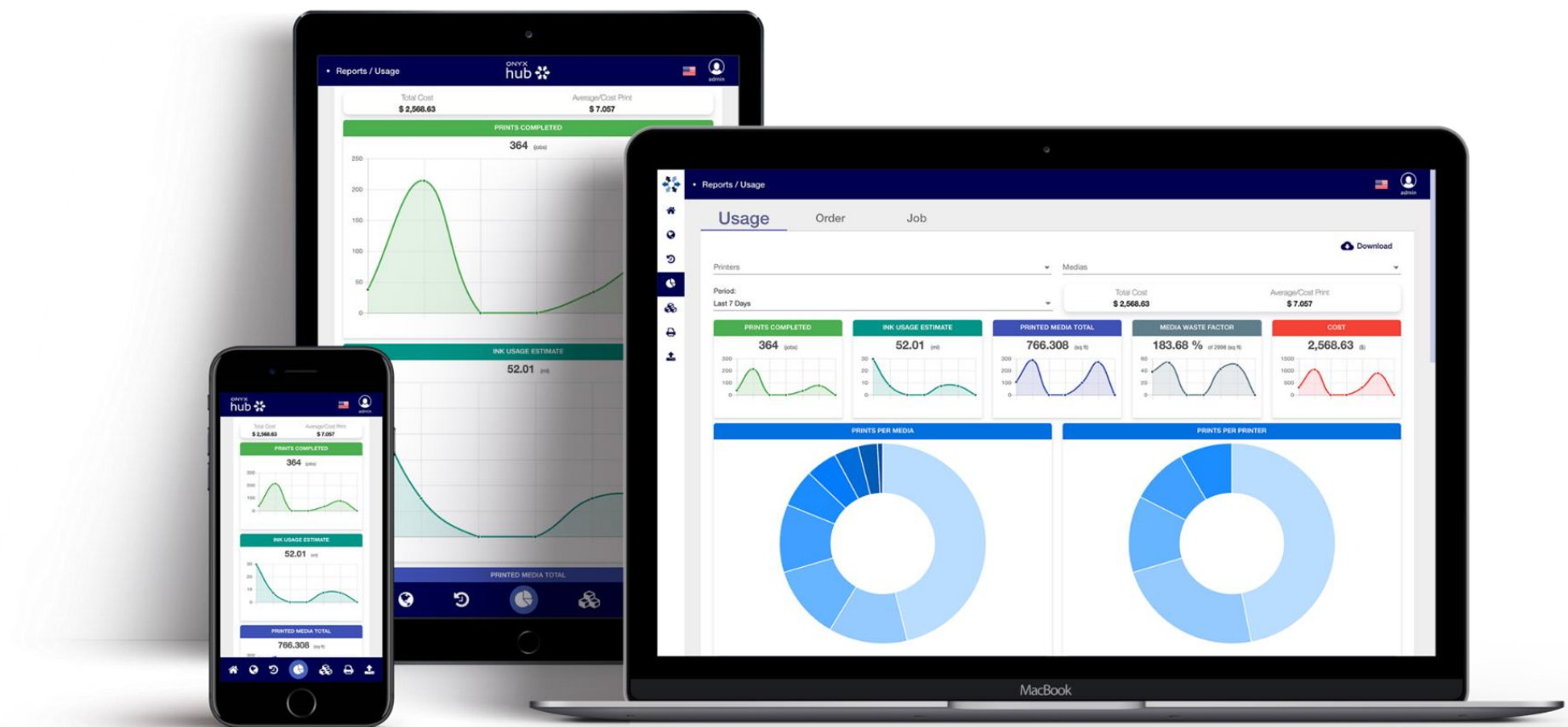
---

Intelligent Data

# What is ONYX Hub?

ONYX Hub is a **business intelligence tool** that takes a unique approach to making **production data** visible in a print shop. ONYX Hub provides job management with real-time, historical, trend, and cost data in an **easy-to-understand browser-based dashboard**.

- Visualize site-wide production data
- Get real-time, trend, and historical reporting
- Better understanding of costs and labor rates
- Report on media waste and ink use
- Identify production bottlenecks
- Submit and manage jobs to printer(s)
- Track job status
- Keep data secure
- Easily backup and restore data



# ONYX Hub Experience

Live printer status information is now shown directly in ONYX Hub UI for better real-time visibility.

## Add Printer States to Live View.

- Users who install ONYX Data Access without Thrive can now easily view the license in use — it's clearly displayed within the Data Access UI for quick reference and transparency

Printer Name											
1 0 0 0 0 0 1											
Row	Status	Preview	Job	Quantity	Size	Media	Customer	Order	Due Date	Station	Printer
1			ONYX_Quality_Test_2022	1	23.00x12.00in	ONYX Test Media [Self-Adhesive Vinyl]				OWZ/ 24.0.3	Printer Name  



# Expanded ONYX Sync Integrations

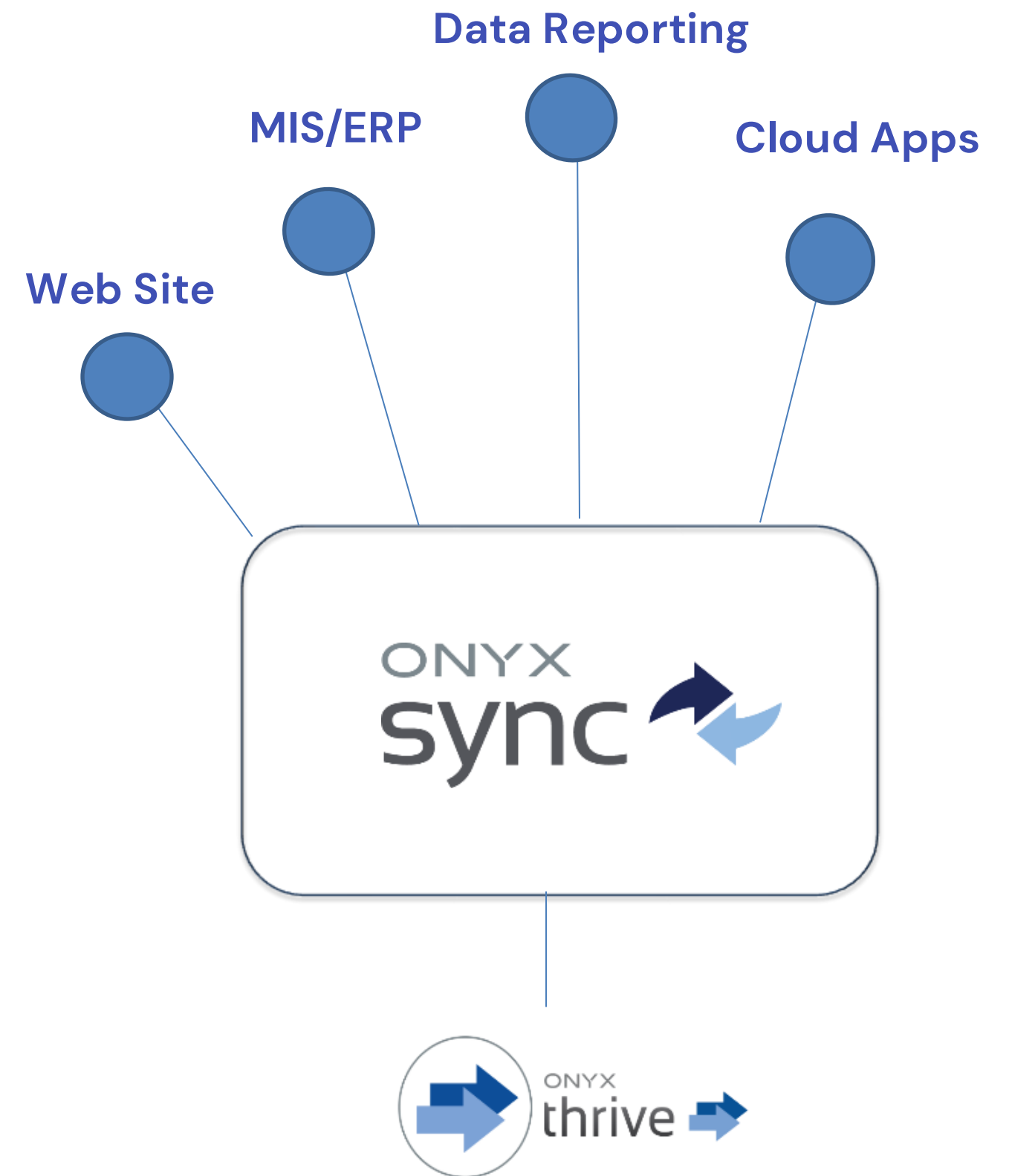
---

Bigger Possibilities

# What is ONYX Sync?

ONYX Sync is an Application Programming Interface (API) facilitating **automation and integration between ONYX Thrive and external tools.**

ONYX Sync empowers businesses to seamlessly integrate their existing solutions with the advanced workflow automation capabilities and rich production data provided by ONYX Thrive.



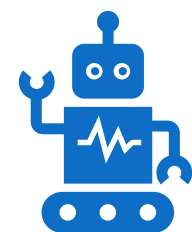


# Possibilities with ONYX Sync



## Application Integration

Include the output from other systems and tools in a workflow that includes ONYX Thrive. (Preflight, Web to Print, Management Systems)



## Automating Activities

Remove the dependency on manual (in-person) labor to streamline the processing workflows



## Data collection

Retrieve information about printing for use in ERP and other Management Systems



## Event Notifications

Get real-time information about printing statuses for use in event-based processing and display

# Expanded ONYX Sync Integrations

## Smarter Connections for Custom Workflows

### Dashboard V3 Enhancements

- Expanded API endpoints for printer state monitoring, job reporting, print time estimates, and media/ink level visibility.

### Printer Events via SSE

- Subscribe to real-time print events—ideal for integrations with external systems or dashboards.

### PDP SYNC Updates

- New printer alert endpoints
- Support for next print time estimation
- Job and printer message cleanup tools
- Enhanced job messaging
- Real-time printer alerts for faster response
- Improved backend visibility and control

For print shops that rely on connected systems,

**ONYX 25 and ONYX Sync offer expanded integration support:**

- **Dashboard Enhancements:** New endpoints for print time, ink/media levels, and printer monitoring
- **Real-Time Printer Events:** Push-based updates enable seamless integrations with external software systems
- **ONYX SYNC Tool:** Enhanced job messaging and printer alert features provide better backend management





# Enhanced Device Support

---

Effective Connections

# Enhanced Device Support

## Epson SD-10 Spectrophotometer

- Elevate your color: Provides accuracy and speed to give you the color information you need to make critical color decisions
- EPSON port network account connection required



## Barbieri Spectro LFP qb Digital Press Edition

- Automatic Reflection Spectrophotometer for color measurement of reflective paper with smooth and finely textured surfaces in various digital printing applications





# Enhanced Device Support

## New Cutters Drivers:

- Graphtec CE8000 ; Grando 6090; KEUNDO 6090, ORIC 6090

## Updated Cutter Drivers: (refer to Release notes for additional info)

- Colex; GCC; Graphtec; HP Latex Plus; Summa S3,S2,S One, F-Series
- Zünd –ZCC version 3.5,4.5, position marks

## New Printer Drivers:

- HP Latex R530/730/830
- Mutoh XpertJet C641SR Pro printer/Cutter Combo







# How to Get ONYX 25?

---

New Version

---

# How to Get ONYX 25?

## When is ONYX 25 globally available?

- Global availability is expected to be available on July 30, 2025
- Purchases on or after April 1<sup>st</sup>, 2025 is entitled to ONYX 25 at no charge but must request the update before October 31st, 2025
- ONYX 24 is our previous version, ONYX 22 is our legacy version

## ONYX 25 is available through ONYX Advantage or a new license:

- Upgrade and purchase requests can be made by contacting an Authorized ONYX Reseller or by emailing [sales@onyxgfx.com](mailto:sales@onyxgfx.com)
- ONYX 25 is available for all ONYX software products, including ONYX Thrive and all ONYX RIP products

## How do customers get the new release?

- ONYX 25 will be immediately available to existing ONYX Advantage agreement holders
- ONYX 25 will be immediately available to all ONYX Go subscribers
- Downloads will be available by visiting [www.onyxgfx.com](http://www.onyxgfx.com)

# Try ONYX 25 Free for 15 Days

New customers can try ONYX 25 for free for 15 days. Simply click this [link](#) and create an account to download a trial



Existing ONYX customers can upgrade through ONYX Advantage Agreements.

(ONYX 24 becomes the previous version, ONYX 22 legacy)



ONYX 25 is included as part of an ONYX Go subscription





# Reseller Resources

---

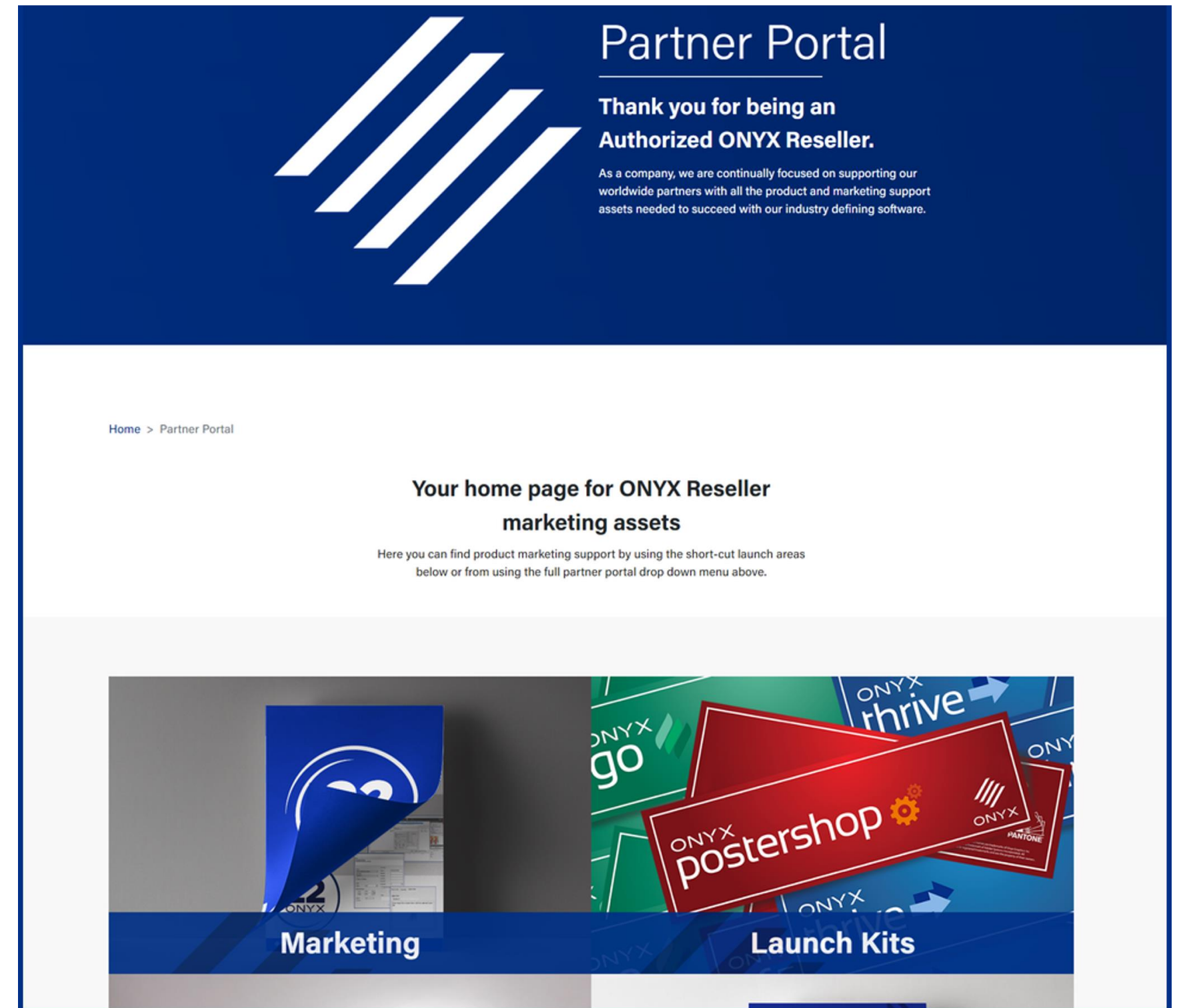
Fast, Easy, Profitable

# Marketing Collateral for Authorized ONYX Resellers

Authorized ONYX Resellers and Distributors have access to many marketing assets directly from the partner portal, including:

- ONYX 25 GTM Presentation
- ONYX 25 Commercial
- Brochure (Translated Versions Available)
- Blog
- Email Template
- Email Signature
- Pop Up Banner
- Logos
- Web Banners
- Online Help
- Release Notes

Visit [onyxgfx.com](https://onyxgfx.com) and sign in to your Partner Portal account to access all ONYX 25 Launch Kit materials.



# Current, Previous & Legacy Versions

---

## Current Version:

ONYX 25 Current Version refers to the latest version of our RIP software. To receive Tech Support, please subscribe to an Advantage agreement

- ✓ Technical support (With Qualifying products or a Service Agreement)
- ✓ Software Downloads
- ✓ Point releases and Patches

## Previous Version:

ONYX 24 Previous Version refers to the version that immediately precedes the Current Version.

- ✓ Technical support (With Qualifying products or a Service Agreement)
- ✓ Software Downloads

## Legacy Version:

ONYX 22 Legacy Version refers to two versions behind the Current Version.

- X Technical support (Not available)
- ✓ Software Downloads

## Unsupported Versions:

- Any versions prior to the Legacy version are unsupported. (*21.x, 19.x, 18.x, and prior*)
- Printer Drivers for unsupported versions will no longer be available.
- The software install packages for unsupported versions will no longer be available.
- Technical support assistance is not available for unsupported versions.



# Thank you!

As a time-saving solution, ONYX has revolutionized Layout tool with Jig templates. Ready – made templates will ensure that your print productions will print smarter and faster.

---

Smarter Workflows. Refined Usability. Bigger Possibilities.

