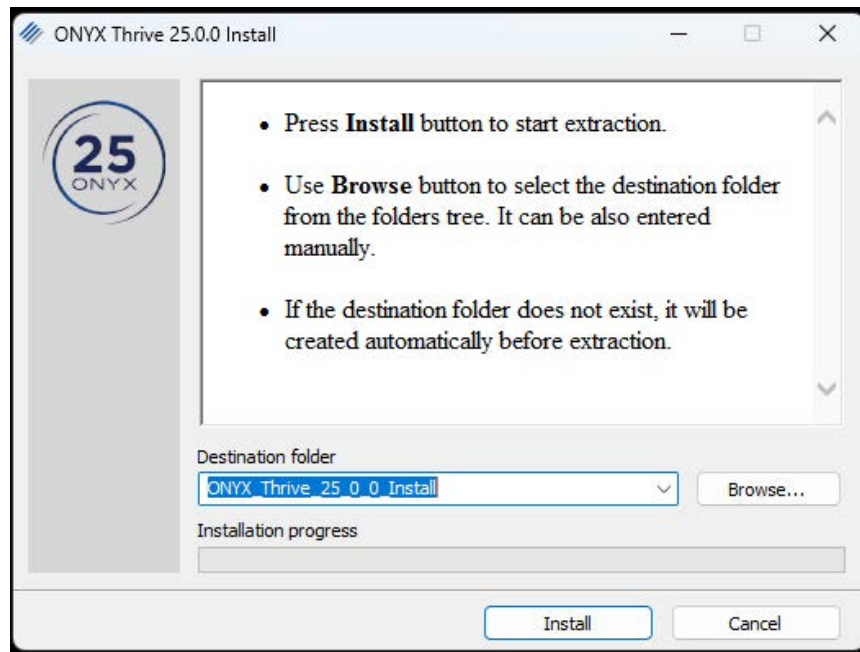


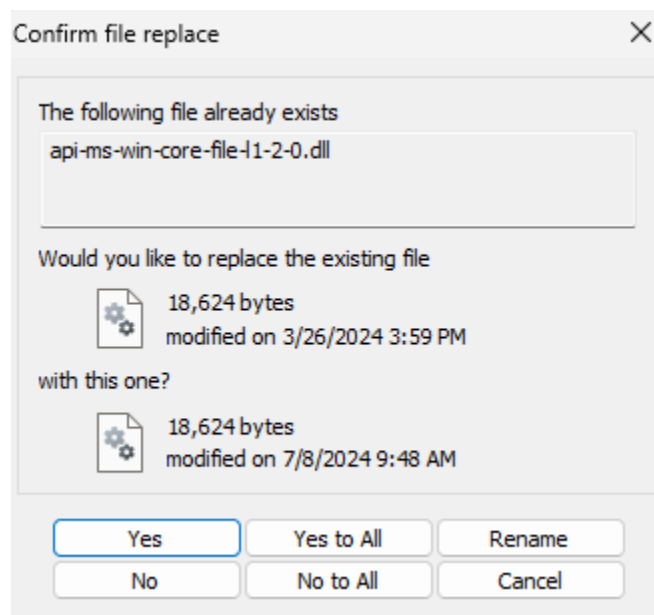
# ONYX Version 25 Upgrade Guide

## Getting Started

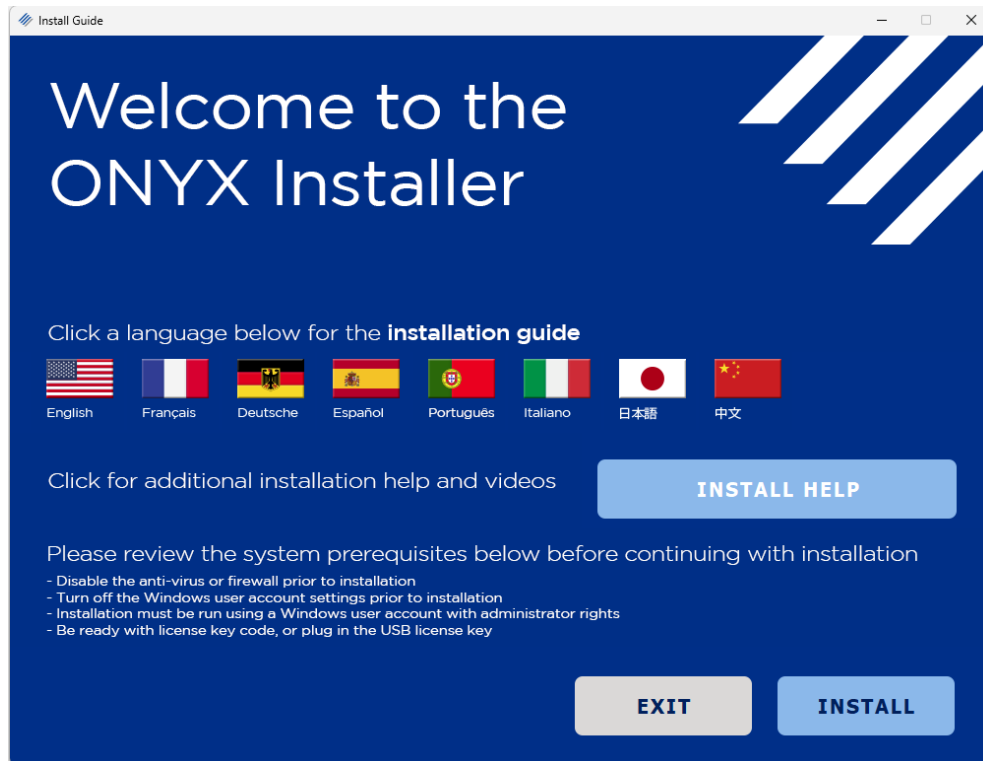
1. Download and run and ONYX\_Product\_25\_0\_0.exe file.
2. After running the executable, the installer will pop up, click “Install”.



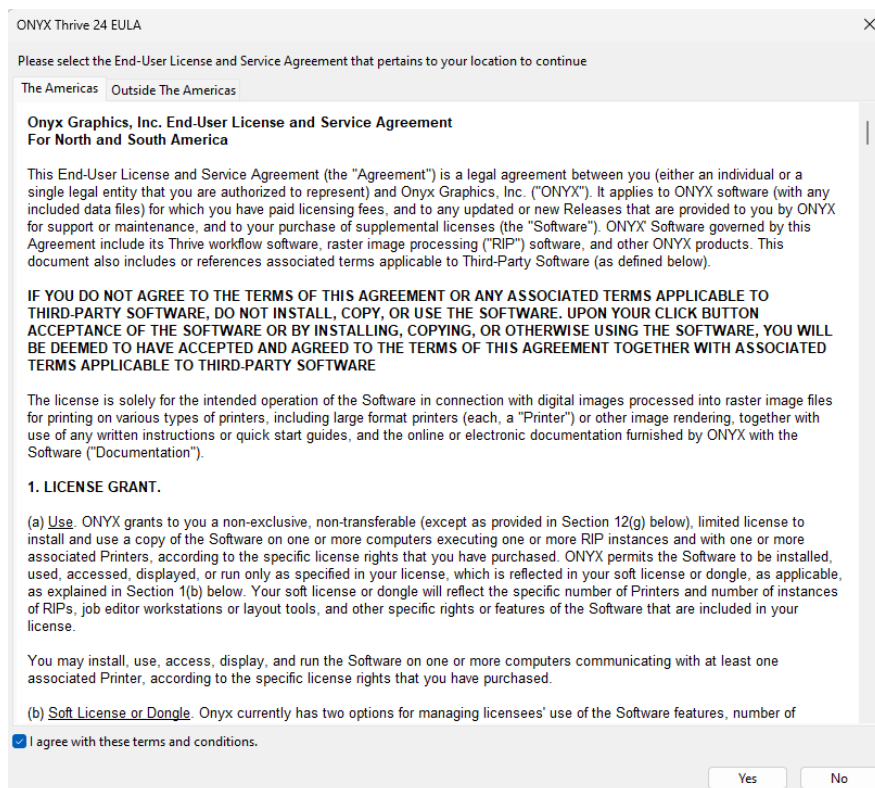
3. If a confirm file replace window opens, click “Yes to All”.



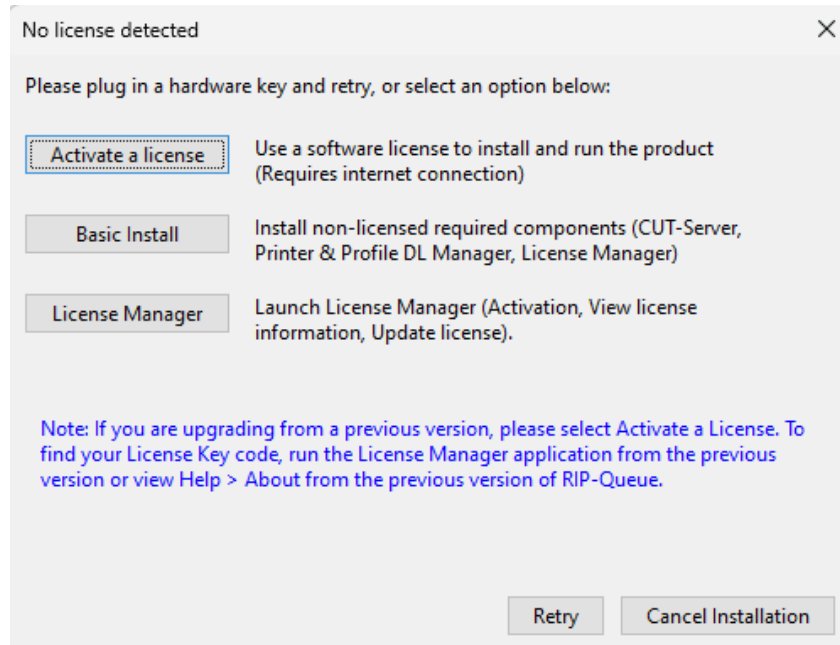
4. Click “Install” on the “Welcome to the ONYX Installer” window.



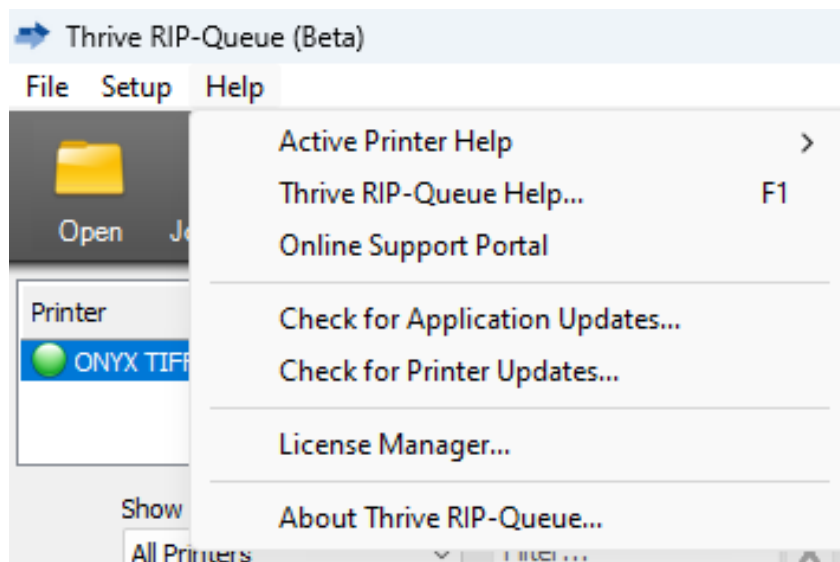
5. After agreeing with the terms and conditions, select “Yes” to move on.



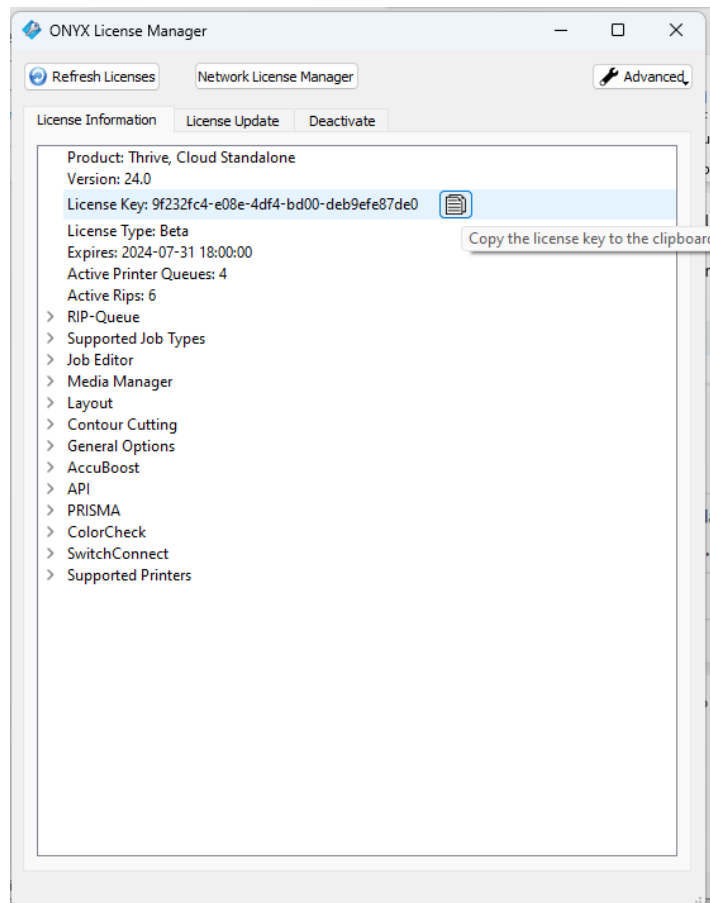
6. The drivers will now install on your device, keep an eye on the loading bar while it loads. **Note: Steps 7-12 are new steps for Version 25**
7. Once the drivers are downloaded and detected another installation window will appear. This is where you will add your license that you already have on your previous version to activate Version 25. Keep this window open while you complete the next 3 steps.



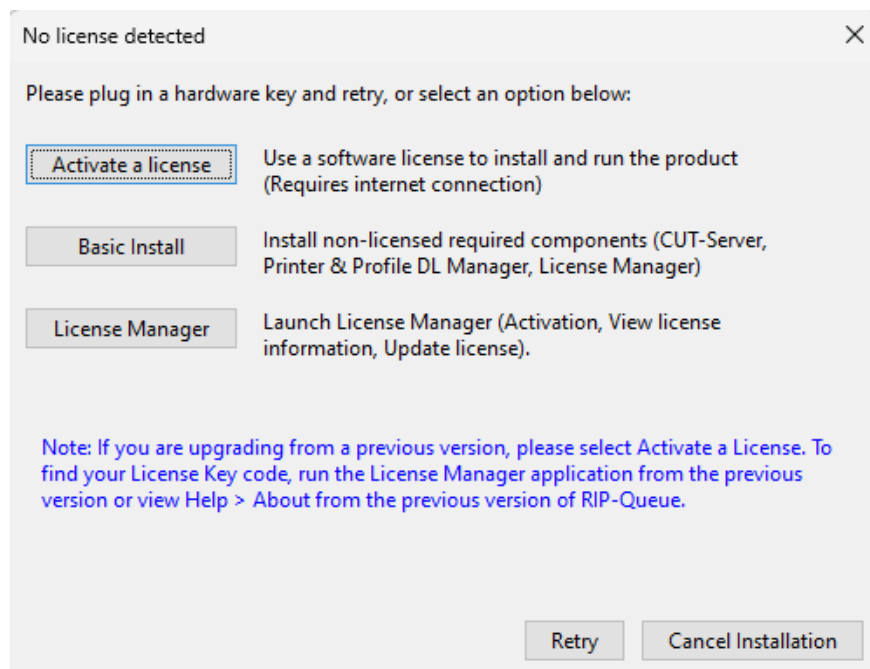
8. Open your current version of ONYX as you normally would, (typically by clicking on the desktop icon on your home screen).
9. Navigate to "Help" at the top of the RIP and click on License Manager.



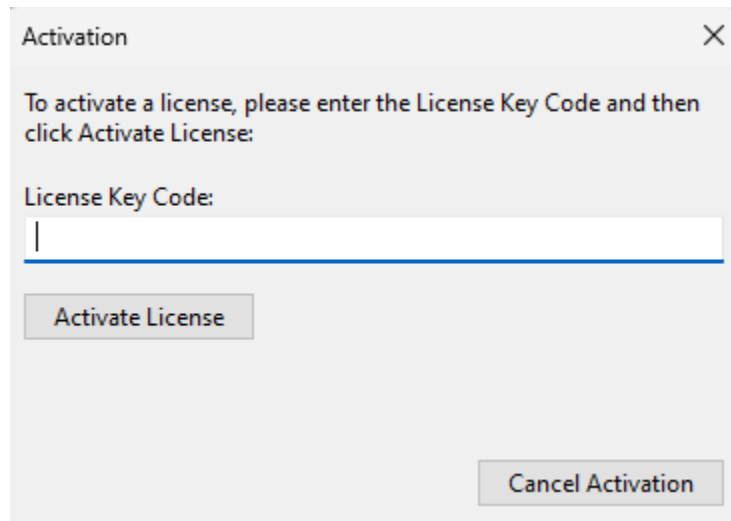
10. Once License Manager is open, you can copy your key to the clipboard by clicking on the paper icons to the right of where the key is listed.



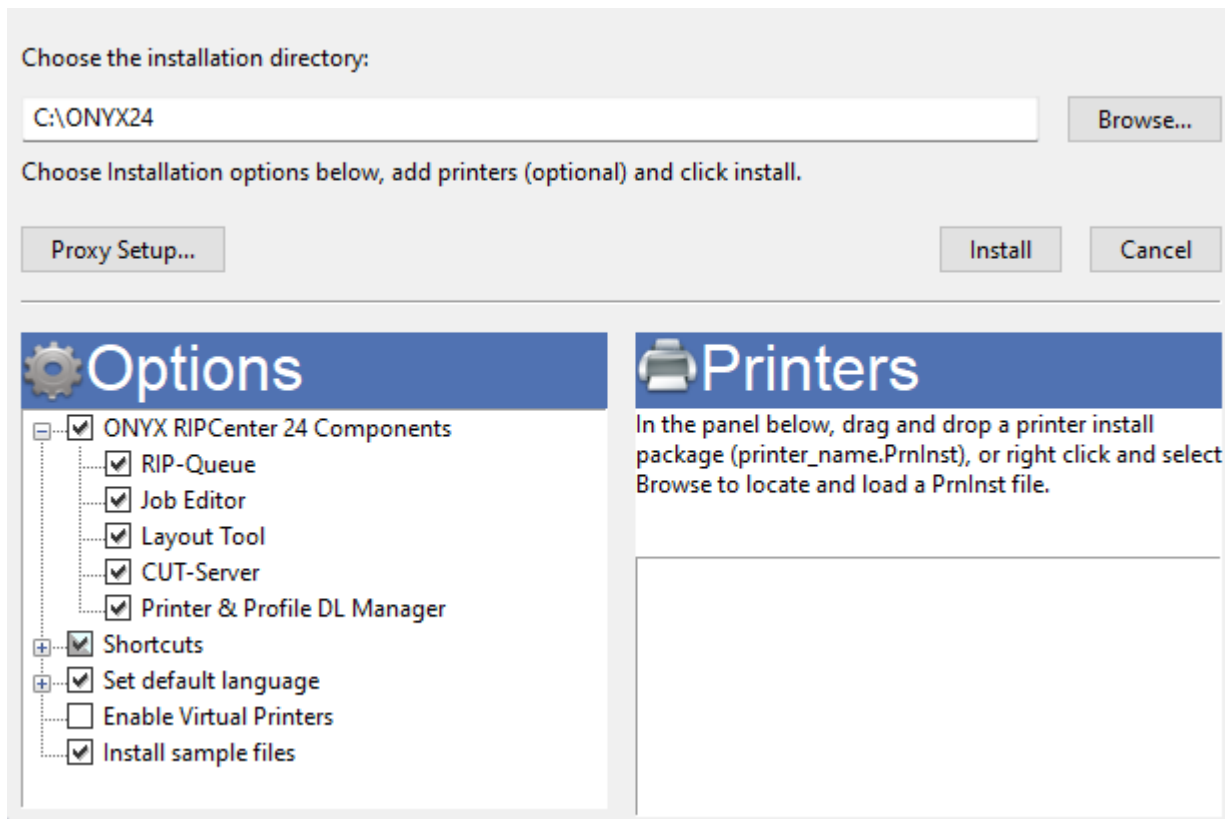
11. Navigate back to the Version 25 installation window and click “Activate License”



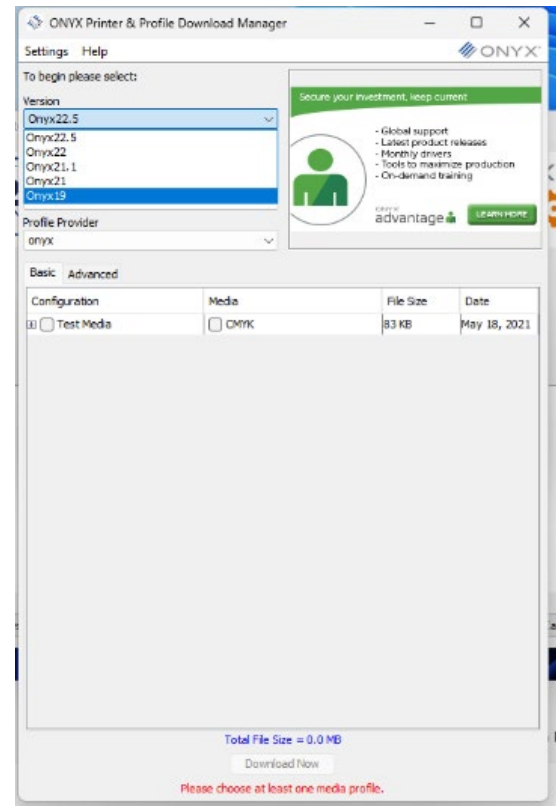
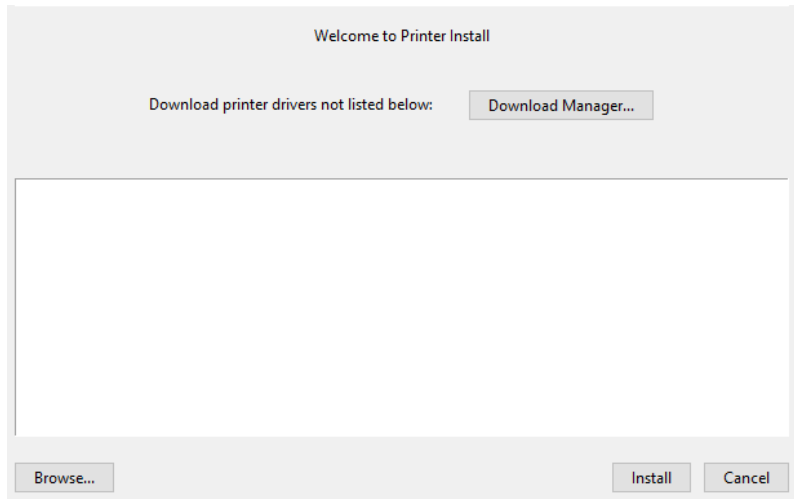
12. Paste the license key that you copied to the clipboard in the activation dialog box, and click “Activate License”



13. After the license is activated, you can set up your options and printers. You can right click and browse for PrnInst files, or you can wait to setup in the software. Click Install to move forward. Once the installation loads the screen will remain the same, click “Finish” when done.



14. The Printer Install window will prompt you to select download manager to download additional printer drivers.



15. Once you choose and download your printer, it will show in the printer installation window (above). Click “Install” and you will have finished the upgrade process to Version 25!