



Backing Up ONYX

There are many situations when a backup of settings or files is needed. This document explains how to make backups of most settings and files in the ONYX software. These backups can be used during a reinstallation or if the software needs to be installed on a new computer.

Backup Printer Drivers

The Printer driver (.PrnInst) contains required dll files, media profiles, Quick Sets and custom page sizes. In RIP-Queue select the **File** menu and choose **Manage Printers**. A warning message appears saying all jobs in a Ripping or Printing state will be canceled. Click **Yes** to continue.

In the Printer Manager window select the printer and click the **Create PrnInst** button. A new window opens showing three tabs, Media, Quick Sets, and Printers. All options under these tabs are checked. Deselect any options if they are not needed. Click **Next**. Choose a location to save the PrnInst file and click **Save**.

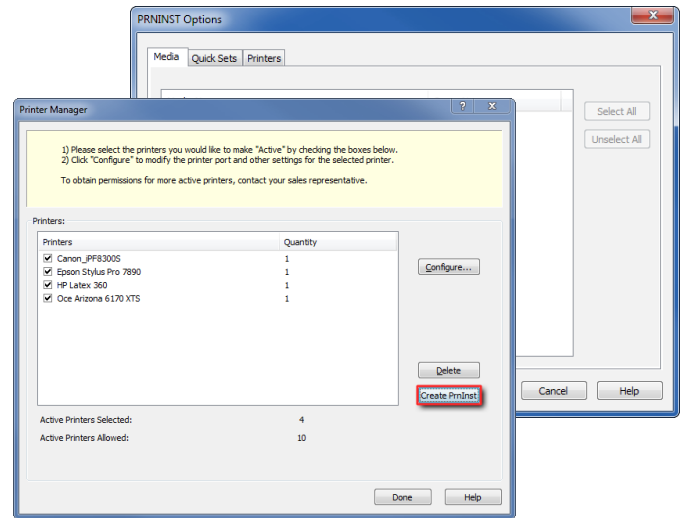


Figure 1: Creating a PrnInst

Repeat this process for each printer and click **Done** when finished.

It is important to remember the PrnInst file can be used only for the same version of ONYX it was created from or for newer versions. It is not backwards compatible.

Backup Media Profiles

Media profiles can be exported independent of a PrnInst file. This is done through Configure Printer. In RIP-Queue select the printer and click on **Configure Printer** from the Toolbar. Click **Yes** to shut down the server.

In the Configure Printer window choose the **Media** tab. Click on the **Export** button. Check mark the media profiles to backup and click **Export**. Next choose the location where the profiles will be saved to and click on **Save**. The file generated is an ONYX Media Library file (.OML). This file can be used to import the profiles for the same printer on a new installation of the ONYX software.

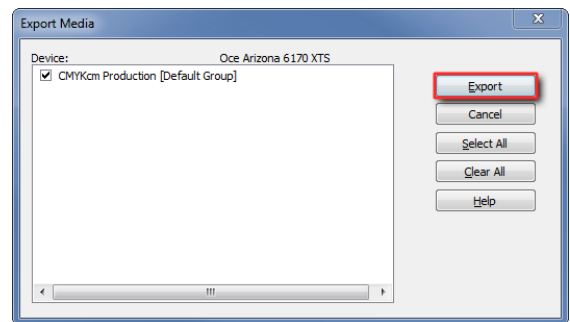


Figure 2: Export Media Profiles

Backup Quick Sets

Quick Sets can be exported outside of creating a PrnInst file. In RIP-Queue select the printer and click **Configure Printer** from the Toolbar.

The first tab in Configure Printer is the Quick Set tab. Select the first Quick Set to export and then click **Export**. Choose a location to save the Quick Set and click **Save**. Repeat this process for each custom Quick Set that needs to be backed up. The file type used is a Quick Sets File (.ONT).

If a custom Quick Set cannot be imported if the media profile assigned by it is not installed. Import any custom media profiles first and then import the custom Quick Sets.

Backup Custom Spot Colors

Custom spot colors can be exported from the Color Matching Table. In RIP-Queue select the **Setup** menu, **RIP Configuration**, **Color Matching Table**. In the Color Matching Table window, choose **User Defined Colors**. Click on **Export** and choose a location to save the backup file (.tab).

Print Mode Defined Colors can also be exported as tab files. This is not needed if the media profiles are exported. Print Mode Defined Colors are copied with media profiles when they are exported or imported.

Backup Buffered Jobs

Buffered jobs can be backed up by copying the files from the Work folder to another location. The files are stored in the Onyx12\Work or Thrive12\Work folder. The location may be different if the Base Folder location has been changed. Go to **Configure Printer** and click on the **Properties** tab. Look at the option **Base Folder**.

Go to the Work directory. Copy the folder for each printer to another location outside the ONYX software folder. Ideally make a new folder on the root of the hard drive. Copy the printer folder into the new folder.

Restoring buffered jobs will only work if the version of the ONYX software is the same and the new installation is on the same drive letter. The printers and media profiles must also be installed first before the buffered jobs can be copied in.

Close all ONYX programs and go to the Onyx12\Work\ or Thrive12\Work folder. Copy the backup files into their respective printer folder. After the files have copied over open RIP-Queue and the buffered jobs will show up.

Backup Cut Files

Cut files are stored in the Onyx12\cutter (Thrive12\cutter\) folder. Each cutter mark used creates its own folder. Copy these folders to another location on the computer, outside the ONYX12 or Thrive12 folder.

After the software is reinstalled or installed on a new system, copy the folders back into the Onyx12\Cutter\ or Thrive12\Cutter\ folder.

Backup Color Templates

ONYX provides the options to create custom color management templates. These templates are stored in

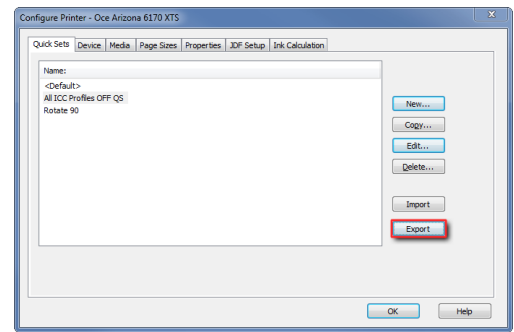


Figure 3: Export Quick Sets

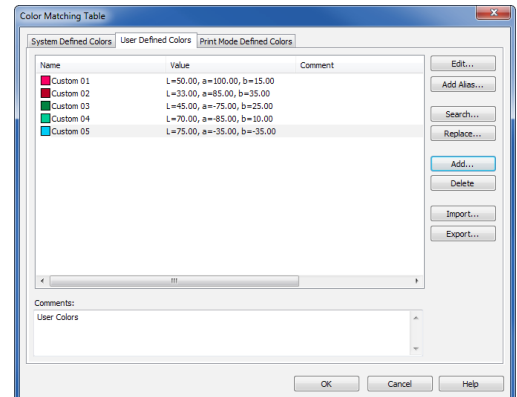


Figure 4: Color Matching Table

the Onyx12 or Thrive12 folder. The files must be copied out of the ONYX software folder. Go to the Onyx12\Templates\ or Thrive12\Templates\ folder. Copy the custom template CCX file to another location on the computer.

The file is restored by copying the ccx files into the Onyx12\Templates\ or Thrive12\Templates\ folder. Relaunch RIP-Queue and the custom color management settings will be listed.

Tips for Restoring the Backup Settings

When the software is reinstalled or installed on a new computer, the settings that were backed up can be restored.

Restore Print Drivers: PrnInst files can be used when reinstalling the software. The advantage of this is all media profiles, Quick Sets and custom page sizes are installed. Otherwise these settings will have to be imported through Configure Printer.

Restore Media Profiles: Media profiles contained in an OML file are imported in *Configure Printer*. Select the printer and click *Configure Printer*. Go to the *Media* tab and click *Import*. Browse to the OML file and select *Open*. The medias in the OML are listed in a new window. Check mark what media profiles are to be imported and click *Import*.

Restore Quick Sets: Quick Sets are imported from ONT files. All media profiles must be imported before importing Quick Sets. In RIP-Queue select the printer and click *Configure Printer*. Under the *Quick Set* tab, click *Import*. Select an ONT file and click *Open*. Repeat this process for each Quick Set.

Restore Custom Spot Colors: Importing spot colors is done by clicking on *Setup > RIP Configuration > Color Matching Table*. Select the *User Defined Colors* tab and click *Import*. Select the .tab file and click *Open*. Custom spot colors are imported.

Restore Buffered Jobs: Restoring buffered jobs only works if the version of the ONYX software and installed location are the same and the media profiles are imported. Close down RIP-Queue. Go to the Onyx12\Work\ or Thrive12\Work folder. Place the buffered job files into their respective printer folder. Relaunch RIP-Queue and the jobs will be listed.

Restore Cut Jobs: Cut files are restored by copying the backup folders into the Onyx12\Cutter\ or Thrive12\Cutter\ folder. The jobs will show up in CUT-Server.

Restore Color Templates: Restore custom color management settings by copying the .ccx files into the Onyx12\Templates\ or Thrive12\Templates\ folder. When RIP-Queue relaunches the color management settings will be available to select.