




Release Notes

Version 25

This is an interactive landing page! Click on any of the links below to take you to a new location. Click the return icon at the bottom of each page to navigate back here: 

New Features and Improvements

Layout Tool

Media Management

User Interface and Usability Improvements

Device Support and Compatibility

General Enhancements

Issue Resolutions

Cutter Specific Notes

ONYX 25.0.1 Update – Maintenance Release

ONYX 25.0.2 Update – Maintenance Release

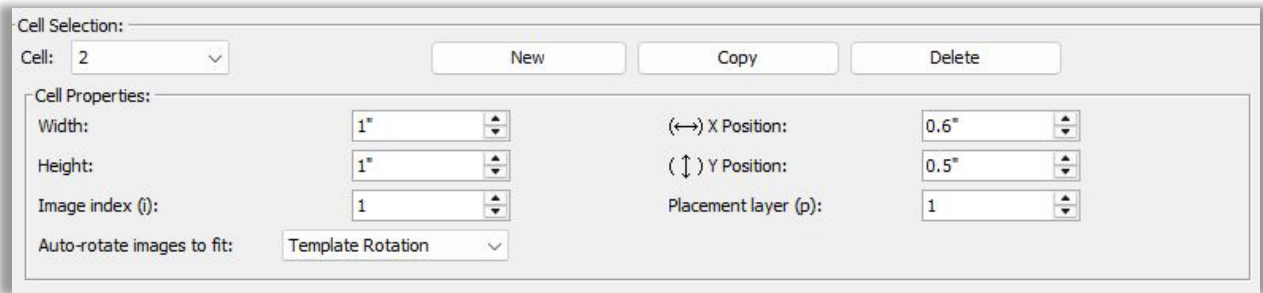
ONYX 25.0.3 Update – Maintenance Release

ONYX 25.0.4 Update – Maintenance Release

Layout Tool

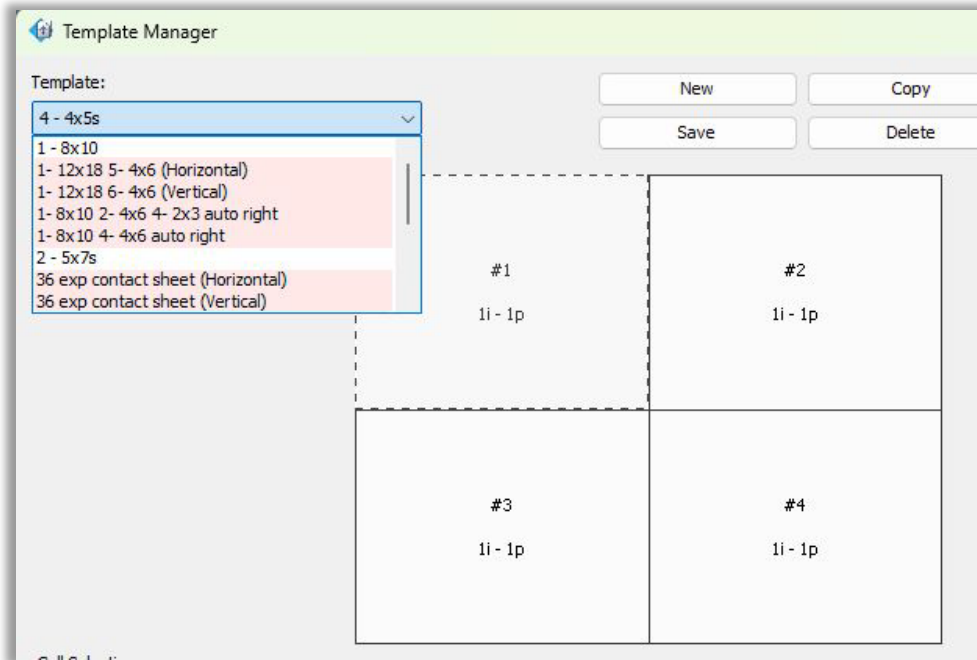
Layout Tool Template Multi-Image Support

Layout Tool's Template Manager can now work with a set of images instead of just a single image. Cells in a template now have an image index associated with them. The image index is used when multiple images are applied to a template.



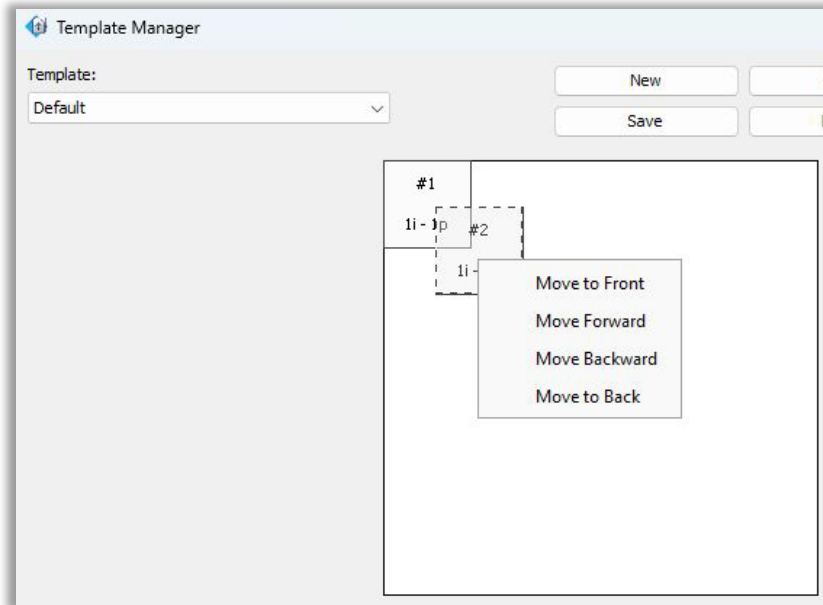
Create Additional Multi-Image Templates Presets

Pre-built multi-image presets have been added to the Layout Tool's Template Manager.



Add Z-Order Support for Overlapping Template Cells

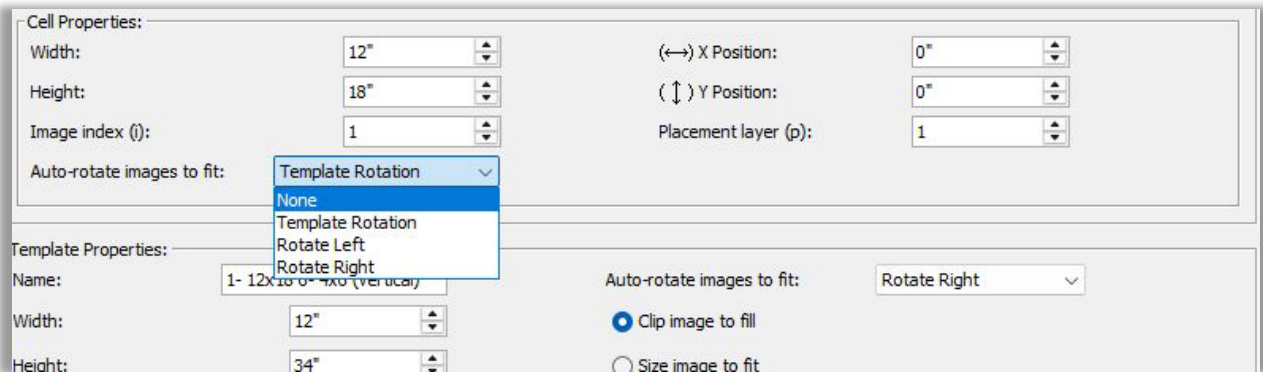
Cells in Layout Tool's Template Manager can be placed on top of other cells. Previously, the z-order of cells was based on creation order. Now cells can be moved in front of or behind other cells as needed.



Set Rotation Direction for Template Cells

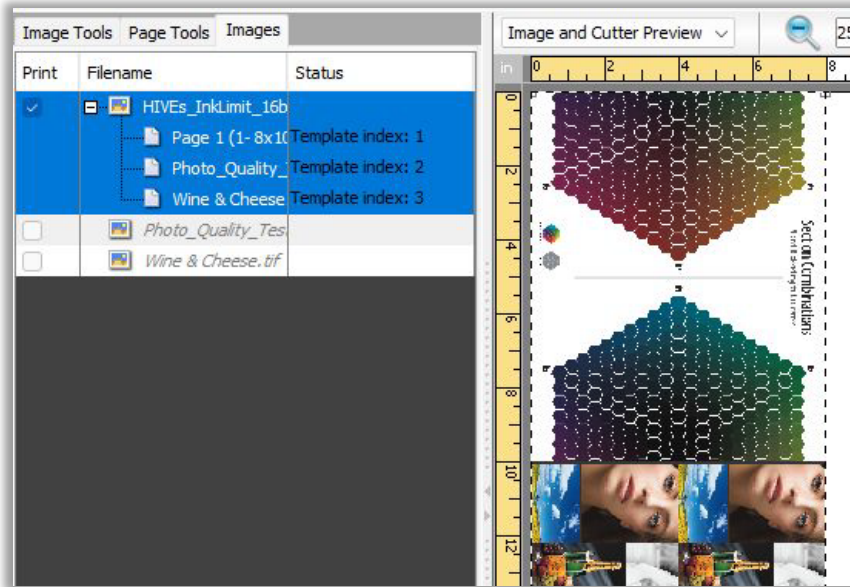
The rotation direction of cells in Layout Tool's Template Manager can be specified as a template setting or on individual cells. Possible auto-rotation values are:

- None
- Template Rotation (use whatever is set on the template)
- Rotate Left
- Rotate Right



Group Template Images

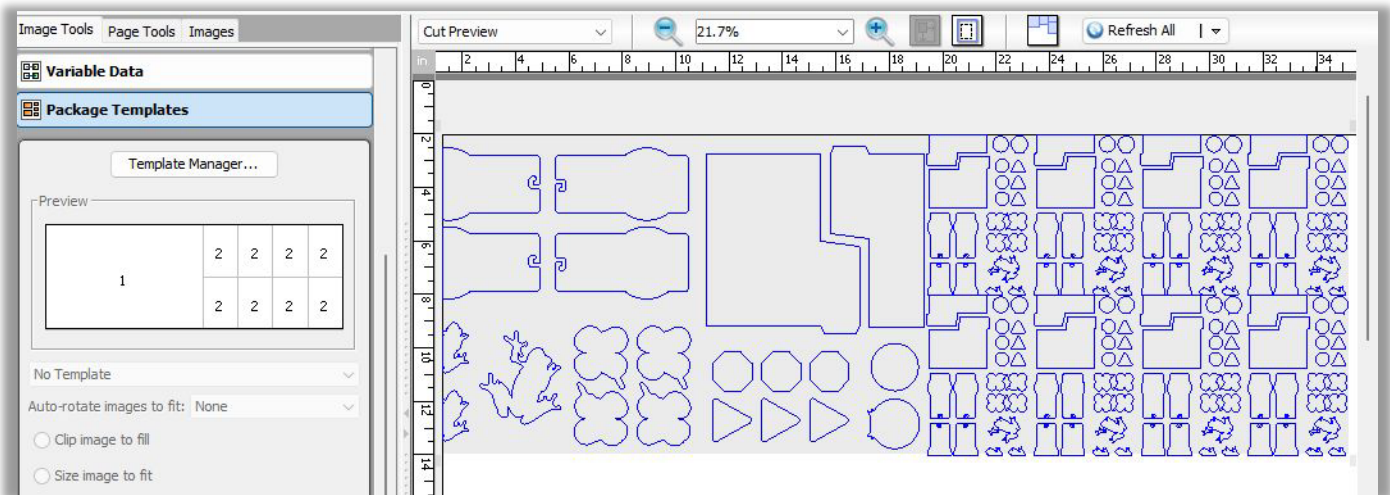
Multiple images that are part of the same template are now grouped together on the Images tab in Layout. This makes it easy to see which images belong to each nested template.



Cut-Path Support

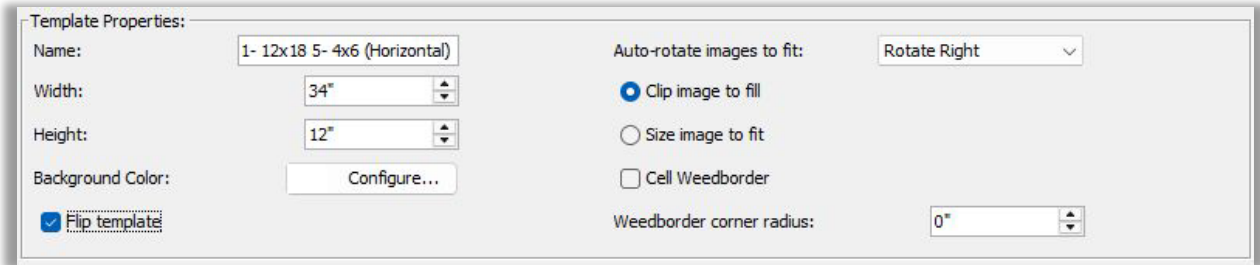
Cut paths are now supported in Layout Tool templates. The following are supported:

- Cut paths that are part of the image
- Weed border can outline all or individual cells



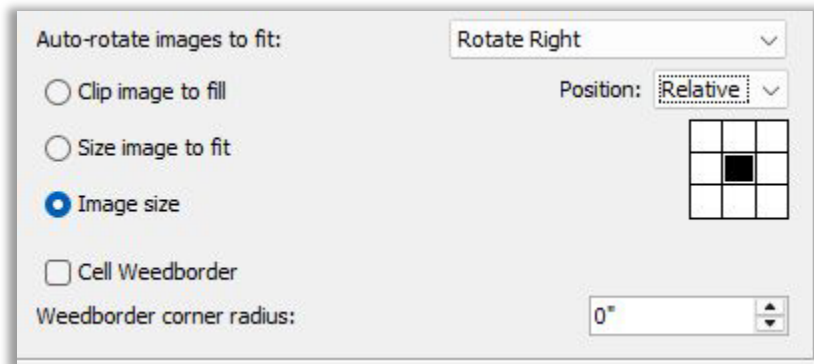
Multi-Sided Printing Support

An option has been added to the Layout Tool Template Manager to be able to flip a template. This is used when doing multi-sided prints.



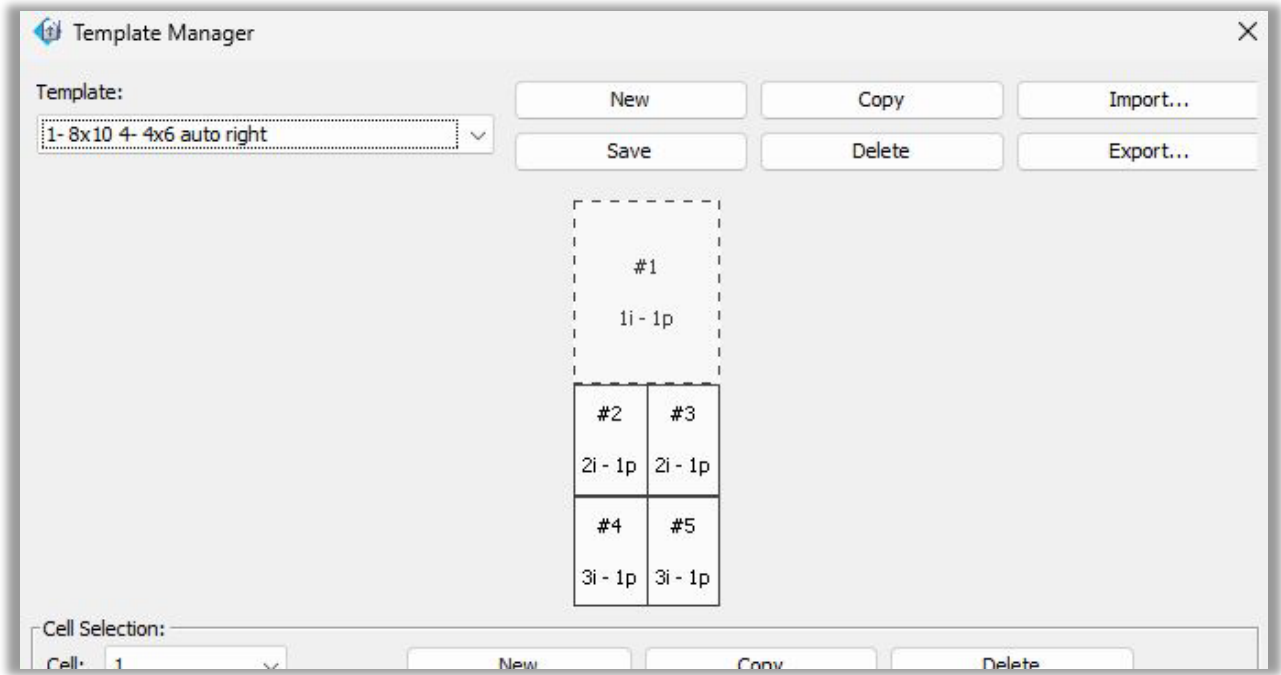
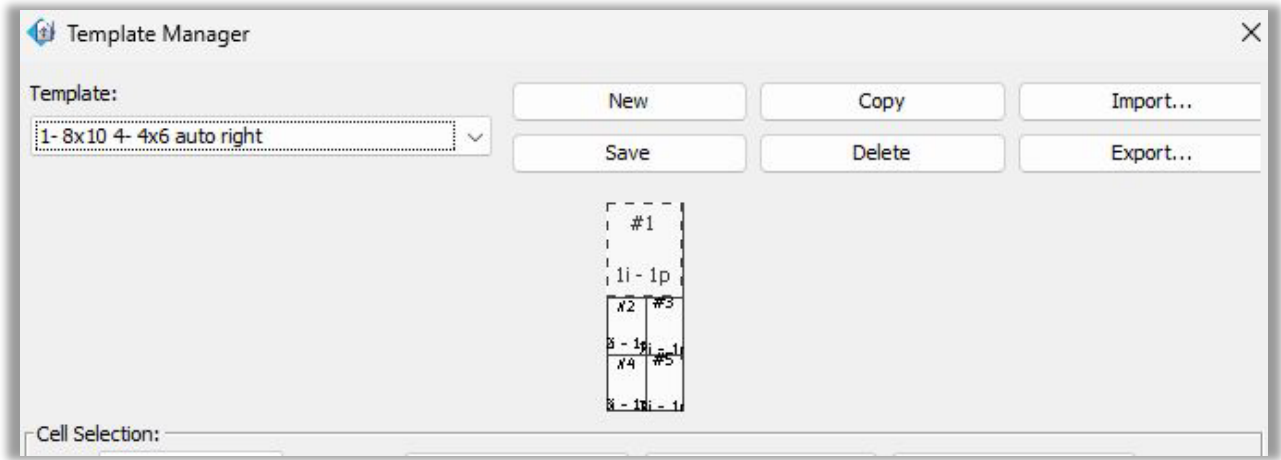
Position Offsets and Image Size

In the Layout Tool Template Manager, absolute and relative positioning of the image in a cell can be specified. For absolute positioning, the x- and y- coordinates can be set. For relative positioning, a grid is used to place the image in a corner, on a side or in the center of the cell.



Resizable Template Dialog

The Template Dialog in Layout Tool is now resizable. Previously, this dialog didn't scale and it was hard to use with some screen resolutions, particularly on 4k displays.



General Layout Tool Updates

Support for Output Files Larger Than 4GB When Submitting to RIP-Queue

Layout now supports submitting output files larger than 4GB to RIP-Queue. Layout can now generate and submit large-format print jobs (e.g., 27GB or 65GB outputs) without truncation or corruption.

Improved Layout Startup Time with Mode-Enabled Printers

Optimized Layout startup performance when printers with mode data are installed, reducing delays during launch.

Multi-page PDF support

Second pages now correctly appear in RIP-Queue previews and prints.

Improved performance when creating large multi-image templates (e.g., 10-up 18x24 yard signs)

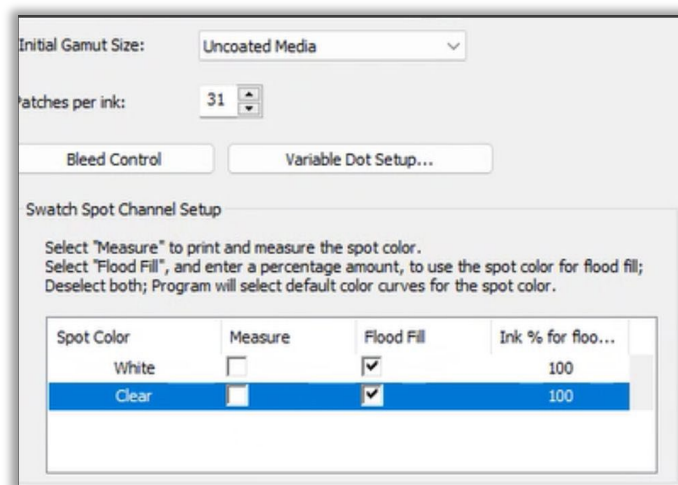
Resolved freezing in Layout when importing multi-page PDFs with high CPU usage.

2-page PDF images could not be used in templates.

Media Management

Default Flood Fill in Swatch Spot Channel Setup

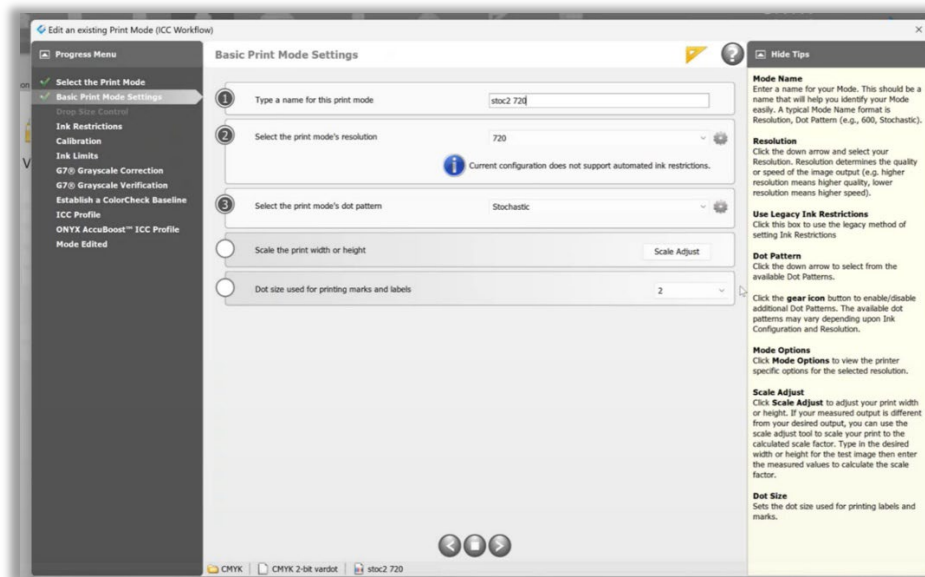
Flood Fill is now checked by default in the Swatch Spot Channel Setup dialog in Media Manager, making it easier for users to use Flood Fill instead of Measure.



Adjust Ink Usage for Labels and Cutter Marks

A UI feature has been added to Media Manager to control the variable dot level of labels and marks for print modes.

- Mark Label values now start at **1**, representing the smallest dot size, with higher values indicating larger dots—making the scale more intuitive.
- Mark Label values now **persist correctly** when saving and re-editing a mode.
- A **“Create Mode”** button is shown next to the Mark Label dropdown if the mode hasn’t been created yet, along with a message explaining that dot values can’t be set until the mode is created.
- Once the mode is created, the button and message are no longer shown, streamlining the UI.

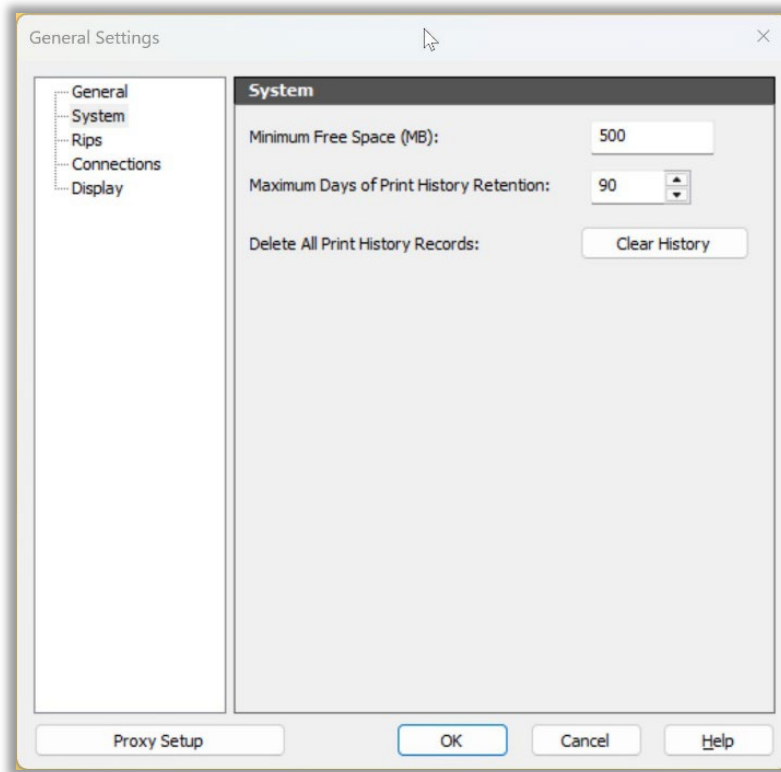


User Interface & Usability Improvements

Manual Deletion of Print History from RipQueue’s MongoDB

The print history in the RIP-Queue database is deleted automatically based on the print history retention the user has set up in General Settings. A button has been added to this dialog so that users can manually delete this history.





Increase Precision for Ink Usage

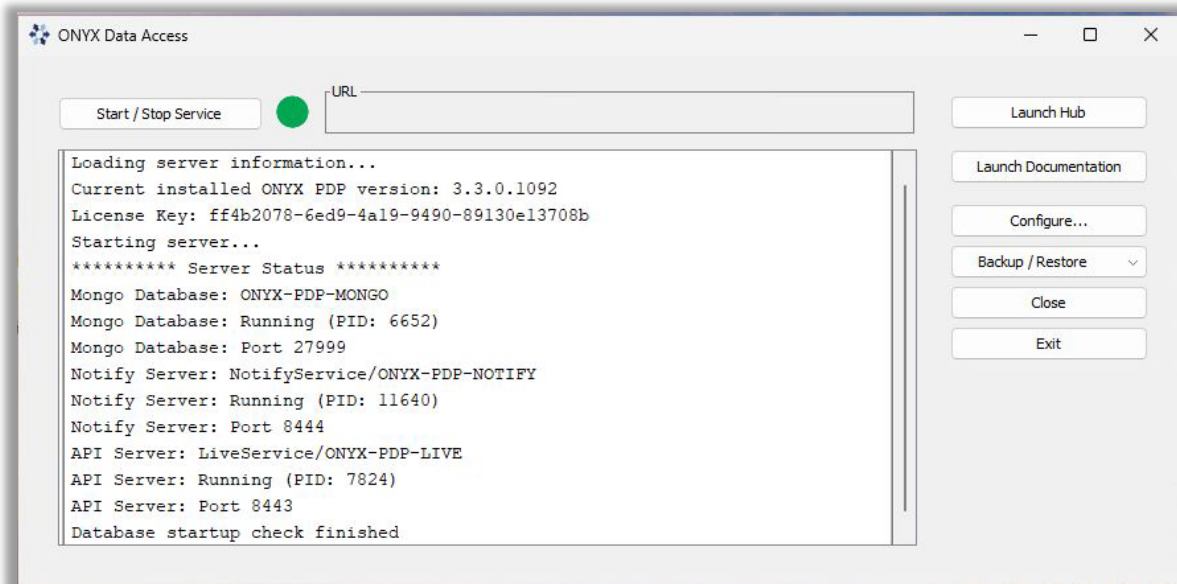
Previously, the ink usage column in RIP-Queue only displayed two digits of precision, even though the precision was set to a larger value in General Settings. Now, the ink usage column uses the precision value in General Settings.

Total Ink	Ink Use (milliliters)	Ink Coverage
5.701 ml	C: 0.211 M: 2.295 Y: 2.462 K: 0.733	144.97%

Added License Number to UI

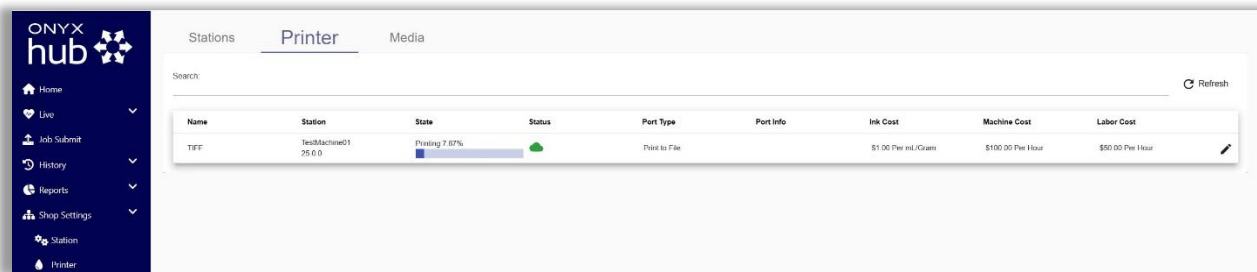
If a user has only installed PDP and not Thrive there was not an easy way to view the license being used for PDP within PDP. The current license being used is now displayed in the Data Access UI.





HUB Front -End: Add Printer States to Live View

The Hub UI stations and printer pages shows current printer state information.

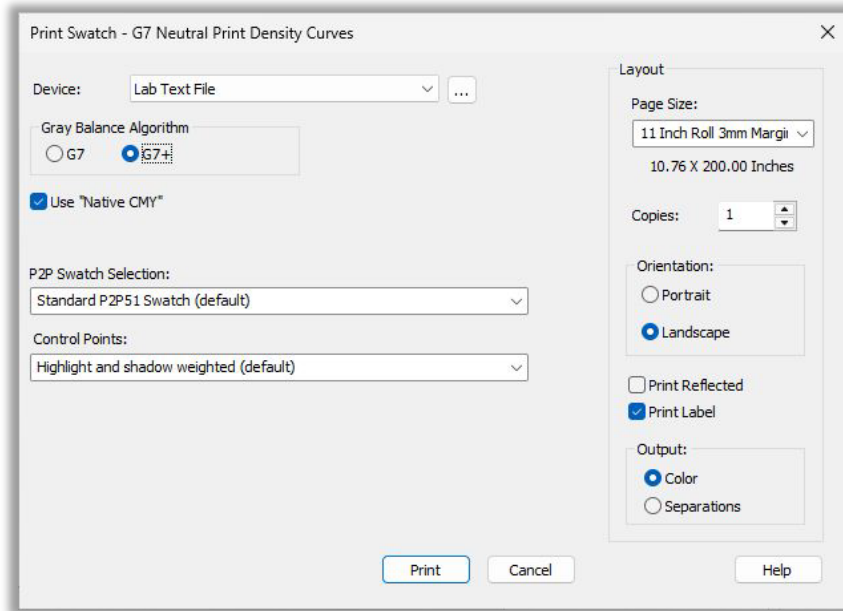


Device Support & Compatibility

Add G7+ Option for G7 Calibration

The PRINTING United Alliance (formally IDEAlliance) has begun to roll out G7+ calibration as an alternative to G7 calibration. It potentially works better for lower dynamic range (a.k.a. newspaper / textile) output situations. A version of the G7+ spec has been made available (though possibly still in flux). G7+ is now an option for building G7 correction curves in G7 profiles and linearization.





Epson SD-10 Color Device

Support has been added for the Epson SD-10 color device.

To ensure seamless integration of the Epson SD-10 color device with ONYX software, the following requirements must be met:

1. Port Account

- A port account is necessary for the SD-10 to function correctly within the ONYX environment.

2. Network Access

- The SD-10 may require access to an Epson printer on your network. This is essential even if you are profiling a different printer.

Barbieri Spectro LFP qb Digital Press Edition

Support has been added for the Barbieri Spectro LFP qb Digital Press edition.

General Enhancements

Incorporate Latest DemolccMAX IccProfLib Changes

Changes have been made to the DemolccMAX IccProfLib and enhancements have been incorporated into the Onyx ICC library:

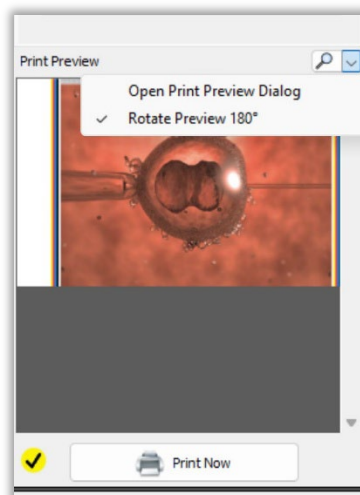


- Support for lccMAX version v5.1
 - lccMAX 5.1 contains fixes and performance improvements.
- Threading fixes
- CMM application refactor for improved performance
- Bug fixes and code cleanup including security updates

Various Print Nest Preview Updates

Improvements have been made to the RIP-Queue print nest preview:

- Correct colors are used for drawing cutter marks (instead of always using black).
- More accurate (color managed) colors are used for drawing gutter marks.
- Some actions that previously were buttons have been moved into a pop-up menu.
- Check box added to the "Rotate Preview 180°" menu item to make it easy to know the if the preview has been rotated or not.



Update icon colors for all products

Historically, the three main product types (Production House, Thrive and Go) had their own color theme that extended to the product executables and toolbar icons. This has been changed so that they all share the same icons (the blue version that was used by Thrive).

Product names, splash screens and product logos will continue to be specific to the product.



Issue Resolutions

Cut Path & Label

Label Outline Cut Path Issue with Autorotate

Resolved issue where label outline cut path was incorrect when using auto-rotate on non-square resolutions.

Cut File Issue with Non-Square Resolution and Bleed

Fixed incorrect cut file generation when using bleed and auto-rotate on non-square resolutions.

V24 Cut File Issue on Multi-Sheet Jobs

Addressed issue where cut files were not generated for all sheets in multi-sheet jobs.

Line on Edge of Image with Manual Crop Marks

Resolved issue where a line appeared on the edge of an image when manual crop marks were added.

Print and Image Processing

Distorted Prints with HP Latex 800W

Fixed distortion issues when printing raster images on HP Latex 800W.

Print Label Color Issues

Corrected color issues in print labels, ensuring consistent output.

Job Editor Rotate Issue

Resolved issue where rotation settings were not honored in Job Editor.

IT8 Patches Printing Issue

Fixed issue where IT8.7 ICC swatches were printed instead of selected ICC swatch formats.

Color Issues with Previous Job Settings in Job Editor

Ensured accurate color application when using settings from previous jobs in Job Editor.

Gradient Interpretation Issue with Mimaki TS330-1600

Addressed gradient interpretation issues, ensuring correct color output.

Files Wider than Roll Crash Issue

Fixed crash issue when opening jobs wider than the printer width on Finnish OS.



Media Manager and RIP-Queue

Fixed Printer Selection Reset After Refresh in PrinterConfig

The selected printer is now correctly reselected after accessing settings like General Settings, Manage Printers, or restarting the server. Previously, the selection would reset to the top printer in the list after a refresh.

Improved TIFF Rotation Performance

Resolved slowness when rotating TIFF files by 180°—rotation now completes significantly faster, addressing performance rates.

Fixed Incorrect Status Icon for On-Hold Jobs in RIP-Queue

Jobs placed on hold now consistently display the correct Hold icon and status text, even after media changes. Jobs that are both on hold and waiting for media now correctly show the Hold status.

Fixed Barcode Column Import in Variable Data

Resolved an issue where CSV files failed to import data into columns set to Barcode in the Variable Data tool. Barcode data now imports correctly alongside text and image columns.

SwatchBooks Settings Deletion Issue

Fixed issue where SwatchBooks settings were deleted from Mongo when RIP-Queue started.

Redo Strip Issue in Media Manager

Resolved issue where Media Manager crashed when "Redo Strip" was clicked before reading a strip.

Increase Precision for Ink Usage

Enhanced ink usage column to display more digits after the decimal for better accuracy.

Quickset Sizing Rule Ignored

Ensured Quickset sizing rules are applied correctly in RIP-Queue.

Reduce Size to Fit Page Issue with Bleed

Fixed issue where prints were cropped incorrectly when using "Reduce Size to Fit Page" with bleed.

Improved Handling of Job Settings in Echo/ONYX 24 Multilayer Jobs

When creating a multilayer job using Echo/ONYX 24, job printer settings are now consistently copied from the first job in the list

Resolved Error When Deleting Printers in PrinterConfig Tool

Fixed an issue where deleting a printer (except the most recently installed or the top-listed one) triggered a misleading "unable to open file for write" error.



Special Media Names Hidden in Job Properties for Ink Restriction Swatches

Temporary media names used for ink restriction swatches are no longer shown in Job Properties for other jobs. Media selection is disabled when editing swatch jobs to prevent invalid changes. Clicking OK without edits preserves the special media and avoids re-ripping.

"Compare with print mode defined colors (when set)" is unchecked by default

Fixed Cut Path Preview Issue in Multipage PDFs

Resolved a bug where cut paths from all pages in a multipage PDF appeared on every page in Layout preview. Now, only the correct cut data for each individual page is shown.

Fixed Missing Cutlines for Multipage PDFs with Trim Box and Individual Job Submission

Resolved an issue where only the first page of a multipage PDF received a cutline when using both "Add PDF Trim Box to Cut Paths" and "Submit pages as individual jobs" in a Quick Set. All pages now correctly receive their respective cutlines.

CMYKOR, CMYKORB and CMYKORG are available in the ICC swatch print dialog.

Fixed Incorrect Scaling on Rotated Jobs in RIP-Queue

Resolved an issue where scaling was applied to the wrong dimension when adjusting rotated jobs in RIP-Queue. Scaling now correctly affects the intended side, even when the job is rotated.

AccuBoost profile builds now complete without errors.

Media copy and rename dialogs now pre-populate names for easier editing.

ColorCheck patch editing dialog now displays correctly when editing named colors.

Legacy media profiles from earlier versions now import and RIP correctly.

Job Editor

Fixed preview corruption for non-interlaced PNGs in Job Editor

Resolved an issue where applying a spot using the Spot Layer Tool to non-interlaced PNG files caused the preview to appear corrupted, although the print output remained unaffected.

Installation and Licensing

Installation Issue with French OS

Resolved installation crash issue on French OS.

Network License Activation Errors

Addressed various error messages occurring during network license activation.

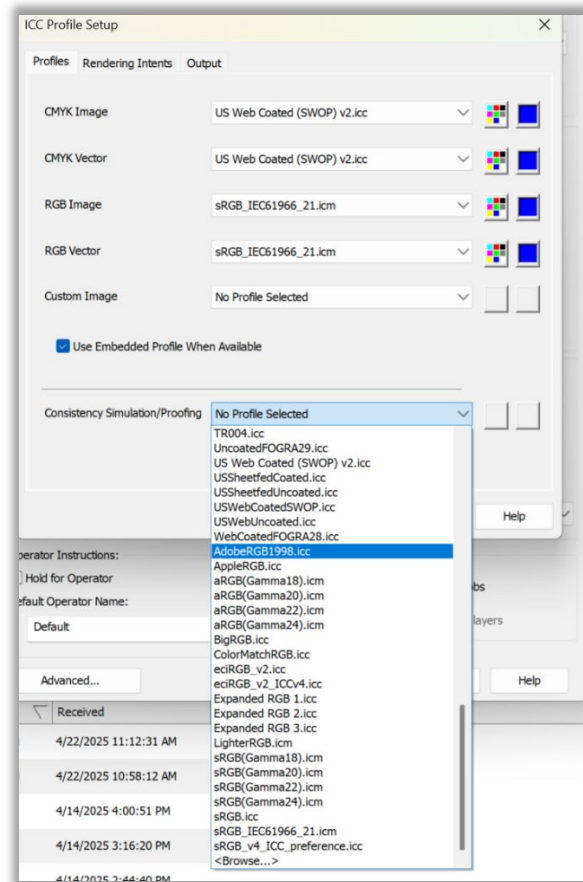
Enfocus Switch Port Configuration

Enabled changing the port for Enfocus Switch, improving flexibility and compatibility.



Add RGB Profiles for Simulation/Proofing

PDF documents can specify the color space for transparency blending, either CMYK or RGB. When the color space is RGB, it's recommended to use an RGB profile for accurate simulation. This allows for easy use of RGB profiles for simulation and proofing, especially for PDF files with complex transparencies designed for web browsers.



Cutter Device Additions, Updates & Fixes

Note: All cutter device fixes from Onyx 24.0.3 that were previously supplemented by cutter patches are included with this release

ONYX (All Cutters)

Updated cutter previews to show the active mark color (All Cutters)

Cut path accuracy improved for PDFs with mixed page sizes.

Grommet placement now aligns correctly when using “Reflect at Print Time.”

AOL CUTTER

Renamed "Jinan Aolei" to "AOL Cutter"

COLEX

SharpCut Pro

Added side label option when selecting the Left/Right only workflow

Correction for invalid print/cut condition with numerous mark options selected.

EUROSYSTEMS:

OptiScout 2

Optimized QR code distance when positional mark option is enabled

GCC

GCC Cutters

Implemented GCC Postnet barcode

GRANDO

Grando 6090 Cutter

NEW: Grando 6090 driver addition

GRAPHTEC

CE8000 Cutter

NEW: Graphtec CE8000 driver

Implemented dynamic Graphtec start mark search functionality

Added Color Undermark User functionality

Optimizations for Color Undermark generation for mark area, pixel perfect if unselected



FC9000/CE7000 Cutter

General registration mark placement optimizations

Corrected vertical mark behavior

Optimized Color Undermark surrounding space requirements

Corrected UI issues when enabling undermarks with standard barcode

Adjusted spinner limits if undermark is selected

Corrected mark underprint generation for directional marks when enabled

Corrected registration mark commands when cutting a job out of Layout Tool

Roll Media label no longer overlaps the quiet zone on Code 39 barcode

FC8600

Corrected registration mark commands when cutting a job out of Layout Tool

FCX Series

Added Color Undermark User functionality

Optimized Mark Margin Behavior to match the ONYX standard barcode implementation

Corrected generation of Undermark print area when directional marks are not enabled

HP

Latex Plus Cutter

Changed active port communication to stay open for duration of application uptime

Added Color Undermark Functionality

Correction for Color Undermark when directional marks are enabled

Latex Cutter

Changed active port communication to stay open for duration of application uptime

Added Color Undermark Functionality

Correction for Color Undermark when directional marks are enabled

HP Latex R530 & HP Latex 730/830

Included drivers on our P&PDM for version 25 and previous versions.

JINGWEI

Jingwei Cutter

Corrections for QR code name mismatch



KEUNDO

KUENDO 6090 Cutter

NEW: KEUNDO 6090 Driver addition

MIMAKI

Mimaki CJV200 Cutter

NEW: Mimaki CJV200 Driver addition

Mimaki CFX Cutter

NEW: Mimaki CFX Driver addition

ID Cut Series

Cut Layer options added to CUT-Server

MUTOH

Mutoh XpertJet C641SR Pro Device

NEW: Mutoh XpertJet C641SR Pro driver addition

Corrections for mark size and mark margin values

Adjustments for horizontal print resolutions

ORIC

ORIC 6090 Cutter

NEW: ORIC 6090 driver addition

SUMMA

F-Series

Added Color Undermark Functionality

Optimizations for Color Undermark generation

Removed extra registration marks in cut file output

Removed extra registration marks when barcode placement is set to left and right

SGP output not always producing correct filetype

S3 Series

Changed active port communication to stay open for duration of application uptime

Added Color Undermark Functionality



Optimizations for alignment precision with numerous intermediate registration marks

Corrections for cut path operation inaccuracy when cutter marks size was increased

Fixed SummaUSB port configuration settings calls

Fixed Velocity and Pressure settings that were not overriding device settings

S One

Changed active port communication to stay open for duration of application uptime

Added Color Undermark Functionality

Fixed SummaUSB port configuration settings calls

Fixed Velocity and Pressure settings that were not overriding device settings

S2 Series

Changed active port communication to stay open for duration of application uptime

Added Color Undermark Functionality

Fixed SummaUSB port configuration settings calls

Fixed Velocity and Pressure settings that were not overriding device settings

S Series

Changed active port communication to stay open for duration of application uptime

Added Color Undermark Functionality

Fixed SummaUSB port configuration settings calls

Fixed Velocity and Pressure settings that were not overriding device settings

VALIANI

Added missing text in Layout Tool settings

VICUT

VICUT VFC90 Cutter

NEW: VICUT VFC90 driver addition

Optimizations for free mark size checks

Corrections for reference mark rotation alignments

ZUND

Implemented ZCC Version Compatibility dropdown (available in 24.0.3!)



Adjustments for more robust ZCC version selection parameters

Optimization of positioning marks for all placement workflows

Placement updates for side barcode selection when nesting

Re-implemented "Large Barcode" option

Re-implemented "Swap Top and Bottom Barcode and Marks" option

Added option for RIP hot folder workflow

Added user ability for cut path rotations

Added ability for driver to produce job bitmap or not

Corrections for QR Code settings to enable adjusted print output

Optimizations for Direct Cut workflows with latest releases of ZCC 4.5/3.5

Correction for ZCC Version Compatibility with latest release 3.5.4

Addressed cut file memory leak issues

Optimizations for cut job preview

Corrections for Memory leak conditions

Corrections for Color Undermark spacing when using Code 39 barcodes

Corrections for Color Undermark placement for position

Addressed combination case: no barcode with left/right placement and mark underprint

Corrections for generating valid output when using Dutch locale



Maintenance Releases

Note: Maintenance releases are minor point releases that address specific issues identified by our users. These fixes are crucial for improving the performance and reliability of our software. The issues selected align with our point release process and will enhance the end-user experience. We greatly appreciate the feedback from our users that helped us identify and resolve these issues!

A Maintenance Release version, such as 25.0.1, will update an existing 25.0.0 installation. If installed on a new system or on one that does not already have 25.0.0 installed, it will create a new ONYX 25 directory.

ONYX 25.0.1 Update

Updates

- Improvements in G7 iteration workflow
 - Enables print providers to achieve G7 standards with higher efficiency and accuracy.
- Improvement in Best Fit Allow Rotate algorithm
 - Enhanced rotation logic optimizes media utilization and job placement, reducing waste and improving throughput
- Updated Java libraries to address known Security Vulnerabilities
 - Upgraded Java components strengthen platform stability and protect against known exploits

Resolved issues

- Rip-Queue: May experience a lockup after several jobs have been processed
- RIP-Queue: Label preview draws correctly when background color is set to None
- RIP-Queue: Ability to edit Custom Color, Bleed Options in Job Properties
- RIP-Queue: Jobs for Canon PRISMAguide maintain the Batch_support ID
- RIP-Queue: Print with custom bleed when printing raster images
- RIP-Queue: improved network file transfer process for cut files sent from RIP-Queue to Cut-Server
- Media Manager: Edit or modify linearization for profiles created before version 25
- Media Manager: Edit or modify Ink Restrictions tables for profiles created before v25
- ColorCheck would not validate certain input profiles for printing G7 or Standards verification swatches
- Gamut Report displayed larger delta values when compared to v24
- Relative Colorimetric + BPC and DeviceLink produce lighter than expected colors

- Cutter registration marks output is consistent with the label mark color when changed from black in Media Manager
- Automatic label cut path generation is consistent when the print label is placed above the image
- Swatch Books "Add Print Mode Color" adds expected colors when the media has multibyte characters
- Corrupt UTF8 characters in License Manager Application
- KalaXY trimmer: Print with left or right justification settings without print errors
- Multi-Page PDF: Designed cut paths are included on all pages after page 2
- Layout Tool: UI may hang when zooming with certain cutter selections
- Profiling Viewing of Swatch Measurements is not available in the Italian language
- Swatch Books generate consistent color swatches when selecting device colors as the source input
- RGB Contone devices: Printing a PDF image without an ICC will preview and print as expected
- Physical Print Records get updated consistently when printing to supported devices

Cutter Changes

- Summa: Corrections for .PLT file operations by removing lock on file
- Graphtec: Added support for Cross-Cut functions with Roll Server operations.
- Roland: Removed Roland GR cutter support
- All: Optimizations for Cutter Mark dialogs for all devices.



ONYX 25.0.2 Update

Improvements

- Printer Installation Process
 - Added a method to allow printer driver installations to proceed even when connectivity to the online server fails, ensuring uninterrupted setup in offline scenarios.
- Database Stability
 - Enhanced MongoDB startup process to ensure consistent and reliable database initialization.
- Stacked Cut Layers
 - Now recognizes multiple cut layers or styles when multiple paths are stacked in the original design application.

Resolved issues

- Multi-page documents: All pages can now be rotated independently when submitted separately from the Job Editor, reducing media waste.
- Media Manager: Added the ability to add a Nix color device while in Media Manager.
- Fotoba XLA Workflow: Enhanced notch placement and automated barcode scanning.
 - The recommended workflow is to use the 'All Rows' Barcode setting.
- X/Y Trimmers: Improved media usage and alignment for multiple copies and rows when using right justification (including Fotoba and Kala devices).
- Grommet Marks: Placement of grommets on an image remains consistent with Best Fit and Auto Rotation strategies.
- JDF Workflow: Added the ability to edit color settings when jobs are submitted automatically via JDF workflow.
- Cut Layer Settings: Customized cut layer settings now persist in Cut-Server and Layout Tool after application restart.
- Installation Warning: Modified installation warning to align with current minimum system requirements.
- Cut job Filtering: UI Settings and display for filtered Cut Jobs in CUT-Server, remain after an application restart



- Reflect at Print Time: When using the “Reflect at Print Time” placement option, Cut Paths will not be affected.
 - Note: This option is intended primarily for dye sublimation workflows where cutting occurs after transfer.

Cutter Changes and Resolved Issues

GCC:

- GCC Cutter Job settings are now applied correctly

GRAPHTEC:

- Graphtec Data Link Server “Cut Now” rotational optimizations

HP:

- Optimized intermediate mark spacing for long cut jobs

MIMAKI:

- Addition: Mimaki Layer tool support within Cut-Server

MUTOH:

- Updated Mutoh ValueCut Default Behavior

PROTEK:

- Fix: Protek Cutter fails at print time when using minimum Y Image margins

ROLAND:

- Roland GR2 Cutter Job settings are now applied correctly

SUMMA:

- Optimized intermediate mark spacing for long cut jobs
- Corrected Summa S3/S One intermediate marks offset values
- Summa S3 Cutter UI will now show the saved OPOS value

ZUND:

- Zund Cut Center - Resolved console error when material match isn't set up
- Zund Cut Center – stability improvement when selecting four side Code 39 barcodes



ONYX 25.0.3 Update

- Resolved issue with missing USB DLL Files in version 25.0.2 required for connecting various cutters via USB.

ONYX 25.0.4 Update

- **Resource Management Enhancements:** This release includes targeted improvements to memory and resource handling, ensuring greater stability and more efficient performance over extended application sessions.

